

# 2021 DUNLOP® TIRE LINES



# THE ADVANTAGES OF DUNLOP®



## PERFORMANCE FOR THE JOURNEY, STYLE FOR THE ARRIVAL

Dunlop understands there are some drivers who value the arrival as much as the journey. That's why we make tires that deliver style with performance to match.

## WHAT DUNLOP MEANS TO YOU

Dunlop gives you an edge that can add up to more sales opportunities.

### A HERITAGE OF SUCCESS

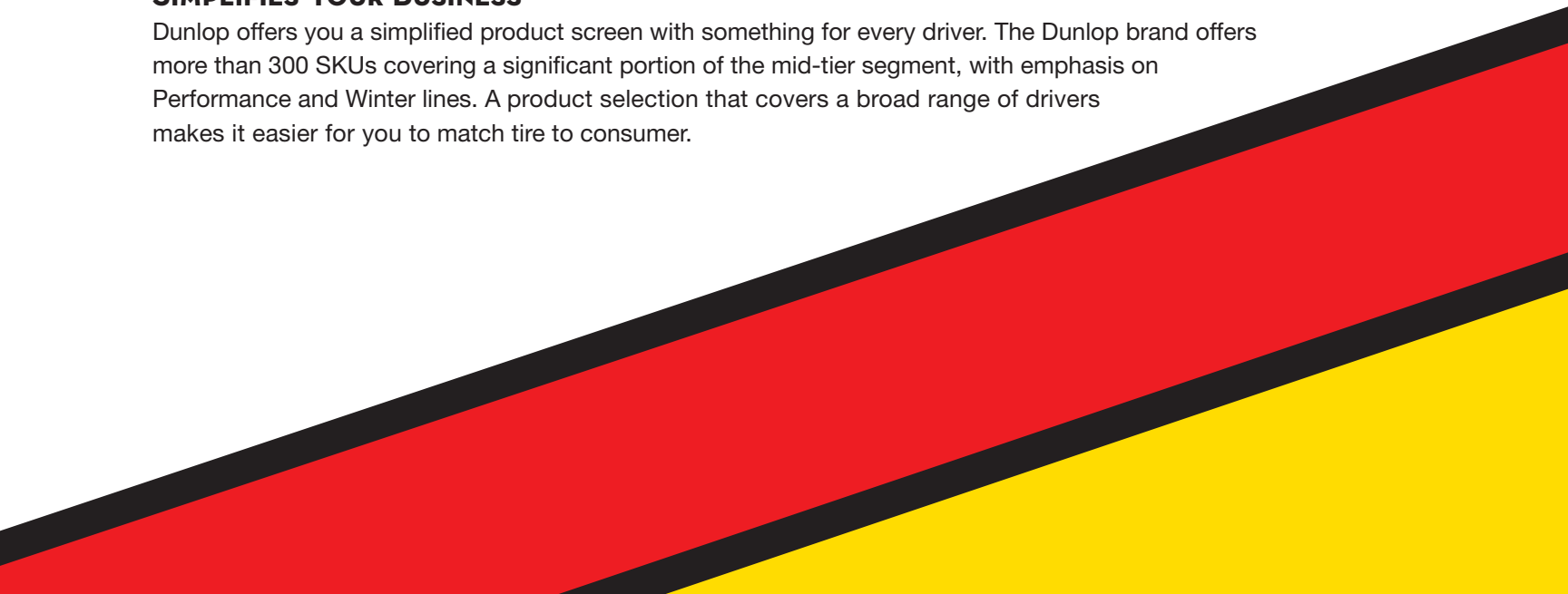
Dunlop is an established brand that has been thriving for more than 120 years. Thanks to greater brand acceptance, consumers are more likely to consider purchasing Dunlop tires than several other brands, which helps you close the sale.

### GENERATES SHOPPER TRAFFIC

Dunlop tires have been chosen as Original Equipment on many popular vehicles including Honda, Nissan and Toyota, along with premium brands like BMW and Mercedes-Benz. That means more consumers are likely to consider shopping at retailers that sell Dunlop tires, which means more traffic in your outlets.

### SIMPLIFIES YOUR BUSINESS

Dunlop offers you a simplified product screen with something for every driver. The Dunlop brand offers more than 300 SKUs covering a significant portion of the mid-tier segment, with emphasis on Performance and Winter lines. A product selection that covers a broad range of drivers makes it easier for you to match tire to consumer.



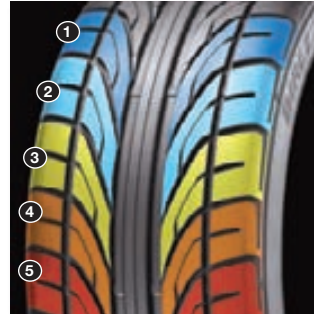
## 4D SIPE SYSTEM



An increased number of sipes across the tire spectrum help provide extra traction during winter conditions. With self-interlocking and transversal sipes, the 4D Sipe System was specifically designed to enhance snow-handling performance.

Key line: SP Winter Sport 3D®

## 5-PITCH TECHNOLOGY™



5-Pitch Technology counterbalances vehicle disturbance while minimizing road and pass-by noise. Five different block sizes create various frequencies to help break up sound waves, so drivers can enjoy a quiet ride.

Key line: Direzza® DZ102

## ACTIVE TRACTION SIPE SYSTEM™

Dunlop's cutting-edge Active Traction Sipe System is key to the ability of the SP Winter Sport 3D® to maintain optimum performance as driving conditions change. This integrated design consists of three unique types of sipes positioned throughout the treadface. Together, they help pull, grip and enhance traction to help provide high-performance cornering and handling in icy, snowy, wet and dry driving conditions.

### Unparalleled Pulling Power



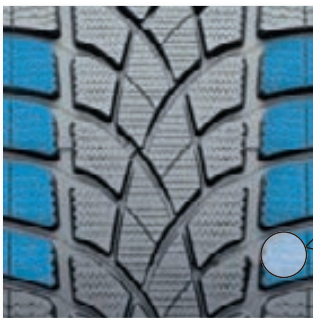
The center-block sipes help "pull," which results in superior traction and braking on ice and snow.

### Confident Stability



High-amplitude sipes enhance lateral stability for confident handling in wet and slushy conditions.

### 3D Grip



At low speeds, the 3D shoulder sipes are open and flexible to help provide "biting" edges for strong grip in winter driving conditions.



In dry conditions, the 3D sipes lock together to help provide a solid, stable surface for superb dry handling.

Key line: SP Winter Sport 3D®

### DIMENSIONALLY STABLE POLYESTER™



To help maintain uniformity, toughness and a smooth, comfortable ride, Dimensionally Stable Polyester ply material goes through a special manufacturing process to pre-cure and pre-stretch the ply cords.

Key line: Grandtrek® AT20

### JOINTLESS BAND TECHNOLOGY™



Jointless Band Technology helps maintain the tire's shape at highway speeds. With fabric positioned in all the right places to enhance handling and treadwear, this continuous spiral ply serves to help reduce vibration.

Key line: SP Sport Maxx® GT

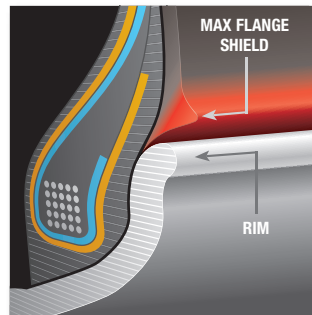
### RUN ON FLAT® AND DUNLOP SELF-SUPPORTING TECHNOLOGY®



Dunlop Self-Supporting Technology incorporates special reinforcements into the tire sidewalls so that driving may continue for up to 50 miles at speeds up to 50 mph, even after a complete loss of air pressure. Refer to the run-flat owner's manual/limited warranty recommendations on operation at low or no air pressure. Tire pressure monitoring system required. Sold separately.

Key line: SP Sport Maxx® GT DSST

### MAX FLANGE SHIELD®



The Max Flange Shield is a firm rubber guard that extends beyond the rim and wraps around the lower sidewall of the tire to help protect rims from accidental curb damage.

Key line: SP Sport Maxx®

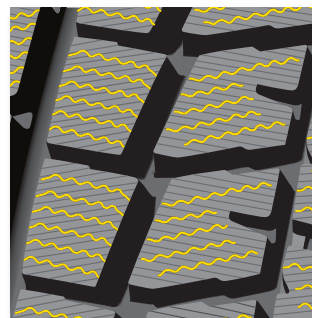
### EVAQUA GROOVES™



Angled Evaqua Grooves are situated to help efficiently evacuate water away from the footprint for responsive handling on wet roads.

Key line: Signature II

### MAXX SHARP EDGE WITH MIURA-ORI SIPES



Maxx Sharp Edge with Miura-Ori Sipes utilizes an inventive zigzag sipe pattern to maximize surface contact. Not only does this promote even wear, but it also helps prevent block distortion.

Key line: Winter Maxx® SJ8

# DUNLOP® TECHNOLOGIES DEFINED

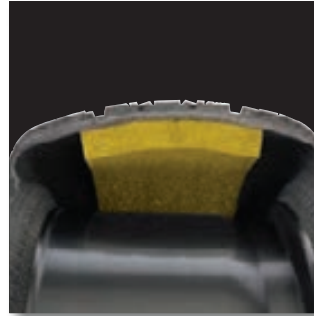
## MULTI-PITCH TREAD DESIGN TECHNOLOGY™



Multi-Pitch Tread Design Technology uses various sizes of tread blocks that produce specific sound frequencies calibrated to help cancel each other out, so drivers can enjoy a smooth, quiet ride.

Key line: Grandtrek Touring® A/S

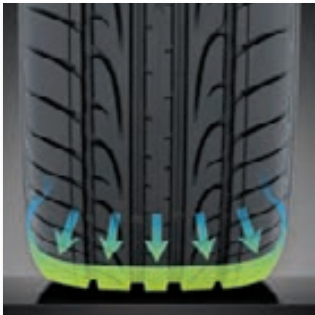
## NOISESHIELD TECHNOLOGY®



Polyurethane foam bonded to the tire's inner surface helps to reduce the level of interior vehicle noise, offering passengers a quieter, more comfortable ride.

Key line: Sport Maxx RT™

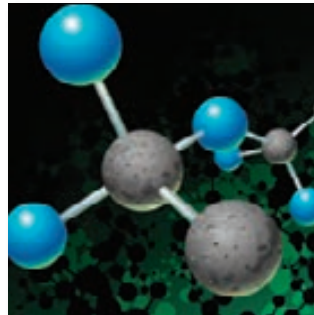
## MULTI-RADIUS TREAD TECHNOLOGY™



Innovative Multi-Radius Tread Technology distributes pressure evenly over the contact patch through all stages of cornering, for excellent dry traction and handling while enhancing wet performance.

Key line: SP Sport Maxx RT2

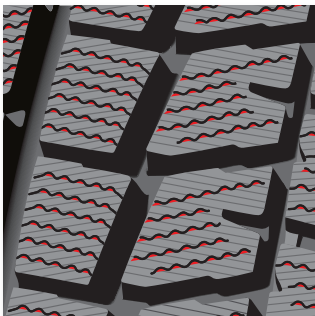
## SILICARBON MATRIX™



Made of silica and carbon black, the Silicarbon Matrix tread aids grip in both rain and dry weather.

Key line: Direzza® DZ102

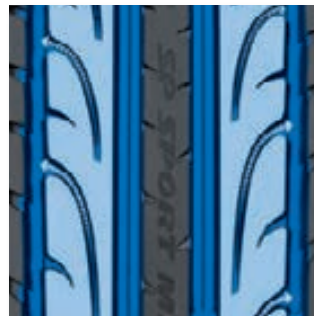
## NANO-FIT RUBBER



Nano-Fit Rubber is an innovative material that is both flexible and rigid. These distinctive properties help tire tread latch onto icy surfaces.

Key line: Winter Maxx® SJ8

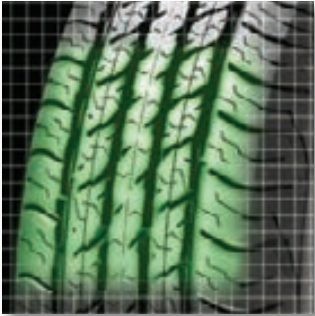
## TWIN HYDRO-PADDLE TECHNOLOGY™



Twin Hydro-Paddle Technology employs two tread regions to help efficiently evacuate water out from under the footprint for responsive handling on wet roads. There are no sipes in this tread design, which means quick, turbulence-free water dispersion.

Key line: SP Sport Maxx®

## VERSALOAD TECHNOLOGY™



By optimizing the tire mold for each tire size, VersaLoad Technology helps maximize the amount of the footprint that comes in contact with the road for consistent traction, handling, ride comfort and treadwear under various loading conditions.

Key line: Grandtrek® AT20

## V-SHAPED GROOVES AND DEEP SNOW NOTCHES



These uniquely shaped grooves help optimize winter performance, while the deep snow notches aid in increased snow traction.

Key line: SP Winter Sport 4D®

# DUNLOP 30-DAY PLEDGE

## 30 Days to Decide

The Dunlop 30-Day pledge gives your customers 30 days behind the wheel to determine if their Dunlop tires are the right fit for their driving style. If they aren't 100% satisfied, they can simply exchange their eligible tires for another set of Goodyear or Dunlop tires within 30 days of purchase. Certain limitations.

## Choose with Confidence

The Dunlop 30-Day Pledge will give your customers confidence in their tire purchase. If they are not fully satisfied with the performance of their eligible tires, the Retailer will remove and replace the tires and mount and balance the replacements at no cost to the customer. Certain conditions and limitations apply.\*

Creating confidence is a powerful way for you to close sales with customers who are having trouble making the purchase decision. Tell them about the Dunlop 30-Day Pledge so they can feel more comfortable about buying a set of tires. You'll help create more satisfied customers and add more tire sales to your bottom line.

## Eligible Tire Lines:

- Signature II
- Direzza® DZ102
- Signature HP
- Winter Maxx® 2
- Winter Maxx® SJ8



## Limitations and Requirements

- Tires must be returned undamaged. Tires that are damaged due to misuse, road hazards, mechanical problems related to the vehicle, use in any racing-related activities or competitive events, or tires that are removed from the original vehicle are excluded from this trial period and exchanges do not apply.
- If the exchange is for a more expensive tire, the customer pays the difference (including sales tax). Likewise, if the exchange is for a less expensive tire, the customer must be refunded the difference. Mounting and balancing are included.
- Exchanges are for another Dunlop tire.
- Only the tires originally purchased are covered. The replacement tires are not covered by the 30-Day Pledge.
- Customer must return to the location that sold the tires for the exchange.
- Customer must present the original sales receipt.

## Claim Processing Instructions for Dealers

- Mark the removal reason on the product adjustment claim form as "30-Day Pledge." If you use GBMS to input your adjustments, enter condition code GG followed by a space and "30-Day Pledge" for the tire condition.
- IMPORTANT: Record the date of the original tire purchase on the claim form.
- Return the tires to your designated Product Services Center with your next shipment of adjustment tires.
- For complete claim processing instructions, refer to 30-Day Trial Product Service Bulletin on Tire-HQ™.
- If you have questions, contact the Dunlop Customer Assistance Center at 1-800-321-2136 U.S., 1-800-387-3288 Canada.

\*This program can be changed, modified or canceled at any time at Goodyear's discretion without advance notice.

# PERFORMANCE



<b>SP Sport Maxx® GT</b>	<b>Sport Maxx RT2</b>	<b>Signature HP</b>	<b>SP Sport® 5000</b>	<b>SP Sport 7000 A/S®</b>
Outstanding Driver Feedback and Responsive Handling	A Champion in Grip and Steering Precision	Bold Styling Meets Experienced Handling for All-Season Performance	High-Performance All-Season Tires	All-Season High Performance and a Smooth, Quiet Ride



# PERFORMANCE TIRE SELECTOR CHART

	ALL-SEASON UHP			ALL-SEASON SPORT/TOURING			SUMMER UHP														
	Signature HP (Pg. 152)	SP Sport Maxx® A1 A/S SP Sport Maxx® A1-A A/S (Pg. 154)	SP Sport Maxx® A1 A/S DSST (Pg. 154)	SP Sport® 5000 SP Sport® 5000 NRT (Pg. 156)	SP Sport® 5000M (Pg. 156)	SP Sport® 5000 DSST® GTT SP Sport® 5000M DSST® CTT (Pg. 156)	SP Sport® 7000 A/S® (Pg. 158)	SP Sport® 7010 A/S DSST® (Pg. 159)	SP Sport Maxx® GT SP Sport Maxx® GT w/ NoiseShield Technology® (Pg. 160)	SP Sport Maxx® GT ROF (Pg. 160)	Sport Maxx RT2 Sport Maxx RT2 ROF Sport Maxx RT2 NST (Pg. 162)	Sport Maxx RT™ Sport Maxx RT™ w/ NoiseShield Technology® (Pg. 164)	Sport Maxx RT™ ROF (Pg. 164)	SP Sport Maxx® 050 SP Sport Maxx® 050 DSST™ CTT SP Sport Maxx® 050 DSST™ CTT w/ Noise Reduction Technology® (Pg. 166)	Direzza® DZ102 (Pg. 167)	Sport Maxx Race 2™ (Pg. 168)	SP Sport Maxx® (Pg. 170)	SP Sport Maxx® GT 600 SP Sport Maxx® GT 600 DSST® (Pg. 172)	SP Sport® 01 (Pg. 174)	SP Sport® 01 DSST® ROF (Pg. 174)	
195/50R15																					
195/55R15																					
P195/65R15																					
205/50R15																					
205/55R15																					
185/55R16							83H														
195/50R16																					
P195/55R16																					
195/60R16																					
205/45R16																					
205/50R16																					
205/55R16	91V																				
205/60R16	*92V																				
215/50R16																					
215/55R16																					
P215/60R16							94H														
225/50R16																					
225/55R16																					
205/45R17	88W										88W	88W									
205/50ZR17																					
205/50R17	*93V																				
215/45R17	91W																				
215/50R17																					
215/55R17																					
P215/55R17																					
225/45R17	*94W				91V					94W											
225/45ZR17																					
225/50R17	94W																				
P225/50RF17																					
P225/55R17																					
225/55R17	*97V																				
P225/60R17																					
235/45R17	94W										94W									94W	
235/45ZR17										97Y											
235/50ZR17																					
235/50R17	96V																				
235/55ZR17																					
235/55R17	99W																				
245/40R17	91W																				
245/40ZR17										95Y											
245/45R17	95W																				
P245/50ZR17																					
255/40R17																					
255/60R17																					

\*Discontinued in 2020

	ALL-SEASON UHP			ALL-SEASON SPORT/TOURING				SUMMER UHP												
	Signature HP (Pg. 152)	SP Sport Maxx® A1 A/S SP Sport Maxx® A1-A A/S (Pg. 154)	SP Sport Maxx® A1 A/S DSST (Pg. 154)	SP Sport® 5000 SP Sport® 5000 NRT (Pg. 156)	SP Sport® 5000M (Pg. 156)	SP Sport® 5000 DSST® CTT SP Sport® 5000M DSST® CTT (Pg. 156)	SP Sport® 7000 A/S® (Pg. 158)	SP Sport® 7010 A/S DSST™ (Pg. 159)	SP Sport Maxx® GT SP Sport Maxx® GT w/ NoiseShield Technology® (Pg. 160)	SP Sport Maxx® GT ROF (Pg. 160)	Sport Maxx RT2 Sport Maxx RT2 ROF Sport Maxx RT2 NST (Pg. 162)	Sport Maxx RT™ Sport Maxx RT™ w/ NoiseShield Technology® (Pg. 164)	Sport Maxx RT™ ROF (Pg. 164)	SP Sport Maxx® 060 SP Sport Maxx® 060 DSST® CTT SP Sport Maxx® 060 DSST® CTT w/ Noise Reduction Technology® (Pg. 166)	Direzza® DZ102 (Pg. 167)	Sport Maxx Race 2™ (Pg. 168)	SP Sport Maxx® (Pg. 170)	SP Sport Maxx® GT 600 SP Sport Maxx® GT 600 DSST™ (Pg. 172)	SP Sport® 01 (Pg. 174)	SP Sport® 01 DSST® ROF (Pg. 174)
205/40R18												86W								
215/40R18																				85Y
P215/45R18																				
215/45R18	93W			89W																
225/40R18	*92Y			88V										88Y						
P225/40R18																				
225/40ZR18										92Y										
225/45R18	*95Y																			
225/45ZR18										95Y										
225/50R18	95W			95V																
P225/50R18		*94V																		
P225/55R18							*97V													
225/55R18																				
225/60R18	*100V																			
235/40R18	*95Y							*91Y												
235/40ZR18								*95Y	95Y											
235/45ZR18								*94Y												
P235/45R18						94V														
235/45R18	94V												94Y							
235/50ZR18																				
P235/50R18																				
235/50R18	*97W																			
245/35R18																				
245/35ZR18										92Y										
245/40R18	93Y										97W							93W		
245/40ZR18										97Y										
P245/40RF18																				
245/40RF18																				
245/45R18	96W								*96Y	100Y										
P245/45R18		*96V																		
245/45ZR18																				
255/35R18	94Y							*94Y					90Y							
255/35ZR18										94Y										
255/40R18	99Y																			
255/45ZR18																				
255/45R18	99W																			
255/55R18	109V																			
265/35R18	97Y																			
265/35ZR18										97Y										
265/45ZR18								*101Y												
275/35R18																				
275/35ZR18										95Y										
275/40R18									*99Y	103Y										

\*Discontinued in 2020

# PERFORMANCE TIRE SELECTOR CHART

	ALL-SEASON UHP			ALL-SEASON SPORT/TOURING				SUMMER UHP												
	Signature HP (Pg. 152)	SP Sport Maxx® A1 A/S SP Sport Maxx® A1-A A/S (Pg. 154)	SP Sport Maxx® A1 A/S DSST (Pg. 154)	SP Sport® 5000 SP Sport® 5000 NRT (Pg. 156)	SP Sport® 5000M (Pg. 156)	SP Sport® 5000 DSST® CTT SP Sport® 5000M DSST® CTT (Pg. 156)	SP Sport 7000 A/S® (Pg. 158)	SP Sport® 7010 A/S DSST® (Pg. 159)	SP Sport Maxx® GT SP Sport Maxx® GT w/ NoiseShield Technology® (Pg. 160)	SP Sport Maxx® GT ROF (Pg. 160)	SP Sport Maxx RT2 SP Sport Maxx RT2 ROF SP Sport Maxx RT2 NST (Pg. 162)	SP Sport Maxx RT™ SP Sport Maxx RT™ w/ NoiseShield Technology® (Pg. 164)	SP Sport Maxx RT™ ROF (Pg. 164)	SP Sport Maxx® 050 SP Sport Maxx® 050 DSST® CTT SP Sport Maxx® 050 DSST® CTT w/ Noise Reduction Technology® (Pg. 166)	Direzza® DZ102 (Pg. 167)	SP Sport Maxx Race 2™ (Pg. 168)	SP Sport Maxx® (Pg. 170)	SP Sport Maxx® GT 600 SP Sport Maxx® GT 600 DSST® (Pg. 172)	SP Sport® 01 (Pg. 174)	SP Sport® 01 DSST® ROF (Pg. 174)
225/35R19																				
225/40R19	93Y																			
P225/45R19				92W																
225/45R19	92Y									92W										
235/35R19	91Y																			
235/35ZR19										91Y										
235/40R19	96W												96Y							
P235/50R19						99V														
245/35R19	93Y																			
245/35ZR19										93Y	93Y									
245/40ZR19										98Y										
P245/40RF19				94V	94V															
245/40R19	94W								94Y									98W		
245/40RF19													94W							
245/45R19	98W												*98Y							
P245/45R19		*98V																		
245/45RF19													*98Y							
245/45ZR19																				
245/50RF19			101V																	
255/30ZR19										91Y										
255/35ZR19								96Y												
255/35R19	96Y																			
P255/40RF19					96V															
255/40R19	96Y																			
255/40ZR19										100Y										
255/40RF19													96Y							
255/50R19	107W																			
265/30R19																				
265/35R19	94Y												94Y							
265/35ZR19											98Y									
265/35RF19													94W							
275/30R19																				
275/35R19	96Y								96Y											
275/35ZR19										100Y										
275/40R19	101Y																			
275/40ZR19																				
275/55R19	111V																			
285/30ZR19																				
285/35R19																		103W		
305/30ZR19																				
325/30ZR19																				

\*Discontinued in 2020

	ALL-SEASON UHP			ALL-SEASON SPORT/TOURING				SUMMER UHP												
	Signature HP (Pg. 152)	SP Sport Maxx® A1 A/S SP Sport Maxx® A1-A A/S (Pg. 154)	SP Sport Maxx® A1 A/S DSST (Pg. 154)	SP Sport® 5000 SP Sport® 5000 NRT (Pg. 156)	SP Sport® 5000M (Pg. 156)	SP Sport® 5000 DSST® CTT SP Sport® 5000M DSST® CTT (Pg. 156)	SP Sport® 7000 A/S® (Pg. 158)	SP Sport® 7010 A/S DSST® (Pg. 159)	SP Sport Maxx® GT SP Sport Maxx® GT w/ NoiseShield Technology® (Pg. 160)	SP Sport Maxx® GT R0F (Pg. 160)	Sport Maxx RT2 Sport Maxx RT2 R0F Sport Maxx RT2 NST (Pg. 162)	Sport Maxx RT™ Sport Maxx RT™ w/ NoiseShield Technology® (Pg. 164)	Sport Maxx RT™ R0F (Pg. 164)	SP Sport Maxx® 060 SP Sport Maxx® 060 DSST® CTT SP Sport Maxx® 060 DSST® CTT w/ Noise Reduction Technology® (Pg. 166)	Direzza® DZ102 (Pg. 167)	Sport Maxx Race 2™ (Pg. 168)	SP Sport Maxx® (Pg. 170)	SP Sport Maxx® GT 600 SP Sport Maxx® GT 600 DSST® (Pg. 172)	SP Sport® 01 (Pg. 174)	SP Sport® 01 DSST® R0F (Pg. 174)
245/35ZR20																				
245/35R20									95Y							95Y				
245/40ZR20								99Y												
245/40R20	99W																			
245/45R20	103Y																			
255/35R20																				
255/35ZR20								97Y										97Y		
255/40RF20							97W													
255/40ZRF20																			*97Y	
255/45R20	101W																			
265/30ZR20								94Y												
265/35R20	99W							99Y												
265/35ZR20																99Y				
265/45R20	108Y							104Y												
265/45ZR20								*108Y												
275/30R20								97Y												
275/35ZR20								102Y												
275/35R20	102Y																			
275/40R20	106Y							106W												
275/50R20																		113W		
P275/55R20				111H																
285/30ZR20																		99Y		
285/35RF20							100W													
285/35ZRF20																			*100Y	
295/30ZR20																				
305/30ZR20																103Y				
315/35R20								110W												
245/40RF21													96Y							
255/40R21								102Y												
255/40ZR21									102Y											
265/40ZR21								*105Y												
275/30ZR21																				
275/35ZR21								103Y												
275/35RF21													99Y							
275/40ZR21																		*107Y		
285/35R21								105Y												
285/35ZR21									105Y											
295/35R21								105Y											107Y	
325/30R21								108Y												
325/30ZR21																108Y				
265/35ZR22																				

\*Discontinued in 2020

# PERFORMANCE TIRE SELECTOR CHART

# SIGNATURE HP

Bold Style Meets Experienced Handling for All-Season Performance



## FEATURES

Asymmetric tread design

Circumferential grooves

Innovative blade pattern

Contoured edges

Rim guard

Jointless Band Technology™

## BENEFITS

Offers superior all-season handling for wet or dry roads

Help channel water, slush and snow away from the tread for enhanced traction

Offers long-lasting traction and enhances turning in snow and on ice

Reduce noise and enhance tread life

Helps protect wheels from accidental curb damage

Helps maintain the tire's shape and enables smooth performance at highway speeds



All-Season



Dry Traction



Ultra Wet  
Traction



Steering  
Responsiveness



Cornering  
Stability

† See page 145 for complete details.

## SIGNATURE HP SPECIFICATIONS

SIZE	SERVICE DESCRIPTION	LOAD RANGE	SIDEWALL	PRODUCT CODE	MATERIAL NUMBER	APPROVED RIM WIDTH (INS)	MEASURING RIM WIDTH (INS)	SECTION WIDTH (INS)	OVERALL DIAMETER (INS)	MAX LOAD (LBS)	TREAD DEPTH (IN 32NDS)	REVS/ MILE	UTQG
205/55R16	91V	SL	BSW	264004915	223793	5.5 - 7.5	6.5	8.4	24.9	1,356	10	839	500 AA A
*205/60R16	92V	SL	BSW	264004916	223794	5.5 - 7.5	6	8.2	25.7	1,389	10	813	500 AA A
205/45R17	88W	XL	VSB	264004933	235414	6.5 - 7.5	7	8.1	24.3	1,235	10	862	500 AA A
*205/50R17	93V	XL	BSW	264004900	219301	5.5 - 7.5	6.5	8.4	25.1	1,433	10	833	500 AA A
215/45R17	91W	XL	BSW	264004901	219302	7 - 8	7	8.39	24.65	1,356	10	848	500 AA A
225/45R17	94W	XL	BSW	264004902	219305	7 - 8.5	7.5	8.9	25	1,477	10	837	500 AA A
*225/50R17	94W	SL	BSW	264004904	219307	6 - 8	7	9.2	25.9	1,477	10	807	500 AA A
*225/55R17	97V	SL	BSW	264004917	223797	6 - 8	7	9.2	26.8	1,609	10	780	500 AA A
235/45R17	94W	SL	BSW	264004905	219311	7.5 - 9	8	9.3	25.4	1,477	10	823	500 AA A
235/50R17	96V	SL	BSW	264004919	223799	6.5 - 8.5	7.5	9.7	26.3	1,565	10	795	500 AA A
235/55R17	99W	SL	BSW	264004920	223800	6.5 - 8.5	7.5	9.7	27.2	1,709	10	768	500 AA A
245/40R17	91W	SL	BSW	264004921	223941	8 - 9.5	8.5	9.8	24.7	1,356	10	845	500 AA A
245/45R17	95W	SL	BSW	264004912	222523	7.5 - 9	8	9.6	25.7	1,521	10	813	500 AA A
215/45R18	93W	XL	BSW	264004914	222525	7 - 8	7	8.4	25.6	1,433	10	816	500 AA A
*225/40R18	92Y	XL	VSB	264004951	236682	7.5 - 9	8	9.06	25.08	1,389	10	833	500 AA A
*225/45R18	95Y	XL	VSB	264004950	236681	7 - 8.5	7.5	8.86	25.9	1,521	10	806	500 AA A
225/50R18	95W	SL	BSW	264004925	223945	6 - 8	7	9.2	26.9	1,521	10	777	500 AA A
*225/60R18	100V	SL	BSW	264004910	222521	6 - 8	6.5	9	28.6	1,764	10	731	500 AA A
*235/40R18	95Y	XL	VSB	264004952	236683	8 - 9.5	8.5	9.49	25.39	1,521	10	823	500 AA A
235/45R18	94W	SL	BSW	264004906	219312	7.5 - 9	8	9.3	26.3	1,477	10	795	500 AA A
*235/50R18	97W	SL	BSW	264004907	219313	6.5 - 8.5	7.5	9.7	27.3	1,609	10	766	500 AA A
245/40R18	93Y	SL	VSB	264004953	236684	8 - 9.5	8.5	9.76	25.71	1,433	10	813	500 AA A
245/45R18	96W	SL	BSW	264004909	219317	7.5 - 9	8	9.6	26.7	1,565	10	783	500 AA A
255/35R18	94Y	XL	VSB	264004954	236685	8.5 - 10	9	10.24	25	1,477	10	836	500 AA A
255/40R18	99Y	XL	VSB	264004956	236687	8.5 - 10	9	10.24	26.02	1,709	10	803	500 AA A
255/45R18	99W	SL	BSW	264004927	223947	8 - 9.5	8.5	10	27	1,709	10	774	500 AA A
255/55R18	109V	XL	BSW	264004929	226971	7 - 8	8	10.4	29	2,271	10	720	500 AA A
265/35R18	97Y	XL	VSB	264004941	235421	9 - 10.5	9.5	10.7	25.3	1,609	10	826	500 AA A
225/40R19	93Y	XL	VSB	264004940	235420	7.5 - 9	8	9.1	26.1	1,433	10	801	500 AA A
225/45R19	92Y	SL	VSB	264004937	235417	7 - 8.5	7.5	8.9	27	1,565	10	775	500 AA A
235/35R19	91Y	XL	VSB	264004938	235418	8 - 9.5	8.5	9.5	25.5	1,356	10	821	500 AA A
235/40R19	96W	XL	VSB	264004932	235413	8 - 9.5	8.5	9.5	26.4	1,565	10	791	500 AA A
245/35R19	93Y	XL	VSB	264004944	235424	8 - 9.5	8.5	9.8	25.8	1,433	10	810	500 AA A
245/40R19	94W	SL	BSW	264004908	219316	8 - 9.5	8.5	9.8	26.7	1,477	10	782	500 AA A
245/45R19	98W	SL	BSW	264004926	223946	7.5 - 9	8	9.6	27.7	1,653	10	755	500 AA A
255/35R19	96Y	XL	VSB	264004955	236686	8.5 - 10	9	10.24	26.02	1,565	10	803	500 AA A
255/40R19	96Y	SL	VSB	264004935	235415	8.5 - 10	9	10.24	27.05	1,565	10	773	500 AA A
255/50R19	107W	XL	BSW	264004913	222524	7 - 9	8	10.4	29.1	2,149	10	718	500 AA A
265/35R19	94Y	SL	VSB	264004943	235423	9 - 10	9.5	10.67	26.34	1,477	10	793	500 AA A
275/35R19	96Y	SL	VSB	264004939	235419	9 - 11	9.5	10.9	26.6	1,565	10	787	500 AA A
275/40R19	101Y	SL	VSB	264004947	235427	9 - 11	9.5	10.9	27.7	1,819	10	755	500 AA A
275/55R19	111V	SL	VSB	264004948	235428	7.5 - 9.5	8.5	11.2	30.9	2,403	10	676	500 AA A
245/40R20	99W	XL	VSB	264004942	235422	8 - 9.5	8.5	9.76	27.72	1,709	9	754	500 AA A
245/45R20	103Y	XL	VSB	264004930	235411	7.5 - 9	8	9.57	28.66	1,929	10	729	500 AA A
255/45R20	101W	SL	VSB	264004936	235416	8 - 9.5	8.5	10.04	29.06	1,819	10	719	500 AA A
265/35R20	99W	XL	VSB	264004946	235426	9 - 10.5	9.5	10.7	27.3	1,709	9	765	500 AA A
265/45R20	108Y	XL	VSB	264004949	235429	8.5 - 10	9	10.5	29.4	2,205	10	712	500 AA A
275/35R20	102Y	XL	VSB	264004945	235425	9 - 11	9.5	10.94	27.56	1,874	10	758	500 AA A
275/40R20	106Y	XL	VSB	264004931	235412	9 - 11	9.5	10.94	28.7	2,094	10	729	500 AA A

\*Discontinued 2020

Do not attempt to mount 16" rim diameter tires on 16.5" rim diameter wheels; this may result in serious injury or death.

For more complete information, go to Tire-HQ™ at [www.tire-hq.com](http://www.tire-hq.com).



SP SPORT MAXX A1 A/S

SP SPORT MAXX A1-A A/S

# SP SPORT MAXX® A1 A/S SP SPORT MAXX® A1-A A/S

Luxury Sport Tire with Commanding Power

## FEATURES

Multi-Radius Tread Technology™

Optimal Tread Pattern Technology

Integral Rubber Matrix tread comprised of an optimized blend of silica and high-structured carbon black

Multi-Pitch Tread Design Technology™

Jointless Band Technology™

Max Flange Shield®

## BENEFITS

Helps deliver superb dry handling while maintaining wet handling

Enhances straight line stability and on-center steering feel

Demonstrates excellent acceleration and braking performance

Helps reduce noise for a quiet ride

Helps maintain the tire's shape and enables smooth performance at highway speeds

Helps protect rims from accidental curb damage

### SP SPORT MAXX A1 A/S SPECIFICATIONS

SIZE	SERVICE DESCRIPTION	LOAD RANGE	SIDEWALL	PRODUCT CODE	MATERIAL NUMBER	APPROVED RIM WIDTH (INS)	MEASURING RIM WIDTH (INS)	SECTION WIDTH (INS)	OVERALL DIAMETER (INS)	MAX LOAD (LBS)	TREAD DEPTH (IN 32NDS)	REVS/ MILE	UTQG	ORIGINAL EQUIPMENT FITMENT
* P245/45R19	98V	SL	BSW	265040745	204414	7.5 - 9.0	8	9.6	27.7	1,653	10	755	340 A A	LEXUS LS (13-18)
<b>SP SPORT MAXX A1 A/S DSST</b>														
245/50RF19	101V	SL	BSW	265032001	235244	7 - 8.5	7.5	9.96	28.7	1,819	9	728	340 A A	LEXUS LS (19-21)

\*Discontinued 2020

### SP SPORT MAXX A1-A A/S SPECIFICATIONS

SIZE	SERVICE DESCRIPTION	LOAD RANGE	SIDEWALL	PRODUCT CODE	MATERIAL NUMBER	APPROVED RIM WIDTH (INS)	MEASURING RIM WIDTH (INS)	SECTION WIDTH (INS)	OVERALL DIAMETER (INS)	MAX LOAD (LBS)	TREAD DEPTH (IN 32NDS)	REVS/ MILE	UTQG	ORIGINAL EQUIPMENT FITMENT
*P225/50R18	94V	SL	BSW	265040722	205093	6.0 - 8.0	7	9.2	26.9	1,477	10	777	260 A A	INFINITY G37 (14-17)
*P245/45R18	96V	SL	BSW	265040720	209525	7.5 - 9.0	8	9.6	26.7	1,565	10	784	260 A A	INFINITY G37 (14-17)

\*Discontinued 2020

For more complete information, go to Tire-HQ™ at [www.tire-hq.com](http://www.tire-hq.com).



All-Season



Comfortable,  
Refined Handling



Chosen as Original Equipment  
by Global Vehicle Manufacturers







# SP SPORT® 5000 SP SPORT® 5000M

(Select sizes with DSST® CTT†)

## High-Performance All-Season Tires



TREAD PATTERN FOR  
MATERIAL #193265 ONLY.†

### FEATURES

- Innovative, asymmetrical tread design
- Full-width, twin-cut steel belts
- Exclusive, high-performance, all-season tread
- Max Flange Shield® (available in select sizes)
- Dunlop® Self-Supporting Technology (DSST)†\*
- Combined Tire Technology (CTT)\*
- Jointless Band Technology™
- Reinforced Side Layer†
- Dimpled Sidewall†

### BENEFITS

- Helps provide a balance of wet and dry performance
- Ride uniformity and excellent footprint shape
- Enhances grip, control, energy absorption and treadwear in a range of driving conditions
- Helps protect rims from accidental curb damage
- Sidewall construction to help allow continued driving on a flat tire for up to 50 miles at 50 mph in normal conditions
- Less tire weight and rounder cavity shape help provide a softer ride
- Helps maintain the tire's shape and enables smooth performance at highway speeds
- Temporarily supports the vehicle's weight when air pressure is lost
- Helps limit temperature increases in the sidewall when the tire is driven while flat



All-Season



Dry Traction



Ultra Wet  
Traction



Cornering  
Stability



Chosen as Original Equipment  
by Global Vehicle Manufacturers

† Refer to the run-flat owner's manual/limited warranty recommendations on operation at low or no air pressure. Tire pressure monitoring system required. Sold separately.

\* Only on SP Sport 5000 DSST CTT and SP Sport 5000M DSST CTT.

† Only on SP Sport 5000 A/S DSST CTT.

## SP SPORT 5000 SPECIFICATIONS

SIZE	SERVICE DESCRIPTION	LOAD RANGE	SIDEWALL	PRODUCT CODE	MATERIAL NUMBER	APPROVED RIM WIDTH (INS)	MEASURING RIM WIDTH (INS)	SECTION WIDTH (INS)	OVERALL DIAMETER (INS)	MAX LOAD (LBS)	TREAD DEPTH (IN 32NDS)	REVS/MILE	UTQG	ORIGINAL EQUIPMENT FITMENT
215/45R18	89W	SL	BSW	265038960	225746	7.0 - 8.0	7	8.4	25.6	1,279	10	816	340 B A	MAZDA MAZDA 3 (14-18)
225/40R18	88V	SL	BLT	265014747	236478	7.5 - 9	8	9.1	25.1	1,235	9	833	340 B A	TOYOTA COROLLA (19-21)
225/50R18	95V	SL	BSW	265014757	233303	6 - 8	7	9.17	26.89	1,521	10	777	340 A A	TOYOTA C-HR (18-21)
P225/45R19	92W	SL	BSW	265037649	224678	7.0 - 8.5	7.5	8.9	27	1,389	10	775	340 A A	MAZDA MAZDA 6 (13-17)
<b>SP SPORT 5000 DSST CTT</b>														
P245/40RF19	94V	SL	BSW	265021144	225411	8.0 - 9.5	8.5	9.8	26.7	1,477	10	782	260 B A	INFINITI Q50 / Q60 (14-15)
P255/40RF19	96V	SL	BSW	265021145	232563	8.5 - 10.0	9	10.2	27.1	1,565	10	771	260 A A	INFINITI Q50 / Q60 (17-21)
<b>SP SPORT 5000 DSST NRT (Noise Reduction Technology)</b>														
P245/40RF19	94V	SL	BSW	265021153	231935	8.5 - 10.0	9	10.2	27.1	1,477	10	771	260 B A	INFINITI Q50 / Q60 (16-21)

## SP SPORT 5000M SPECIFICATIONS

SIZE	SERVICE DESCRIPTION	LOAD RANGE	SIDEWALL	PRODUCT CODE	MATERIAL NUMBER	APPROVED RIM WIDTH (INS)	MEASURING RIM WIDTH (INS)	SECTION WIDTH (INS)	OVERALL DIAMETER (INS)	MAX LOAD (LBS)	TREAD DEPTH (IN 32NDS)	REVS/MILE	UTQG	ORIGINAL EQUIPMENT FITMENT
225/45R17	91V	SL	BSW	265037647	198850	7.0 - 8.5	7.5	8.9	25	1,356	10	837	340 A A	LEXUS IS / IS Hybrid (13-20)
P275/55R20	111H	SL	VSB	265014741	201035	7.5 - 9.5	8.5	11.2	31.9	2,403	11	655	340 A A	TOYOTA SEQUOIA (13-21), TOYOTA TUNDRA (13-21)

For more complete information, go to Tire-HQ™ at [www.tire-hq.com](http://www.tire-hq.com).



# SP SPORT 7000 A/S®

All-Season High Performance and a Smooth, Quiet Ride

## FEATURES

Multi-Radius Tread Technology™

5-Pitch Technology™

Jointless Band Technology™

## BENEFITS

Helps deliver superb dry handling while maintaining wet handling

Aids noise reduction for a quiet ride

Helps maintain the tire's shape and enables smooth performance at highway speeds

### SP SPORT 7000 A/S SPECIFICATIONS

SIZE	SERVICE DESCRIPTION	LOAD RANGE	SIDEWALL	PRODUCT CODE	MATERIAL NUMBER	APPROVED RIM WIDTH (INS)	MEASURING RIM WIDTH (INS)	SECTION WIDTH (INS)	OVERALL DIAMETER (INS)	MAX LOAD (LBS)	TREAD DEPTH (IN 32NDS)	REVS/ MILE	UTQG	ORIGINAL EQUIPMENT FITMENT
185/55R16	83H	SL	BSW	265004140	208600	5.0 - 6.5	6	7.6	24.2	1,074	10	871	340 A A	HONDA FIT (13-16), NISSAN MICRA (15-19)
P215/60R16	94H	SL	VSB	265004154	204025	6.0 - 7.5	6.5	8.7	26.1	1,477	10	800	340 A A	
*P225/55R18	97V	SL	BSW	265004178	206172	6.0 - 8.0	7	9.2	27.8	1,609	10	753	340 A A	INFINITI EX35 / QX50 (13-17)
P235/45R18	94V	SL	BLT	265004179	223559	7.5 - 9.0	8	9.3	26.3	1,477	10	793	340 A A	NISSAN ALTIMA (13-18)
P235/50R19	99V	SL	VSB	265004190	207983	6.5 - 8.5	7.5	9.7	28.3	1,709	10	738	340 A A	TOYOTA SIENNA (13-20)

\*Discontinued 2020

Do not attempt to mount 16" rim diameter tires on 16.5" rim diameter wheels; this may result in serious injury or death.

For more complete information, go to Tire-HQ™ at [www.tire-hq.com](http://www.tire-hq.com).



All-Season



Dry Traction



Ultra Wet Traction



Chosen as Original Equipment  
by Global Vehicle Manufacturers

# ALL-SEASON SPORT/TOURING

## SP SPORT® 7010 A/S DSST®†

Ultra Performance with Wet and Dry Traction

PERFORMANCE



### FEATURES

Asymmetric tread

M+S-rated, all-season tread design

Solid center rib

Circumferential and lateral-sweeping grooves

Jointless Band Technology™

Multi-Pitch Tread Design Technology™

Dunlop® Self-Supporting Technology (DSST)†

### BENEFITS

Helps provide a balance of wet and dry performance

Helps deliver consistent all-season traction and wet handling

Helps enhance steering response and driver feedback

Help provide efficient water evacuation for enhanced traction

Helps maintain the tire's shape and enables smooth performance at highway speeds

Helps reduce noise for a quiet ride

Sidewall construction to help allow continued driving on a flat tire for up to 50 miles at 50 mph in normal conditions

### SP SPORT 7010 A/S DSST SPECIFICATIONS

SIZE	SERVICE DESCRIPTION	LOAD RANGE	SIDEWALL	PRODUCT CODE	MATERIAL NUMBER	APPROVED RIM WIDTH (INS)	MEASURING RIM WIDTH (INS)	SECTION WIDTH (INS)	OVERALL DIAMETER (INS)	MAX LOAD (LBS)	TREAD DEPTH (IN 32NDS)	REVS/ MILE	UTQG	ORIGINAL EQUIPMENT FITMENT
255/40RF20	97W	SL	BSW	265039947	207790	8.5 - 10.0	9	10.2	28	1,609	10	746	240 A A	NISSAN GT-R (14-19)
285/35RF20	100W	SL	BSW	265039946	207789	9.5 - 11.0	10	11.4	27.9	1,764	10	750	240 A A	NISSAN GT-R (14-19)

For more complete information, go to Tire-HQ™ at [www.tire-hq.com](http://www.tire-hq.com).



All-Season



Cornering Stability



Steering Responsiveness



Chosen as Original Equipment  
by Global Vehicle Manufacturers

† Refer to the run-flat owner's manual/limited warranty recommendations on operation at low or no air pressure. Tire pressure monitoring system required. Sold separately.



# SP SPORT MAXX® GT

(Select sizes with ROF<sup>†</sup>/NoiseShield Technology®)

Outstanding Driver Feedback and Responsive Handling



## FEATURES

### TOUCH TECHNOLOGY™

Multi-Radius Tread Technology™

Flatter tread profile

Reinforced sidewall construction

Asymmetric tread design

Unique bead fit system

Hybrid Jointless Band Technology™

Performance compounding

Non-directional tread

## BENEFITS

Helps provide enhanced communication between driver and road for fast driver feedback and precise steering response

Helps deliver superb dry handling while maintaining wet handling

Enlarged contact patch for enhanced cornering capability

Helps reduce lateral flex during cornering to enhance the driver's feel for the road

Helps provide a balance of wet and dry performance

Helps enhance force transmission between tire and wheel for superb driver feedback

Helps maintain tire shape for smooth performance at highway speeds and helps prevent flatspotting after vehicle is parked for extended periods

Enhanced ride and traction

Allows for tire rotation on staggered fitments common to high-end performance vehicles, helping to promote long tread life



Dry Traction



Ultra Wet Traction



Cornering Stability



Steering Responsiveness



Chosen as Original Equipment  
by Global Vehicle Manufacturers

<sup>†</sup> Refer to the run-flat owner's manual/limited warranty recommendations on operation at low or no air pressure. Tire pressure monitoring system required. Sold separately.

## SP SPORT MAXX GT SPECIFICATIONS

SIZE	SERVICE DESCRIPTION	LOAD RANGE	SIDEWALL	PRODUCT CODE	MATERIAL NUMBER	APPROVED RIM WIDTH (INS)	MEASURING RIM WIDTH (INS)	SECTION WIDTH (INS)	OVERALL DIAMETER (INS)	MAX LOAD (LBS)	TREAD DEPTH (IN 32NDS)	REVS/MILE	UTQG	ORIGINAL EQUIPMENT FITMENT
*235/40R18	91Y	SL	BLT	265023803	217593	8 - 9.5	8.5	9.5	25.4	1,356	10	823	240 AA A	
*235/40ZR18	95Y	XL	BLT	265023833	228284	8 - 9.5	8.5	9.5	25.4	1,521	10	823	240 AA A	MERCEDES-BENZ CLA / CLA45 AMG (13-20)
*235/45ZR18	94Y	SL	BLT	265023813	222113	7.5 - 9	8	9.3	26.3	1,477	9	794	240 AA A	
*255/35R18	94Y	XL	BLT	265023804	217603	8.5 - 10	9	10.2	25	1,477	10	836	240 AA A	
*265/45ZR18	101Y	SL	BLT	265023814	222114	8.5 - 10	9	10.5	27.4	1,819	8	764	240 AA A	
255/35ZR19	96Y	XL	BLT	265023729	206320	8.5 - 10	9	10.2	26	1,565	10	803	240 AA A	AUDI A4 / A5 (13-17)
245/40ZR20	99Y	XL	BLT	265023848	235138	8 - 9.5	8.5	9.76	27.72	1,709	9	754	240 AA A	JAGUAR XJ / XJL (13-19)
*255/35ZR20	97Y	XL	BLT	265023859	230824	8.5 - 10	9	10.24	27.01	1,609	9	774	240 AA A	
*265/30ZR20	94Y	XL	BLT	265023794	214431	9 - 10	9.5	10.7	26.3	1,477	10	795	240 AA A	
265/35R20	99Y	XL	BLT	265023812	221787	9 - 10.5	9.5	10.7	27.3	1,709	9	765	240 AA A	AUDI A7 / RS7 (13-18)
265/45R20	104Y	SL	VSB	265025944	234746	8.5 - 10	9	10.47	29.37	1,984	10	712	240 AA A	MERCEDES-BENZ M-CLASS (13-18)
*265/45ZR20	108Y	XL	BLT	265023805	218533	8.5 - 10	9	10.5	29.4	2,205	8	711	240 AA A	
275/35ZR20	102Y	XL	BLT	265023849	235157	9 - 11	9.5	10.94	27.56	1,874	9	758	240 AA A	JAGUAR XJ / XJL (13-19)
255/40R21	102Y	XL	BLT	265023856	225064	8.5 - 10	9	10.24	29.02	1,874	9	7	240 AA A	AUDI Q5 (14-18)
265/40ZR21	105Y	XL	BLT	265023806	218534	8.5 - 10	9	10.5	30.4	2,039	8	689	240 AA A	BENTLEY MULSANNE (13-16)
275/35ZR21	103Y	XL	BLT	265023825	223898	9 - 11	9.5	10.94	28.54	1,929	9	732	240 AA A	AUDI A8 (13-15)
<b>SP SPORT MAXX GT NST (NOISESHIELD TECHNOLOGY)</b>														
265/45ZR20	108Y	XL	BLT	265040901	234187	8.5 - 10.0	9	10.5	29.4	2,205	8	712	240 AA A	BENTLEY MULSANNE (13-21)
275/35ZR21	103Y	XL	BLT	265040900	228934	9.0 - 11.0	9.5	10.9	28.5	1,929	9	732	240 AA A	AUDI A8 (15-18)
*265/40ZR21	105Y	XL	BLT	265040902	234188	9.0 - 10.5	9.5	10.7	29.3	2,039	8	713	240 AA A	
<b>SP SPORT MAXX GT ROF</b>														
*245/45R18	96Y	SL	BLT	265027403	217113	7.5 - 9	8	9.6	26.7	1,565	9	784	240 AA A	
*275/40R18	99Y	SL	BLT	265027404	217114	9 - 11	9.5	10.9	26.7	1,709	9	784	240 AA A	
245/40R19	94Y	SL	BLT	265023807	218842	8 - 9.5	8.5	9.8	26.7	1,477	9	782	240 AA A	BMW 5 SERIES / 6 SERIES (13-17)
275/35R19	96Y	SL	BLT	265023808	218843	9 - 11	9.5	10.9	26.6	1,565	9	787	240 AA A	BMW 5 SERIES / 6 SERIES (13-17)
245/35R20	95Y	XL	BLT	265027405	217240	8 - 9.5	8.5	9.8	26.8	1,521	9	781	240 AA A	BMW 5 SERIES / 6 SERIES (13-21)
275/30R20	97Y	XL	BLT	265027406	217321	9 - 10	9.5	10.9	26.5	1,609	9	788	240 AA A	BMW 5 SERIES / 6 SERIES (13-21)
275/40R20	106W	XL	BLT	265027415	225846	9 - 11	9.5	10.94	28.7	2,094	10	729	240 AA A	BMW X5 (15-21), BMW X6 (15-21)
315/35R20	110W	XL	BLT	265027414	225845	10.5 - 12.5	11	12.6	28.7	2,337	10	729	240 AA A	BMW X5 (15-21)
285/35R21	105Y	XL	BLT	265027420	235695	9.5 - 11	10	11.42	28.86	2,039	10	724	240 AA A	BMW X5 (15-21), BMW X6 (15-21)
325/30R21	108Y	XL	BLT	265027419	235694	11 - 12.5	11.5	13.03	28.7	2,205	10	728	240 AA A	BMW X5 (15-21), BMW X6 (15-21)

For more complete information, go to Tire-HQ™ at [www.tire-hq.com](http://www.tire-hq.com).

# SPORT MAXX RT2

(Select sizes with ROF†)

A Champion in Grip and Steering Precision



## FEATURES

Specific bead seat system

Jointless belt

Max Flange Shield®

Multi-radius tread

Asymmetric tread design

Flatter tread profile

Power braking blocks

## BENEFITS

Strengthens the link between tire and rim for a more precise driving experience

Reduces circumferential deformations at high speeds

Firm rubber guard that extends beyond the rim and wraps around the lower sidewall of the tire to help protect rims from accidental curb damage

Significantly better control over the evolution of the footprint in all driving conditions; responsive wet and dry handling; increased cornering control

Improved performance on straight lines and around corners; increased resistance to aquaplaning

Increased stability and steering precision; reduced heel and toe wear; excellent cornering stability and precision; superior dry grip

Shorter braking distances, especially at high speeds



Dry Traction



Ultra Wet Traction



Cornering Stability



Steering Responsiveness



Chosen as Original Equipment  
by Global Vehicle Manufacturers

† Refer to the run-flat owner's manual/limited warranty recommendations on operation at low or no air pressure. Tire pressure monitoring system required. Sold separately.



## SPORT MAXX RT2 SPECIFICATIONS

SIZE	SERVICE DESCRIPTION	LOAD RANGE	SIDEWALL	PRODUCT CODE	MATERIAL NUMBER	APPROVED RIM WIDTH (INS)	MEASURING RIM WIDTH (INS)	SECTION WIDTH (INS)	OVERALL DIAMETER (INS)	MAX LOAD (LBS)	TREAD DEPTH (IN 32NDS)	REVS/MILE	UTQG	ORIGINAL EQUIPMENT FITMENT
225/45R17	94W	XL	BLT	265008003	231823	7 - 8.5	7.5	8.86	24.96	1,477	9	837	240 AA A	MINI CLUBMAN (18-21)
235/45ZR17	97Y	XL	BLT	265008016	240749	7.5 - 9.0	8	9.3	25.4	1,609	9	824	300 AA A	
245/40ZR17	95Y	XL	BLT	265008019	240762	8.0 - 9.5	8.5	9.8	24.7	1,521	9	845	300 AA A	
225/40ZR18	92Y	XL	BLT	265008014	239588	7.5 - 9.0	8	9.1	25.1	1,389	9	833	300 AA A	
225/45ZR18	95Y	XL	BLT	265008020	240766	7.0 - 8.5	7.5	8.86	25.9	1,521	9	806	300 AA A	
235/40ZR18	95Y	XL	BLT	265008017	240750	8.0 - 9.5	8.5	9.5	25.4	1,521	9	823	300 AA A	
245/35ZR18	92Y	XL	BLT	265008026	240772	8.0 - 9.5	8.5	9.8	24.8	1,389	9	844	300 AA A	
245/40ZR18	97Y	XL	BLT	265008015	240748	8.0 - 9.5	8.5	9.8	25.7	1,609	9	813	300 AA A	
245/45R18	100Y	XL	BLT	265023033	236449	7.5 - 9	8	9.6	26.7	1,764	9	784	240 AA A	BMW 5 SERIES / 6 SERIES (18-21)
255/35ZR18	94Y	XL	BLT	265008022	240768	8.5 - 10	9	10.2	25	1,477	9	836	300 AA A	
265/35ZR18	97Y	XL	BLT	265008018	240761	9.0 - 10.5	9.5	10.7	25.3	1,609	9	826	300 AA A	
275/35ZR18	95Y	XL	BLT	265008023	240769	9.0 - 11.0	9.5	10.8	25.6	1,521	9	818	300 AA A	
275/40R18	103Y	XL	BLT	265023032	236611	9 - 11	9.5	10.9	26.7	1,929	9	784	240 AA A	
235/35ZR19	91Y	XL	BLT	265008021	240767	8.0 - 9.5	8.5	9.5	25.5	1,356	9	821	300 AA A	
245/35ZR19	93Y	XL	BLT	265008024	240770	8.0 - 9.5	8.5	9.8	25.8	1,433	9	810	300 AA A	
245/40ZR19	98Y	XL	BLT	265008025	240771	8.0 - 9.5	8.5	9.8	26.7	1,653	9	782	300 AA A	
255/30ZR19	91Y	XL	BLT	265008027	240773	8.5 - 9.5	9	10.3	25.1	1,356	9	833	300 AA A	
255/40ZR19	100Y	XL	BLT	265008028	240774	8.5 - 10.0	9	10.24	27.1	1,764	9	773	300 AA A	
275/35ZR19	100Y	XL	BLT	265008029	240775	9.0 - 11.0	9.5	10.9	26.6	1,764	9	787	300 AA A	
255/40ZR21	102Y	XL	BLT	265008006	233301	8.5 - 10	9	10.24	29.02	1,874	9	7	300 AA A	MERCEDES-BENZ GLC43 AMG (17-21)
285/35ZR21	105Y	XL	BLT	265008007	233302	9.5 - 11	10	11.42	28.86	39	9	724	300 AA A	MERCEDES-BENZ GLC43 AMG (17-21)
<b>SPORT MAXX RT2 ROF</b>														
225/45R19	92W	SL	BLT	265008002	230780	7.0 - 8.5	7.5	8.9	27	1,389	10	775	240 AA A	BMW X1 (16-21), BMW X2 (18-21), MINI COUNTRYMAN (17-21)
<b>SPORT MAXX RT2 NST</b>														
245/45R18	100Y	XL	BLT	265023035	237007	7.5 - 9	8	9.57	26.65	1,764	9	784	240 AA A	MERCEDES-BENZ E-CLASS (17-21)
275/40R18	103Y	XL	BLT	265023034	237004	9 - 11	9.5	10.94	26.65	1,929	9	784	240 AA A	MERCEDES-BENZ E-CLASS (17-21)

For more complete information, go to Tire-HQ™ at [www.tire-hq.com](http://www.tire-hq.com).



# SPORT MAXX RT

(Select sizes with ROF<sup>†</sup>)

Ultra High-Performance with Grip and Braking Developed at the Race Track



## FEATURES

Adaptive tread compound

Massive outer shoulder blocks

Power braking blocks

Low weight construction

## BENEFITS

Helps deliver racing grip and improved braking performance

Help promote increased stability and sure handling when cornering

Help enhance stopping power for shorter braking distance at high speeds

Helps to lower rolling resistance for better performance



Dry Traction



Ultra Wet Traction



Cornering Stability



Steering Responsiveness



Chosen as Original Equipment  
by Global Vehicle Manufacturers

<sup>†</sup> Refer to the run-flat owner's manual/limited warranty recommendations on operation at low or no air pressure. Tire pressure monitoring system required. Sold separately.

## SPORT MAXX RT SPECIFICATIONS

SIZE	SERVICE DESCRIPTION	LOAD RANGE	SIDEWALL	PRODUCT CODE	MATERIAL NUMBER	APPROVED RIM WIDTH (INS)	MEASURING RIM WIDTH (INS)	SECTION WIDTH (INS)	OVERALL DIAMETER (INS)	MAX LOAD (LBS)	TREAD DEPTH (IN 32NDS)	REVS/MILE	UTQG	ORIGINAL EQUIPMENT FITMENT
205/45R17	88W	XL	BLT	265029326	227384	6.5 - 7.5	7	8.1	24.3	1,235	9	862	240 AA A	MINI COOPER (18-21)
235/45R17	94W	SL	BLT	265029322	226946	7.5 - 9	8	9.29	25.35	1,477	9	824	240 AA A	SUBARU IMPREZA WRX (15-21)
245/40R18	97W	XL	BLT	265029323	226947	8 - 9.5	8.5	9.76	25.71	1,609	9	813	240 AA A	SUBARU IMPREZA WRX STI (15-21)
245/35ZR19	93Y	XL	BLT	265029330	228743	8 - 9.5	8.5	9.78	25.8	1,433	8	810	240 AA A	MERCEDES-BENZ C63 AMG (15-21)
265/35ZR19	98Y	XL	BLT	265029331	228744	9 - 10.5	9.5	10.67	26.34	1,653	9	794	240 AA A	MERCEDES-BENZ C63 AMG (15-21)
<b>SPORT MAXX RT ROF</b>														
205/45R17	88W	XL	BLT	265029327	227385	6.5 - 7.5	7	8.1	24.3	1,235	9	862	240 AA A	MINI COOPER (18-21)
205/40R18	86W	XL	BLT	265029328	227386	7.0 - 8.0	7.5	8.4	24.5	1,168	9	855	240 AA A	MINI COOPER (18-21)

For more complete information, go to Tire-HQ™ at [www.tire-hq.com](http://www.tire-hq.com).



# SP SPORT MAXX® 050

(Select sizes with DSST® CTT\*)

High-Performance, Run-Flat Summer Tires

## FEATURES

High-performance tread design for summer use

Hybrid Kevlar®-Nylon Band\*

Reinforced side layer\*

Dimpled sidewall\*

## BENEFITS

Supports maximum handling and performance in warm, dry conditions

Helps maintain tire's structure to balance high-speed performance, comfort and noise

Temporarily supports the vehicle's weight when air pressure is lost

Helps limit temperature increases in the sidewall when the tire is driven while flat

## SP SPORT MAXX 050 SPECIFICATIONS

SIZE	SERVICE DESCRIPTION	LOAD RANGE	SIDEWALL	PRODUCT CODE	MATERIAL NUMBER	APPROVED RIM WIDTH (INS)	MEASURING RIM WIDTH (INS)	SECTION WIDTH (INS)	OVERALL DIAMETER (INS)	MAX LOAD (LBS)	TREAD DEPTH (IN 32NDS)	REVS/MILE	UTQG	ORIGINAL EQUIPMENT FITMENT
235/45R18	94Y	SL	BSW	265023816	222294	7.5 - 9	8	9.29	26.3	1,477	10	794	280 A A	LEXUS GS / GS HYBRID (13-20), LEXUS RC (15-20)
255/35R18	90Y	SL	BSW	265023843	235387	8 - 10	9	10.24	25	1,323	9	836	280 A A	LEXUS IS / IS Hybrid (18-20)
235/40R19	96Y	XL	BSW	265023817	222295	8 - 9.5	8.5	9.49	26.4	1,565	10	791	280 A A	LEXUS GS / GS HYBRID (13-20), LEXUS RC (15-18)
235/40R19	96Y	XL	BLT	265023861	237522	8 - 9.5	8.5	9.49	26.4	1,565	10	791	280 A A	LEXUS IS / IS Hybrid (21), LEXUS RC (19-21)
*245/45R19	98Y	SL	BSW	265023826	224641	7.5 - 9	8	9.57	27.68	1,653	10	755	280 A A	LEXUS LS (13-18)
265/35R19	94Y	SL	BSW	265023818	222296	9 - 10.5	9.5	10.7	26.3	1,477	9	793	280 A A	LEXUS GS / GS HYBRID (13-20), LEXUS RC (15-18)
265/35R19	94Y	SL	BLT	265023863	238473	9 - 10.5	9.5	10.7	26.3	1,477	9	793	280 A A	LEXUS RC (19-21)
<b>SP SPORT MAXX 050 DSST CTT</b>														
245/40RF19	94W	SL	BLT	265023827	225410	8 - 9.5	8.5	9.76	26.73	1,477	10	782	260 A A	INFINITI Q50 / Q60 (14-15)
*245/45RF19	98Y	SL	BSW	265023835	231721	7.5 - 9	8	9.6	27.68	1,653	9	755	280 A A	
255/40RF19	96Y	SL	BSW	265023838	234761	8.5 - 10	9	10.24	27.05	1,565	9	773	260 A A	INFINITI Q50 / Q60 (18-21)
245/40RF21	96Y	SL	BSW	265023830	233603	8 - 9.5	8.5	9.76	28.7	1,565	9	728	280 A A	LEXUS LC (19-21)
275/35RF21	99Y	SL	BSW	265023837	233604	9 - 11	9.5	10.94	28.5	1,709	9	732	280 A A	
<b>SP SPORT MAXX 050 DSST NRT (Noise Reduction Technology)</b>														
245/40RF19	94W	SL	BSW	265031601	231886	8.0 - 9.5	8.5	9.8	26.7	1,477	10	783	260 A A	INFINITI Q50 / Q60 (16-21)
245/40RF19	94W	SL	BLT	265023836	231936	8.0 - 9.5	8.5	9.8	26.7	1,477	10	783	260 A A	INFINITI Q50 / Q60 (16-21)
265/35RF19	94W	SL	BSW	265031602	231887	9.0 - 10.5	9.5	10.7	26.3	1,477	10	794	260 A A	INFINITI Q50 / Q60 (16-21)

\*Discontinued 2020

For more complete information, go to Tire-HQ™ at [www.tire-hq.com](http://www.tire-hq.com).



Dry Traction



Ultra Wet Traction



Cornering Stability



Steering Responsiveness



Rugged Toughness from DuPont™ Kevlar®



Chosen as Original Equipment by Global Vehicle Manufacturers

† Refer to the run-flat owner's manual/limited warranty recommendations on operation at low or no air pressure. Tire pressure monitoring system required. Sold separately.

\*Only on SP Sport Maxx 050 DSST CTT.

DuPont™ and Kevlar® are trademarks or registered trademarks of E.I. du Pont de Nemours and Company used under license by The Goodyear Tire & Rubber Company and affiliates.



# DIREZZA® DZ102

Sleek Styling Meets Impressive Handling for Head-Turning Performance

FEATURES	BENEFITS
Aggressive Unidirectional Tread Design	Offers better water evacuation performance in wet conditions
Silicarbon Matrix™ is a special blend of silica and carbon black	Offers enhanced wet and dry traction
5-Pitch Technology™ and wear trimming	Aid noise reduction and help reduce irregular wear
Deeper lateral cuts and shoulder grooves	Maintain design and performance integrity
Performance-inspired tread and sidewall design	Enhance the overall appearance and ride of the vehicle
Jointless Band Technology™	Enables smooth performance at highway speeds
Max Flange Shield®	Helps protect rims from accidental curb damage

## DIREZZA DZ102 SPECIFICATIONS

SIZE	SERVICE DESCRIPTION	LOAD RANGE	SIDEWALL	PRODUCT CODE	MATERIAL NUMBER	APPROVED RIM WIDTH (INS)	MEASURING RIM WIDTH (INS)	SECTION WIDTH (INS)	OVERALL DIAMETER (INS)	MAX LOAD (LBS)	TREAD DEPTH (IN 32NDS)	REVS/ MILE	UTQG
*205/50R15	86V	SL	BSW	265029801	226798	5.5 - 7.5	6.5	8.4	23.1	1,168	9	911	460 A A
*205/55R15	88V	SL	BSW	265029831	226848	5.5 - 7.5	6.5	8.4	23.9	1,235	9	883	460 A A
*195/50R16	84V	SL	BSW	265029802	226799	5.5 - 7.0	6	7.9	23.7	1,102	9	886	460 A A
*205/45R16	87W	XL	BSW	265029811	226828	6.5 - 7.5	7	8.1	23.2	1,201	9	895	460 A A
*205/55R16	91V	SL	BSW	265029841	226858	5.5 - 7.5	6.5	8.4	24.9	1,356	9	845	460 A A
*215/50R16	90V	SL	BSW	265029804	226821	6.0 - 7.5	7	8.9	24.5	1,323	10	860	460 A A
*225/50R16	92V	SL	BSW	265029805	226822	6.0 - 8.0	7	9.2	24.9	1,389	10	845	460 A A

\*Discontinued 2020

Do not attempt to mount 16" rim diameter tires on 16.5" rim diameter wheels; this may result in serious injury or death.

For more complete information, go to Tire-HQ™ at [www.tire-hq.com](http://www.tire-hq.com).



Dry Traction



Ultra Wet Traction



Cornering Stability



Steering Responsiveness

† See page 145 for complete details.



# SPORT MAXX RACE<sup>®</sup> 2

A Premium Sports Car Tire for Superb Performance on Dry Roads



## FEATURES

Tread groove bridges

Race-derived tread compound

Hybrid Aramid overlay

Optimized tire contour

## BENEFITS

Help enhance tread stiffness for optimal speed and performance

Helps deliver excellent dry grip and track wear

Helps provide steering and handling stability

Helps improve cornering and steering precision



Dry Traction



Cornering  
Stability



Steering  
Responsiveness



Chosen as Original Equipment  
by Global Vehicle Manufacturers

## SPORT MAXX RACE 2 SPECIFICATIONS

SIZE	SERVICE DESCRIPTION	LOAD RANGE	SIDEWALL	PRODUCT CODE	MATERIAL NUMBER	APPROVED RIM WIDTH (INS)	MEASURING RIM WIDTH (INS)	SECTION WIDTH (INS)	OVERALL DIAMETER (INS)	MAX LOAD (LBS)	TREAD DEPTH (IN 32NDS)	REVS/MILE	UTQG	ORIGINAL EQUIPMENT FITMENT
245/35ZR20	95Y	XL	BLT	265008303	235816	8 - 9.5	8.5	9.76	26.77	1,521	8	781	80 AA A	PORSCHE 911 GT3 (18-21), PORSCHE CAYMAN GT4 (20-21)
265/35ZR20	99Y	XL	BLT	265008301	235666	9 - 10.5	9.5	10.67	27.32	1,709	8	765	80 AA A	PORSCHE 911 GT2 RS (18-21)
295/30ZR20	101Y	XL	BLT	265008305	241978	9.5 - 10.5	10	11.5	26.8	1,819	8	781	80 AA A	PORSCHE Cayman GT4 (20-21)
305/30ZR20	103Y	XL	BLT	265008304	235817	10.5 - 11.5	11	12.32	27.24	1,929	7	767	80 AA A	PORSCHE 911 GT3 (18-21)
325/30ZR21	108Y	XL	BLT	265008302	235667	11 - 12.5	11.5	13.03	28.7	2,205	7	728	80 AA A	PORSCHE 911 GT2 RS (18-21)

For more complete information, go to Tire-HQ™ at [www.tire-hq.com](http://www.tire-hq.com).

# SP SPORT MAXX®

Luxury Sport Tire with Commanding Power



## FEATURES

Multi-Radius Tread Technology™

Twin Hydro-Paddle Technology™

Integral Rubber Matrix tread comprised of an optimized blend of silica and high-structured carbon black

Continuous, solid center rib

5-Pitch Technology™

Jointless Band Technology™

Max Flange Shield®

## BENEFITS

Helps deliver superb dry handling while maintaining wet handling

Incorporates a directional tread design that helps to rapidly and efficiently drain water for enhanced wet handling and deep-water performance

Demonstrates excellent acceleration and braking performance

Transfers lateral forces to help provide excellent stability at highway speeds

Aids noise reduction for a quiet ride

Helps maintain the tire's shape and enables smooth performance at highway speeds

Helps protect rims from accidental curb damage



Dry Traction



Ultra Wet Traction



Cornering Stability



Steering Responsiveness



Chosen as Original Equipment  
by Global Vehicle Manufacturers



## SP SPORT MAXX SPECIFICATIONS

SIZE	SERVICE DESCRIPTION	LOAD RANGE	SIDEWALL	PRODUCT CODE	MATERIAL NUMBER	APPROVED RIM WIDTH (INS)	MEASURING RIM WIDTH (INS)	SECTION WIDTH (INS)	OVERALL DIAMETER (INS)	MAX LOAD (LBS)	TREAD DEPTH (IN 32NDS)	REVS/MILE	UTQG	ORIGINAL EQUIPMENT FITMENT
255/35R20	97Y	XL	BLT	265023860	236500	8.5 - 10	9	10.2	27	1,609	9	774	240 AA A	JAGUAR XF / XFR (13-15)
275/50R20	113W	XL	BLT	265023942	232897	7.5 - 9.5	8.5	11.18	30.9	2,535	10	677	240 AA A	MERCEDES-BENZ G65 AMG (13-18)
285/30ZR20	99Y	XL	BLT	265040737	236472	9.5 - 10.5	10	11.4	26.8	1,709	9	780	240 AA A	JAGUAR XF / XFR (13-15)
*275/40ZR21	107Y	XL	BLT	265023778	206587	9 - 11	9.5	10.7	29.6	2,149	10	704	240 AA A	
295/35R21	107Y	XL	BSW	265023776	202041	10 - 11.5	10.5	11.9	29.1	2,149	10	718	240 AA A	AUDI Q7 (13-15)

\*Discontinued 2020

For more complete information, go to Tire-HQ™ at [www.tire-hq.com](http://www.tire-hq.com).



# SP SPORT MAXX® GT 600

(Select sizes with DSST® ROF†)

## High Performance with Wet and Dry Traction



SP SPORT MAXX GT 600  
TREAD PATTERN

### FEATURES

Asymmetric tread

Solid center rib

Circumferential and lateral-sweeping grooves

Jointless Band Technology™

Multi-Pitch Tread Design Technology™

Dunlop® Self-Supporting Technology (DSST)†

### BENEFITS

Helps provide a balance of wet and dry performance

Helps enhance steering response and driver feedback

Help provide efficient water evacuation for enhanced traction

Helps maintain the tire's shape and enables smooth performance at highway speeds

Helps reduce noise for a quiet ride

Sidewall construction to help allow continued driving on a flat tire for up to 50 miles at 50 mph in normal conditions



Dry Traction



Ultra Wet  
Traction



Steering  
Responsiveness



Chosen as Original Equipment  
by Global Vehicle Manufacturers

† Refer to the run-flat owner's manual/limited warranty recommendations on operation at low or no air pressure. Tire pressure monitoring system required. Sold separately.

## SP SPORT MAXX GT 600 SPECIFICATIONS

SIZE	SERVICE DESCRIPTION	LOAD RANGE	SIDEWALL	PRODUCT CODE	MATERIAL NUMBER	APPROVED RIM WIDTH (INS)	MEASURING RIM WIDTH (INS)	SECTION WIDTH (INS)	OVERALL DIAMETER (INS)	MAX LOAD (LBS)	TREAD DEPTH (IN 32NDS)	REVS/MILE	UTQG	ORIGINAL EQUIPMENT FITMENT
245/40R19	98W	XL	BSW	265005100	234000	8 - 9.5	8.5	9.8	26.7	1,653	8	782	200 A A	NISSAN 370Z (18-21)
285/35R19	103W	XL	BSW	265005101	234001	9.5 - 11	10	11.4	26.9	1,929	8	777	200 A A	NISSAN 370Z (18-21)
<b>SP SPORT MAXX GT600 DSST</b>														
*255/40ZRF20	97Y	SL	BSW	265028807	234955	8.5 - 10	9	10.24	28.03	1,609	8	746	200 A A	
*255/40ZRF20	97Y	SL	BSW	265028805	227270	8.5 - 10	9	10.24	28	1,609	6	746	200 A A	
255/40ZRF20	97Y	SL	BSW	265028809	235381	8.5 - 10	9	10.24	28.03	1,609	6	746	200 A A	NISSAN GT-R NISMO (18-19)
255/40ZRF20	97Y	SL	BSW	265028811	240115	8.5 - 10	9	10.24	28	1,609	6	746	200 A A	NISSAN GT-R NISMO (20-21)
*285/35ZRF20	100Y	SL	BSW	265028808	234956	9.5 - 11	10	11.42	27.9	1,764	8	750	200 A A	
*285/35ZRF20	100Y	SL	BSW	265028806	227421	9.5 - 11	10	11.4	27.9	1,764	7	750	200 A A	
285/35ZRF20	100Y	SL	BSW	265028810	235382	9.5 - 11	10	11.42	27.87	1,764	6	750	160 A A	NISSAN GT-R NISMO (18-19)
285/35ZRF20	100Y	SL	BSW	265028812	240116	9.5 - 11	10	11.4	27.9	1,764	6	750	160 A A	NISSAN GT-R NISMO (20-21)

\*Discontinued 2020

For more complete information, go to Tire-HQ™ at [www.tire-hq.com](http://www.tire-hq.com).



# SP SPORT® 01

(Select sizes with DSST® ROF†)

## Quiet, High-Performance Tires



### FEATURES

- Jointless Band Technology™
- Aramid-reinforced bead
- Max Flange Shield®
- Silica tread
- Dunlop® Self-Supporting Technology (DSST)†\*

### BENEFITS

- Helps maintain the tire's shape and enables smooth performance at highway speeds
- Helps provide lower sidewall stiffness for enhanced responsiveness
- Helps protect rims from accidental curb damage
- Enhances dry and wet traction while helping to reduce rolling resistance
- Sidewall construction to help allow continued driving on a flat tire for up to 50 miles at 50 mph in normal conditions



Dry Traction



Ultra Wet Traction



Steering Responsiveness



Chosen as Original Equipment  
by Global Vehicle Manufacturers

† Refer to the run-flat owner's manual/limited warranty recommendations on operation at low or no air pressure. Tire pressure monitoring system required. Sold separately.

\* Only on SP Sport 01 DSST ROF.

## SP SPORT 01 SPECIFICATIONS

SIZE	SERVICE DESCRIPTION	LOAD RANGE	SIDEWALL	PRODUCT CODE	MATERIAL NUMBER	APPROVED RIM WIDTH (INS)	MEASURING RIM WIDTH (INS)	SECTION WIDTH (INS)	OVERALL DIAMETER (INS)	MAX LOAD (LBS)	TREAD DEPTH (IN 32NDS)	REVS/ MILE	UTQG	ORIGINAL EQUIPMENT FITMENT
<b>SP SPORT 01 DSST R0F</b>														
215/40R18	85Y	SL	BLT	265025660	209778	7.0 - 8.5	7.5	8.6	24.8	1,135	10	844	280 A A	BMW 1-Series (08-13)
*245/35R18	88Y	SL	BLT	265025654	209526	8.0 - 9.5	8.5	9.8	24.8	1,235	10	844	280 A A	BMW 1-Series (08-13)

\*Discontinued 2020

Do not attempt to mount 16" rim diameter tires on 16.5" rim diameter wheels; this may result in serious injury or death.

For more complete information, go to Tire-HQ™ at [www.tire-hq.com](http://www.tire-hq.com).

# COMMUTER TOURING



<b>Grandtrek® AT20</b>	<b>Grandtrek Touring® A/S</b>	<b>Grandtrek® ST30</b>	<b>SP® 31</b>	<b>Enasave®</b>
An Excellent Choice for Your Luxury SUV	Original Equipment Luxury SUV Tire	Original Equipment All-Season Truck and SUV Tire	H- and S-Rated All-Season Tire	Original Equipment on Select Import Vehicles

# COMMUTER TOURING TIRE SELECTOR CHART

	PASSENGER			CUV/LIGHT TRUCK				CUV				
	Signature I™ (Pg. 178)	SP® 31 (Pg. 179)	SP® 31 A.A.S (Pg. 179)	Enasave® (Pg. 180)	Grandtrek® AT20 (Pg. 182)	Grandtrek® PT20 (Pg. 183)	Grandtrek® PT21 (Pg. 183)	Grandtrek® ST30 (Pg. 184)	Grandtrek® ST20 (Pg. 185)	Grandtrek Touring® A/S (Pg. 186)	Grandtrek® PT2A (Pg. 187)	Grandtrek® PT3A (Pg. 187)
165/65R14				79S								
175/65R14		81S										
145/65R15				72H								
175/60R15				81H								
175/65R15		84S	84S									
195/55R15		84H										
195/65R15		*89S		89S								
205/55R16				91H								
215/70R16									*99S			
245/75R16					109S							
215/60R17	96T											
225/60R17									*98H			
225/65R17						102H		102H				
235/65R17							104H					
265/65R17					*110S							
265/70R17					113S							
225/60R18					*99H	100H		100H				
235/60R18							103H			102V		
265/70R18												116H
275/60R18												111H
285/60R18												116V, 114V
235/50R19										99H		
235/55R19							101V			101V		
255/50R19										107H		
265/55R19												109V
235/45R20										*100H		
285/50R20											*111V, 112V	
275/50R21												113V

\*Discontinued in 2020



# SIGNATURE II™

All-Season Grip and Contemporary Styling  
for Drivers Who Want Traction and a Sophisticated Look

FEATURES	BENEFITS
Optimized tread pattern	Helps promote long and even treadwear
VersaLoad Technology™	Helps provide consistent handling, ride comfort and treadwear in a wide range of load conditions
Evaqua Grooves™	Aid in effective water evacuation for all-season performance
Multi-directional siping	Helps provide effective grip for traction in wet and snow conditions
Sophisticated sidewall design	For enhanced on-vehicle appearance

## SIGNATURE II SPECIFICATIONS

SIZE	SERVICE DESCRIPTION	LOAD RANGE	SIDEWALL	PRODUCT CODE	MATERIAL NUMBER	APPROVED RIM WIDTH (INS)	MEASURING RIM WIDTH (INS)	SECTION WIDTH (INS)	OVERALL DIAMETER (INS)	MAX LOAD (LBS)	TREAD DEPTH (IN 32NDS)	REVS/ MILE	UTQG	ORIGINAL EQUIPMENT FITMENT
215/60R17	96T	SL	BSW	266004819	219563	6.0 - 7.5	6.5	8.7	27.2	1,565	10	768	620 A B	JEEP RENEGADE (15-21)

Do not attempt to mount 16" rim diameter tires on 16.5" rim diameter wheels; this may result in serious injury or death.

For more complete information, go to Tire-HQ™ at [www.tire-hq.com](http://www.tire-hq.com).



All-Season



Comfortable,  
Refined Handling



Chosen as Original Equipment  
by Global Vehicle Manufacturers



† See page 145 for complete details.

\* See Limited Warranty Brochure for complete details.



# SP<sup>®</sup> 31 SP<sup>®</sup> 31 A A/S

H- and S-Rated All-Season Tire



SP 31

SP 31 A A/S

## FEATURES

Asymmetric tread

Multi-Pitch Tread Design Technology™

Circumferential tread grooves

M+S-rated, all-season tread design

## BENEFITS

Helps provide a balance of wet and dry performance

Helps reduce noise for a quiet ride

Help evacuate water away from the footprint for excellent wet traction

Helps deliver all-season traction and wet handling

### SP 31 SPECIFICATIONS

SIZE	SERVICE DESCRIPTION	LOAD RANGE	SIDEWALL	PRODUCT CODE	MATERIAL NUMBER	APPROVED RIM WIDTH (INS)	MEASURING RIM WIDTH (INS)	SECTION WIDTH (INS)	OVERALL DIAMETER (INS)	MAX LOAD (LBS)	TREAD DEPTH (IN 32NDS)	REVS/ MILE	UTQG	ORIGINAL EQUIPMENT FITMENT
P175/65R14	81S	SL	BSW	265024566	200515	5.0 - 6.0	5	7	23	1,019	9	909	320 A B	
175/65R15	84S	SL	BSW	265024568	209091	5.0 - 6.0	5	7	24	1,102	9	871	320 A B	
P195/55R15	84H	SL	BSW	265024555	200516	5.0 - 6.0	5	7	23	1,019	9	909	320 A B	

### SP 31 A A/S SPECIFICATIONS

SIZE	SERVICE DESCRIPTION	LOAD RANGE	SIDEWALL	PRODUCT CODE	MATERIAL NUMBER	APPROVED RIM WIDTH (INS)	MEASURING RIM WIDTH (INS)	SECTION WIDTH (INS)	OVERALL DIAMETER (INS)	MAX LOAD (LBS)	TREAD DEPTH (IN 32NDS)	REVS/ MILE	UTQG	ORIGINAL EQUIPMENT FITMENT
175/65R15	84S	SL	BSW	263027501	214152	5.0 - 6.0	5	7	24	1,102	9	871	320 A B	HONDA FIT (13-14)

For more complete information, go to Tire-HQ™ at [www.tire-hq.com](http://www.tire-hq.com).



All-Season



Chosen as Original Equipment  
by Global Vehicle Manufacturers



# ENASAVE®

Original Equipment on Select Import Vehicles

## ENASAVE SPECIFICATIONS

SIZE	SERVICE DESCRIPTION	LOAD RANGE	SIDEWALL	PRODUCT CODE	MATERIAL NUMBER	APPROVED RIM WIDTH (INS)	MEASURING RIM WIDTH (INS)	SECTION WIDTH (INS)	OVERALL DIAMETER (INS)	MAX LOAD (LBS)	TREAD DEPTH (IN 32NDS)	REVS/ MILE	UTQG	ORIGINAL EQUIPMENT FITMENT
165/65R14	79S	SL	BSW	267028902	226033	4.5 - 6.0	5	7.9	24	963	9	871	340 A B	MITSUBISHI MIRAGE (14-19)
145/65R15	72H	SL	BSW	267028900	221613	4.0 - 5.0	4.5	5.9	22.4	783	8	933	340 A A	MITSUBISHI iMIEV (13-17)
175/60R15	81H	SL	BSW	267028901	221614	5.0 - 6.0	5	7	23.3	1,019	9	898	340 A A	MITSUBISHI iMIEV (13-17)
P195/65R15	89S	SL	BSW	267028904	231271	5.5 - 7.0	6	7.9	25	1,356	8	836	540 A B	TOYOTA PRIUS (16-18), TOYOTA PRIUS PRIME (17-20)
195/65R15	91S	SL	BLT	267028906	237646	5.5 - 7.0	6	7.91	25	1,356	8	836	340 A B	TOYOTA PRIUS (19-21)
205/55R16	91H	SL	BSW	267028905	236477	5.5 - 7.5	7	8.4	24.9	1,356	10	839	340 A B	TOYOTA COROLLA (19-21)

Do not attempt to mount 16" rim diameter tires on 16.5" rim diameter wheels; this may result in serious injury or death.

For more complete information, go to Tire-HQ™ at [www.tire-hq.com](http://www.tire-hq.com).



All-Season



Fuel Efficiency



Chosen as Original Equipment  
by Global Vehicle Manufacturers





# GRANDTREK® AT20

An Excellent Choice for Your Luxury SUV

## FEATURES

- VersaLoad Technology™

---

- Aggressive all-season tread design

---

- Multi-Pitch Tread Design Technology™

---

- Open shoulder design with deep lateral grooves and cross-cut sipes

---

- Bead apex design and Dimensionally Stable Polyester™

## BENEFITS

- Consistent handling, ride comfort and treadwear in a wide range of load conditions

---

- Helps grip and control in all-season conditions

---

- Helps reduce noise for a quiet ride

---

- Helps deliver all-season traction

---

- Help maintain tire uniformity for a smooth, comfortable ride

## GRANDTREK AT20 SPECIFICATIONS

SIZE	SERVICE DESCRIPTION	LOAD RANGE	SIDEWALL	PRODUCT CODE	MATERIAL NUMBER	APPROVED RIM WIDTH (INS)	MEASURING RIM WIDTH (INS)	SECTION WIDTH (INS)	OVERALL DIAMETER (INS)	MAX LOAD (LBS)	TREAD DEPTH (IN 32NDS)	REVS/ MILE	UTQG	ORIGINAL EQUIPMENT FITMENT
P245/75R16	109S	SL	BSL	290105537	190049	6.5 - 8.0	7	9.8	30.5	2,271	11	686	300 B B	TOYOTA TACOMA (13-15)
*P265/65R17	110S	SL	BSL	290105539	190081	7.5 - 9.5	8	10.7	30.6	2,337	11	684	300 B B	TOYOTA TACOMA (13-15)
P265/70R17	113S	SL	BSW	290105041	200475	7.0 - 9.0	8	10.7	31.7	2,535	11	660	300 B B	TOYOTA 4RUNNER (13-21), TOYOTA FJ CRUISER (13-14)
*P225/60R18	99H	SL	BSW	290105216	209855	6.0 - 8.0	6.5	9	28.6	1,709	10	730	300 B A	
P225/60R18	99H	SL	BSL	290105035	227553	6.0 - 8.0	6.5	9	28.6	1,709	10	730	300 B A	HONDA CRV (15-17)

\*Discontinued 2020

Do not attempt to mount 16" rim diameter tires on 16.5" rim diameter wheels; this may result in serious injury or death. Always maintain tire inflation pressure at levels recommended by the vehicle manufacturer as shown on the vehicle placard or in the owner's manual.

For more complete information, go to Tire-HQ™ at [www.tire-hq.com](http://www.tire-hq.com).

**NOTE: When replacing a vehicle's original equipment light truck tires with passenger car tires, the load on each replacement car tire must not exceed the maximum load stamped on the replacement car tire sidewall divided by 1.10.**



On-Road



Chosen as Original Equipment  
by Global Vehicle Manufacturers

\* See Limited Warranty Brochure for complete details.



# GRANDTREK® PT20

## Original Equipment All-Season SUV Tire

FEATURES	BENEFITS
Optimized tread pattern stiffness	Offers all-season traction and improved handling
Advanced tread performance	Provides improved fuel economy and wet performance
Multi-Pitch Tread Design Technology™	Reduces road noise

### GRANDTREK PT20 SPECIFICATIONS

SIZE	SERVICE DESCRIPTION	LOAD RANGE	SIDEWALL	PRODUCT CODE	MATERIAL NUMBER	APPROVED RIM WIDTH (INS)	MEASURING RIM WIDTH (INS)	SECTION WIDTH (INS)	OVERALL DIAMETER (INS)	MAX LOAD (LBS)	TREAD DEPTH (IN 32NDS)	REVS/ MILE	UTQG	ORIGINAL EQUIPMENT FITMENT
225/65R17	102H	SL	BLT	290008500	237605	6.0 - 8.0	6.5	9	28.5	1,874	10	733	360 B A	TOYOTA RAV4 (19-21)
225/60R18	100H	SL	BLT	290008501	237606	6.0 - 8.0	6.5	9	28.6	1,764	10	730	360 B A	TOYOTA RAV4 (19-21)

Always maintain tire inflation pressure at levels recommended by the vehicle manufacturer as shown on the vehicle placard or in the owner's manual.

For more complete information, go to Tire-HQ™ at [www.tire-hq.com](http://www.tire-hq.com).



On-Road



Chosen as Original Equipment  
by Global Vehicle Manufacturers

COMPUTER TOURING

# GRANDTREK® PT21

## Original Equipment All-Season SUV Tire

No Image Available

FEATURES	BENEFITS
Environmentally conscious lightweight design	Fuel efficiency
Advanced tread performance	Consistent handling and refined ride comfort

### GRANDTREK PT21 SPECIFICATIONS

SIZE	SERVICE DESCRIPTION	LOAD RANGE	SIDEWALL	PRODUCT CODE	MATERIAL NUMBER	APPROVED RIM WIDTH (INS)	MEASURING RIM WIDTH (INS)	SECTION WIDTH (INS)	OVERALL DIAMETER (INS)	MAX LOAD (LBS)	TREAD DEPTH (IN 32NDS)	REVS/ MILE	UTQG	ORIGINAL EQUIPMENT FITMENT
235/65R17	104H	SL	BLT	290016801	242423	6.5 - 8.5	7	9.5	29.1	1,984	9	719	360 B A	NISSAN ROGUE (21)
235/60R18	103H	SL	BLT	290016802	242424	6.5 - 8.5	7	9.5	29.1	1,929	8	719	360 B A	NISSAN ROGUE (21)
235/55R19	101V	SL	BLT	290016804	242425	6.5 - 8.5	7.5	9.7	29.2	1,819	8	717	360 B A	NISSAN ROGUE (21)

Always maintain tire inflation pressure at levels recommended by the vehicle manufacturer as shown on the vehicle placard or in the owner's manual.

For more complete information, go to Tire-HQ™ at [www.tire-hq.com](http://www.tire-hq.com).



On-Road



Chosen as Original Equipment  
by Global Vehicle Manufacturers



# GRANDTREK® ST30

Original Equipment All-Season Truck and SUV Tire

## FEATURES

M+S-rated all-season tread pattern

Asymmetric tread pattern

Circumferential tread grooves

Multi-Pitch Tread Design Technology™

Jointless Band Technology™

Black serrated sidewall and raised black letter design

## BENEFITS

Aids control in all-season conditions

Helps provide a balance of wet and dry performance

Help evacuate water away from the footprint for excellent wet traction

Helps reduce noise for a quiet ride

Helps maintain the tire's shape and enables smooth performance at highway speeds

Stylish appearance

## GRANDTREK ST30 SPECIFICATIONS

SIZE	SERVICE DESCRIPTION	LOAD RANGE	SIDEWALL	PRODUCT CODE	MATERIAL NUMBER	APPROVED RIM WIDTH (INS)	MEASURING RIM WIDTH (INS)	SECTION WIDTH (INS)	OVERALL DIAMETER (INS)	MAX LOAD (LBS)	TREAD DEPTH (IN 32NDS)	REVS/MILE	UTQG	ORIGINAL EQUIPMENT FITMENT
225/65R17	102H	SL	BSW	290126789	232633	6.0 - 8.0	6.5	9	28.5	1,874	10	733	360 A A	NISSAN ROGUE (16-18)
225/65R17	102H	SL	BSW	290126785	224122	6.0 - 8.0	6.5	9	28.5	1,874	9	733	360 A A	LEXUS NX (15-21), TOYOTA RAV4 (13-21)
225/60R18	100H	SL	BSW	290126787	223143	6.0 - 8.0	6.5	9	28.6	1,764	10	730	360 A A	NISSAN ROGUE (14-18)
225/60R18	100H	SL	BSW	290126788	229637	6.0 - 8.0	6.5	9	28.6	1,764	10	730	360 A A	NISSAN ROGUE HYBRID (16-21)
<b>GRANDTREK ST30 NRT</b>														
225/65R17	102H	SL	BLT	290126791	240594	6.0 - 8.0	6.5	9.0	28.5	1,874	10	733	360 A A	NISSAN ROGUE (19-20)

Always maintain tire inflation pressure at levels recommended by the vehicle manufacturer as shown on the vehicle placard or in the owner's manual.

For more complete information, go to Tire-HQ™ at [www.tire-hq.com](http://www.tire-hq.com).

**NOTE:** When replacing a vehicle's original equipment light truck tires with passenger car tires, the load on each replacement car tire must not exceed the maximum load stamped on the replacement car tire sidewall divided by 1.10.



On-Road



Chosen as Original Equipment  
by Global Vehicle Manufacturers



# GRANDTREK® ST20

Original Equipment All-Season Truck and SUV Tire

## FEATURES

- M+S-rated all-season tread pattern
- Circumferential tread grooves
- Advanced tread
- 5-Pitch Technology™
- Black serrated sidewall and raised black letter design

## BENEFITS

- Aids control in all-season conditions
- Help evacuate water away from the footprint for excellent wet traction
- Enhanced wet-weather performance
- Aids noise reduction for a quiet ride
- Stylish appearance

### GRANDTREK ST20 SPECIFICATIONS

SIZE	SERVICE DESCRIPTION	LOAD RANGE	SIDEWALL	PRODUCT CODE	MATERIAL NUMBER	APPROVED RIM WIDTH (INS)	MEASURING RIM WIDTH (INS)	SECTION WIDTH (INS)	OVERALL DIAMETER (INS)	MAX LOAD (LBS)	TREAD DEPTH (IN 32NDS)	REVS/ MILE	UTQG	ORIGINAL EQUIPMENT FITMENT
*215/70R16	99S	SL	BSW	290132910	176369	5.5 - 7.0	6.5	8.7	27.9	1,709	10	749	300 B B	MINI COOPER (13-14)
*P225/60R17	98H	SL	BSW	290139030	205083	6.0 - 8.0	6.5	9	27.6	1,653	10	756	300 B A	NISSAN ROGUE (13)

\*Discontinued 2020

Do not attempt to mount 16" rim diameter tires on 16.5" rim diameter wheels; this may result in serious injury or death.

Always maintain tire inflation pressure at levels recommended by the vehicle manufacturer as shown on the vehicle placard or in the owner's manual.

For more complete information, go to Tire-HQ™ at [www.tire-hq.com](http://www.tire-hq.com).

**NOTE: When replacing a vehicle's original equipment light truck tires with passenger car tires, the load on each replacement car tire must not exceed the maximum load stamped on the replacement car tire sidewall divided by 1.10.**



On-Road



Chosen as Original Equipment  
by Global Vehicle Manufacturers



# GRANDTREK TOURING® A/S

(Select sizes with DSST®†)

Original Equipment Luxury SUV Tire

FEATURES	BENEFITS
M+S-rated all-season tread pattern	Aids control in all-season conditions
Multi-Pitch Tread Design Technology™	Helps reduce noise for a quiet ride
Jointless Band Technology™	Helps maintain the tire's shape and enables smooth performance at highway speeds
VersaLoad Technology™	Consistent handling, ride comfort and treadwear in a wide range of load conditions
Silica tread	Enhances dry and wet traction while helping to reduce rolling resistance

## GRANDTREK TOURING A/S SPECIFICATIONS

SIZE	SERVICE DESCRIPTION	LOAD RANGE	SIDEWALL	PRODUCT CODE	MATERIAL NUMBER	APPROVED RIM WIDTH (INS)	MEASURING RIM WIDTH (INS)	SECTION WIDTH (INS)	OVERALL DIAMETER (INS)	MAX LOAD (LBS)	TREAD DEPTH (IN 32NDS)	REVS/ MILE	UTQG	ORIGINAL EQUIPMENT FITMENT
P235/60R18	102V	SL	BSW	290123503	209613	6.5 - 8.5	7	9.5	29.1	1,874	10	718	280 A A	LEXUS RX (13-15)
235/50R19	99H	SL	BLT	290123512	230191	6.5 - 8.5	7.5	9.7	28.3	1,709	10	738	200 A A	MERCEDES-BENZ GLK350 (13-15)
P235/55R19	101V	SL	VSB	290123502	209411	6.5 - 8.5	7.5	9.7	29.2	1,819	10	716	280 A A	LEXUS RX (13-15)
255/50R19	107H	XL	VSB	290123507	218487	7.0 - 9.0	8	10.4	29.1	2,149	10	718	200 A A	MERCEDES-BENZ M-CLASS (13-18)
*235/45R20	100H	XL	BLT	290123510	227602	7.5 - 9.0	8	9.3	28.4	1,764	10	739	200 A A	MERCEDES-BENZ GLK350 (13-15)

\*Discontinued 2020

Do not attempt to mount 16" rim diameter tires on 16.5" rim diameter wheels; this may result in serious injury or death.

Always maintain tire inflation pressure at levels recommended by the vehicle manufacturer as shown on the vehicle placard or in the owner's manual.

For more complete information, go to Tire-HQ™ at [www.tire-hq.com](http://www.tire-hq.com).

**NOTE: When replacing a vehicle's original equipment light truck tires with passenger car tires, the load on each replacement car tire must not exceed the maximum load stamped on the replacement car tire sidewall divided by 1.10.**



On-Road



Chosen as Original Equipment  
by Global Vehicle Manufacturers

† Refer to the run-flat owner's manual/limited warranty recommendations on operation at low or no air pressure. Tire pressure monitoring system required. Sold separately.

\*\* Only on Grandtrek Touring A/S DSST.





# GRANDTREK® PT2A

On-Road Luxury Performance with Off-Road Toughness

## FEATURES

- Multi-Pitch Tread Design Technology™
- Narrow centerline lug grooves
- Wide lug grooves

## BENEFITS

- Helps reduce noise for a quiet ride
- Help optimize noise reduction for a quiet ride
- Help provide traction in mud and snow

### GRANDTREK PT2A SPECIFICATIONS

SIZE	SERVICE DESCRIPTION	LOAD RANGE	SIDEWALL	PRODUCT CODE	MATERIAL NUMBER	APPROVED RIM WIDTH (INS)	MEASURING RIM WIDTH (INS)	SECTION WIDTH (INS)	OVERALL DIAMETER (INS)	MAX LOAD (LBS)	TREAD DEPTH (IN 32NDS)	REVS/ MILE	UTQG	ORIGINAL EQUIPMENT FITMENT
*P285/50R20	111V	SL	BSW	290122310	206327	8.0 - 10.0	9	11.7	31.3	2,043	10	669	360 A A	LEXUS LX (13-15)
285/50R20	112V	SL	SBL	290122311	231002	8.0 - 10.0	9	11.7	31.3	2,469	10	669	360 A A	LEXUS LX (16-21)

\*Discontinued 2020

Always maintain tire inflation pressure at levels recommended by the vehicle manufacturer as shown on the vehicle placard or in the owner's manual.

For more complete information, go to Tire-HQ™ at [www.tire-hq.com](http://www.tire-hq.com).

**NOTE:** When replacing a vehicle's original equipment light truck tires with passenger car tires, the load on each replacement car tire must not exceed the maximum load stamped on the replacement car tire sidewall divided by 1.10.



On-Road



Chosen as Original Equipment by Global Vehicle Manufacturers

COMMUTER TOURING



# GRANDTREK® PT3A

Original Equipment Luxury SUV Tire

## FEATURES

- Increased pattern stiffness
- Advanced tread design
- Narrow tread grooves

## BENEFITS

- Optimizes handling
- Provides improved fuel economy and wet performance
- Reduce road noise

### GRANDTREK PT3A SPECIFICATIONS

SIZE	SERVICE DESCRIPTION	LOAD RANGE	SIDEWALL	PRODUCT CODE	MATERIAL NUMBER	APPROVED RIM WIDTH (INS)	MEASURING RIM WIDTH (INS)	SECTION WIDTH (INS)	OVERALL DIAMETER (INS)	MAX LOAD (LBS)	TREAD DEPTH (IN 32NDS)	REVS/ MILE	UTQG	ORIGINAL EQUIPMENT FITMENT
275/50R21	113V	XL	SBL	290124400	231003	7.5 - 9.5	8.5	11.2	31.9	2,535	10	656	360 B A	LEXUS LX (16-21)

Always maintain tire inflation pressure at levels recommended by the vehicle manufacturer as shown on the vehicle placard or in the owner's manual.

For more complete information, go to Tire-HQ™ at [www.tire-hq.com](http://www.tire-hq.com).



On-Road



Chosen as Original Equipment by Global Vehicle Manufacturers

# GRANDTREK® AT23

Original Equipment All-Season Truck and SUV Tire



GRANDTREK AT23  
TREAD PATTERN



## FEATURES

M+S-rated all-season tread pattern

Circumferential tread grooves

Advanced tread

5-Pitch Technology™

## BENEFITS

Aids control in all-season conditions

Help evacuate water away from the footprint for excellent wet traction

Enhanced wet-weather performance

Aids noise reduction for a quiet ride

## GRANDTREK AT23 SPECIFICATIONS

SIZE	SERVICE DESCRIPTION	LOAD RANGE	SIDEWALL	PRODUCT CODE	MATERIAL NUMBER	APPROVED RIM WIDTH (INS)	MEASURING RIM WIDTH (INS)	SECTION WIDTH (INS)	OVERALL DIAMETER (INS)	MAX LOAD (LBS)	TREAD DEPTH (IN 32NDS)	REVS/ MILE	UTQG	ORIGINAL EQUIPMENT FITMENT
265/70R18	116H	SL	BSW	290014826	232659	7.0 - 9.0	8	10.7	32.6	2,756	11	641	360 A A	NISSAN ARMADA (17-21)
P275/60R18	111H	SL	BSW	290014824	185301	7.5 - 9.5	8	11	31	2,403	12	675	360 A A	
285/60R18	116V	SL	SBL	290014825	231001	8.0 - 10.0	8.5	11.5	31.5	2,756	11	664	360 A A	LEXUS LX (15-21)
P285/60R18	114V	SL	BSW	290014840	205267	8.0 - 10.0	8.5	11.5	31.5	2,601	11	663	360 A A	TOYOTA LAND CRUISER (13-15)
265/55R19	109V	SL	BLT	290014827	240077	7.5 - 9.5	8.5	10.91	30.5	2,271	9	685	360 B A	LEXUS GX (20-21)

Do not attempt to mount 16" rim diameter tires on 16.5" rim diameter wheels; this may result in serious injury or death. Always maintain tire inflation pressure at levels recommended by the vehicle manufacturer as shown on the vehicle placard or in the owner's manual.

For more complete information, go to Tire-HQ™ at [www.tire-hq.com](http://www.tire-hq.com).

**NOTE: When replacing a vehicle's original equipment light truck tires with passenger car tires, the load on each replacement car tire must not exceed the maximum load stamped on the replacement car tire sidewall divided by 1.10.**



On-Road



Chosen as Original Equipment  
by Global Vehicle Manufacturers

# MZ MK3 SPARE

## MZ MK3 SPARE SPECIFICATIONS

SIZE	SERVICE DESCRIPTION	LOAD RANGE	SIDEWALL	PRODUCT CODE	MATERIAL NUMBER	APPROVED RIM WIDTH (INS)	MEASURING RIM WIDTH (INS)	SECTION WIDTH (INS)	OVERALL DIAMETER (INS)	MAX LOAD (LBS)	TREAD DEPTH (IN 32NDS)	REVS/ MILE	UTQG	ORIGINAL EQUIPMENT FITMENT
T125/70D16	96M	SL	BL	267037809	233012	4.0 - 4.0	4	5.2	22.9	1,565	5	886		MAZDA 3 (13-20), MAZDA 5 (16-17), TOYOTA PRIUS (16-20)
T125/90D16	98M	SL	BL	266012187	232672	3.5 - 3.5	3.5	5	24.9	1,653	4	836		MAZDA CX-3 (15-20)
T135/90D16	102M	SL	BLT	267031059	240595	4.0 - 5.0	4.0	5.4	25.6	1,874	4	817		NISSAN JUKE (13-19), NISSAN QUEST (13-20), NISSAN ROGUE (19-20)
T145/70D17	106M	SL	BLT	266012172	233354	4.0 - 4.0	4	5.7	25	2,094	4	807		TOYOTA PRIUS (17-20), SUBARU BRZ (16-20), SUBARU WRX (14-20)

Do not attempt to mount 16" rim diameter tires on 16.5" rim diameter wheels; this may result in serious injury or death.

For more complete information, go to Tire-HQ™ at [www.tire-hq.com](http://www.tire-hq.com).



Chosen as Original Equipment  
by Global Vehicle Manufacturers

# WINTER



<b>SP Winter Sport 4D®</b>	<b>Winter Maxx® 2</b>	<b>Winter Maxx® SJ8</b>
Enhanced Grip and Performance in Winter Driving Conditions	A Confident Winter Traction Tire in Wet, Icy and Snowy Conditions, with Long-Lasting Performance	Strong Ice and Snow Performance for SUVs

# WINTER TIRE SELECTOR CHART

	PERFORMANCE						COMMUTER				LT/SUV			
	SP Winter Sport 4D® (Pg. 194)	SP Winter Sport 4D® with NoiseShield Technology® (Pg. 194)	SP Winter Sport 4D® ROF (Pg. 194)	SP Winter Sport 3D® (Pg. 196)	SP Winter Sport 3D® ROF (Pg. 197)	SP® Winter Sport M3 DSST® ROF (Pg. 198)	SP® Winter Sport 5 SUV (Pg. 199)	Winter Maxx® (Pg. 200)	Winter Maxx 2® (Pg. 202)	Winter Maxx® S.J.B (Pg. 204)	Grandtrek® S.J.B (Pg. 206)	Grandtrek® WT M3 (Pg. 207)	Grandtrek® WT M3 DSST® ROF (Pg. 207)	SP LT 60 (Pg. 208)
175/70R13								82T						
165/65R14								79T						
175/65R14								82T						
175/70R14								84T						
185/60R14								82T						
185/65R14								86T						
185/70R14								88T						
175/65R15								84T						
185/55R15								82T						
185/60R15								84T						
185/65R15								88T						
195/60R15								88T						
195/65R15								91T						
205/65R15								94T					*102T	
175/60R16					86H									
185/55R16								83T						
195/55R16					*87H			91T						
205/55R16						*91H		94T						
205/60R16								96T						
205/65R16								95T						
205/70R16										97Q				
215/55R16								97T						
215/60R16								99T						
215/65R16								98T	98R					
215/70R16									100R					
225/60R16								102T						
225/70R16									103R					
225/75R16									104R					
235/60R16									100R					
235/70R16									106R					
245/70R16									107R					
245/75R16									111R					
265/70R16									112R					
205/45R17			88V											
205/50R17				*93H				93T						
215/45R17								91T						
215/50R17								95T						
215/55R17				98H				94T						
215/60R17				96H				96T	96R					
225/45R17			91H					94T						
225/50R17	98H		94H			94H		98T						
225/55R17	101H		*97H		97H			101T	97R					

\*Discontinued in 2020

	PERFORMANCE						COMMUTER			LT/SUV				
	SP Winter Sport 4D® (Pg. 194)	SP Winter Sport 4D® with NoiseShield Technology® (Pg. 194)	SP Winter Sport 4D® ROF (Pg. 194)	SP Winter Sport 3D® (Pg. 195)	SP Winter Sport 3D® ROF (Pg. 197)	SP® Winter Sport M3 DSST® ROF (Pg. 198)	SP® Winter Sport 5 SUV (Pg. 199)	Winter Maxx® (Pg. 200)	Winter Maxx 2® (Pg. 202)	Winter Maxx® SJ6 (Pg. 204)	Grandtrek® SJ6 (Pg. 206)	Grandtrek® WT M3 (Pg. 207)	Grandtrek® WT M3 DSST® ROF (Pg. 207)	SP LT 60 (Pg. 208)
225/60R17									99T	99R				
225/65R17										102R				
235/45R17				*94H					97T					
235/55R17										99R				
235/60R17										102R				
235/65R17	*108H									108R				
245/65R17										107R				
245/70R17										110R				
255/45R17				98V										
265/65R17										112R				
265/70R17										115R				
215/55R18			95H											
225/40R18									92T					
225/45R18									95T					
225/55R18									98T	98R				
225/60R18										100R				
235/45R18									94T					
235/50R18	97V								101T	97R				
235/55R18										100R				
235/60R18										107R				
235/65R18										106R				
245/40R18				97V					97T					
245/45R18					100V				100T					
245/50R18			104V		100H									
245/60R18										105R				
255/55R18										109R				
265/45R18														
265/60R18										110R				
265/65R18										114R				
275/65R18										116R				
285/35R18				*101W										
235/35R19				91W										
235/40R19				96V										
235/45R19				99V										
235/50R19				99H, 103H										
235/55R19	101V									101R				
245/40R19								94W						
245/45R19				102V	102V				98T					
245/55R19										103R				
255/35R19				96V										
255/50R19	103V			*107H						107R				
265/50R19				110V										
265/55R19											109H			

\*Discontinued in 2020

# WINTER TIRE SELECTOR CHART

	PERFORMANCE						COMMUTER				LT/SUV			
	SP Winter Sport 4D® (Pg. 194)	SP Winter Sport 4D® with NoiseShield Technology® (Pg. 194)	SP Winter Sport 4D® ROF (Pg. 194)	SP Winter Sport 3D® (Pg. 196)	SP Winter Sport 3D® ROF (Pg. 197)	SP® Winter Sport M3 DSST® ROF (Pg. 198)	SP® Winter Sport 5 SUV (Pg. 199)	Winter Maxx® (Pg. 200)	Winter Maxx 2® (Pg. 202)	Winter Maxx® SJ8 (Pg. 204)	Grandtrek® SJ6 (Pg. 206)	Grandtrek® WT M3 (Pg. 207)	Grandtrek® WT M3 DSST® ROF (Pg. 207)	SP LT 60 (Pg. 208)
245/50R20										102R				
255/35R20				97V, 97W										
255/45R20				101V			105V							
255/50R20										109R				
265/35R20				99V										
265/40R20				104V										
265/45R20	*104V													
265/50R20										107R				
275/30R20				97W										
275/45R20				110V								*110V		
275/55R20										113R				
275/60R20										115R				
285/40R20							108V							
285/50R20										112R				
295/40R20	*106V													
275/30R21	98W	98W												
275/35R21				103W										
275/50R21										113R				

\*Discontinued in 2020

# SP WINTER SPORT 4D<sup>®</sup>

(Select sizes with ROF<sup>†</sup>/NoiseShield Technology<sup>®</sup>)

## Enhanced Grip and Performance in Winter Driving Conditions



### FEATURES

4D Sipe System

---

V-shape grooves and deep snow notches

---

Special tread compound

---

Low weight construction

### BENEFITS

Increased number of shoulder-area sipes helps enhance braking and acceleration on snow and ice

Self-interlocking sipes maintain tread block stiffness to help provide excellent handling

Transversal sipes help deliver improved lateral grip

Entire sipe system combines to create even pressure across the treadface, which helps increase snow handling performance and cornering grip

---

Help enhance snow traction and performance

---

Helps adhere to wet and icy surfaces

---

Helps lower rolling resistance for better performance



Severe Snow



Ice Traction



Ultra Wet Traction



Cornering Stability



Steering Responsiveness

<sup>†</sup> Refer to the run-flat owner's manual/limited warranty recommendations on operation at low or no air pressure. Tire pressure monitoring system required. Sold separately.



## SP WINTER SPORT 4D SPECIFICATIONS

SIZE	SERVICE DESCRIPTION	LOAD RANGE	SIDEWALL	PRODUCT CODE	MATERIAL NUMBER	APPROVED RIM WIDTH (INS)	MEASURING RIM WIDTH (INS)	SECTION WIDTH (INS)	OVERALL DIAMETER (INS)	MAX LOAD (LBS)	TREAD DEPTH (IN 32NDS)	REVS/ MILE
225/50R17	98H	XL	BLT	265029128	230252	6.0 - 8.0	7	9.2	25.9	1,653	10	807
225/55R17	101H	XL	BLT	265029130	230767	6.0 - 8.0	7	9.2	26.8	1,819	11	780
*235/65R17	108H	XL	BLT	265029111	223732	6.5 - 8.5	7	9.5	29.1	2,205	11	719
235/50R18	97V	SL	BLT	265029124	228011	6.5 - 8.5	7.5	9.7	27.3	1,609	11	766
235/55R19	101V	SL	BLT	265029118	226424	6.5 - 8.5	7.5	9.7	29.2	1,819	10	716
255/50R19	103V	SL	BLT	265029119	227164	7.0 - 9.0	8	10.4	29.1	1,929	10	718
*265/45R20	104V	SL	BLT	265029127	229731	8.5 - 10.0	9	10.5	29.4	1,984	11	712
*295/40R20	106V	SL	BLT	265029126	229730	10.0 - 11.5	10.5	11.9	29.3	2,094	10	714
275/30R21	98W	XL	BLT	265040801	237351	9.0 - 10.0	9.5	10.9	27.5	1,653	10	750
<b>SP WINTER SPORT 4D NST (NOISESHIELD TECHNOLOGY)</b>												
275/30R21	98W	XL	BLT	265040800	228135	9.0 - 10.0	9.5	10.9	27.5	1,653	10	750
<b>SP WINTER SPORT 4D ROF</b>												
205/45R17	88V	XL	BLT	265029120	227165	6.5 - 7.5	7	8.1	24.3	1,235	10	862
225/45R17	91H	SL	BLT	265029121	227166	7.0 - 8.5	7.5	8.9	25	1,356	10	837
225/50R17	94H	SL	BLT	265029113	223886	6.0 - 8.0	7	9.2	25.9	1,477	10	807
225/50R17	94H	SL	BLT	265029140	228013	6.0 - 8.0	7	9.2	25.9	1,477	10	807
*225/55R17	97H	SL	BLT	265029129	230731	6.0 - 8.0	7	9.2	26.8	1,609	10	781
215/55R18	95H	SL	BLT	265029141	228014	6.0 - 7.5	7	8.9	27.3	1,521	11	766
245/50R18	104V	XL	BLT	265029117	226516	7.0 - 8.5	7.5	10	27.7	1,984	9	755

\* Discontinued 2020

Do not attempt to mount 16" rim diameter tires on 16.5" rim diameter wheels; this may result in serious injury or death.

For more complete information, go to Tire-HQ™ at [www.tire-hq.com](http://www.tire-hq.com).



# SP WINTER SPORT 3D®

(Select sizes with ROF†)

Responsive Handling and Enhanced Winter Traction



## FEATURES

Active Traction Sipe System™

Directional tread design

Multi-Radius Tread Technology™

Jointless Band Technology™

Tread processed with reactive silica

## BENEFITS

Central-block “pulling” sipes help provide performance, traction and braking in ice and snow

Intermediate block sipes help provide enhanced lateral handling and control in wet and slushy conditions

Shoulder-area 3D sipes help provide enhanced grip on snow and ice, shoulder stability and excellent dry handling

Enhances wet handling and deep-water performance

Helps deliver superb dry handling while maintaining wet handling

Helps maintain the tire’s shape and enables smooth performance at highway speeds

Aids elasticity at lower temperatures while maintaining enhanced road contact and traction



Severe Snow



Ice Traction



Ultra Wet Traction



Cornering Stability



Steering Responsiveness

† Refer to the run-flat owner’s manual/limited warranty recommendations on operation at low or no air pressure. Tire pressure monitoring system required. Sold separately.

## SP WINTER SPORT 3D SPECIFICATIONS

SIZE	SERVICE DESCRIPTION	LOAD RANGE	SIDEWALL	PRODUCT CODE	MATERIAL NUMBER	APPROVED RIM WIDTH (INS)	MEASURING RIM WIDTH (INS)	SECTION WIDTH (INS)	OVERALL DIAMETER (INS)	MAX LOAD (LBS)	TREAD DEPTH (IN 32NDS)	REVS/ MILE
*205/50R17	93H	XL	BLT	265024621	225606	5.5 - 7.5	6.5	8.4	25.1	1,433	10	832
215/55R17	98H	XL	BLT	265024759	215950	6.0 - 7.5	7	8.9	26.3	1,653	11	795
215/60R17	96H	SL	BLT	265024629	227940	6.0 - 7.5	6.5	8.7	27.2	1,565	11	769
*235/45R17	94H	SL	BLT	265024725	216177	7.5 - 9.0	8	9.3	25.4	1,477	10	827
235/65R17	104H	SL	BLT	265024628	223451	6.5 - 8.5	7	9.5	29.1	2,205	10	719
255/45R17	98V	SL	BSW	265024718	212593	8.0 - 9.5	8.5	10	26.1	1,653	8	801
245/40R18	97V	XL	BLT	265024758	215949	8.0 - 9.5	8.5	9.8	25.7	1,609	10	813
*285/35R18	101W	XL	BLT	265024730	220029	9.5 - 11.0	10	11.4	25.9	1,819	10	807
235/35R19	91W	SL	BLT	265024623	206324	8.0 - 9.5	8.5	9.5	25.5	1,356	10	820
235/40R19	96V	XL	BLT	265024619	224592	8.0 - 9.5	8.5	9.5	26.4	1,565	10	791
235/45R19	99V	XL	BLT	265024727	220045	7.5 - 9.0	8	9.3	27.4	1,709	11	763
235/50R19	99H	SL	BLT	265024720	215661	6.5 - 8.5	7.5	9.7	28.3	1,709	10	739
235/50R19	103H	XL	BLT	265024768	217664	6.5 - 8.5	7.5	9.7	28.3	1,929	10	739
245/45R19	102V	XL	BLT	265024630	234543	7.5 - 9.0	8	9.6	27.7	1,874	10	755
255/35R19	96V	XL	BLT	265024766	217586	8.5 - 10.0	9	10.2	26	1,565	10	803
*255/50R19	107H	XL	BLT	265024626	220371	7.0 - 9.0	8	10.4	29.1	2,149	11	718
265/50R19	110V	XL	BLT	265024770	217666	7.5 - 9.5	8.5	10.9	29.5	2,337	10	709
255/35R20	97W	XL	BLT	265024731	222494	8.5 - 10.0	9	10.2	27	1,609	10	774
255/35R20	97V	XL	BLT	265024733	225834	8.5 - 10.0	9	10.2	27	1,609	9	773
255/45R20	101V	SL	BLT	265024627	221471	8.0 - 9.5	8.5	10	29.1	1,819	10	719
265/35R20	99V	XL	BLT	265024728	220046	9.0 - 10.5	9.5	10.7	27.3	1,709	10	765
265/40R20	104V	XL	BLT	265024769	217665	9.0 - 10.5	9.5	10.7	28.4	1,984	10	737
275/30R20	97W	XL	BLT	265024772	219917	9.0 - 10.0	9.5	10.9	26.5	1,609	10	788
275/45R20	110V	XL	BLT	265024771	217733	8.5 - 10.5	9	10.7	29.8	2,337	10	702
275/35R21	103W	XL	BLT	265024618	222512	9.0 - 11.0	9	10.9	28.5	1,929	10	732
<b>SP WINTER SPORT 3D ROF</b>												
175/60R16	86H	XL	BLT	265025062	226981	5.0 - 6.0	5	7	24.3	1,168	11	862
195/55R16	87H	SL	BLT	265025052	220485	5.5 - 7.0	6	7.9	24.4	1,201	11	856
225/55R17	97H	SL	BLT	265025059	217732	6.0 - 8.0	7	9.2	26.8	1,609	11	780
245/45R18	100V	XL	BLT	265025058	217525	7.5 - 9.0	8	9.6	26.7	1,764	10	784
245/50R18	100H	SL	BLT	265025056	204617	7.0 - 8.5	7.5	10	27.7	1,764	10	755
245/45R19	102V	XL	BLT	265025051	210622	7.5 - 9.0	8	9.6	27.7	1,874	10	755

\*Discontinued 2020

Do not attempt to mount 16" rim diameter tires on 16.5" rim diameter wheels; this may result in serious injury or death.

For more complete information, go to Tire-HQ™ at [www.tire-hq.com](http://www.tire-hq.com).



# SP<sup>®</sup> WINTER SPORT M3

(Select sizes with DSST<sup>®</sup> ROF<sup>†</sup>)

A Winter Performance Tire, OE-Approved for Some of the World's Finest Vehicles

## FEATURES

Directional tread pattern and high-density sipes

Max Flange Shield<sup>®</sup> (on select sizes)

Dunlop<sup>®</sup> Self-Supporting Technology (DSST)<sup>†\*</sup>

## BENEFITS

Help handling in adverse winter conditions

Helps protect rims from accidental curb damage

Sidewall construction to help allow continued driving on a flat tire for up to 50 miles at 50 mph in normal conditions

## SP WINTER SPORT M3 SPECIFICATIONS

SIZE	SERVICE DESCRIPTION	LOAD RANGE	SIDEWALL	PRODUCT CODE	MATERIAL NUMBER	APPROVED RIM WIDTH (INS)	MEASURING RIM WIDTH (INS)	SECTION WIDTH (INS)	OVERALL DIAMETER (INS)	MAX LOAD (LBS)	TREAD DEPTH (IN 32NDS)	REVS/MILE
<b>SP WINTER SPORT M3 DSST ROF</b>												
*205/55R16	91H	SL	BSW	264025855	201720	5.5 - 7.5	6.5	8.4	24.9	1,356	11	839
*225/50R17	94H	SL	BSW	264025850	201719	6.0 - 8.0	7	9.2	25.9	1,477	11	807

\*Discontinued 2020

Do not attempt to mount 16" rim diameter tires on 16.5" rim diameter wheels; this may result in serious injury or death.

For more complete information, go to Tire-HQ<sup>™</sup> at [www.tire-hq.com](http://www.tire-hq.com).



<sup>†</sup> Refer to the run-flat owner's manual/limited warranty recommendations on operation at low or no air pressure. Tire pressure monitoring system required. Sold separately.

\* Only on SP Winter Sport M3 DSST ROF.

# WINTER SPORT 5 SUV

The Grip Your SUV Needs on Unforeseen Winter Roads



## FEATURES

Optimized geometry leading to increased block rigidity and therefore uniform pressure distribution

AquaPlaning Defense (water and slush)

Optimized weight distribution in the tire

## BENEFITS

Enhances performance on snow-covered roads

Volume of water that can be evacuated is increased

Improves fuel efficiency

## WINTER SPORT 5 SUV SPECIFICATIONS

SIZE	SERVICE DESCRIPTION	LOAD RANGE	SIDEWALL	PRODUCT CODE	MATERIAL NUMBER	APPROVED RIM WIDTH (INS)	MEASURING RIM WIDTH (INS)	SECTION WIDTH (INS)	OVERALL DIAMETER (INS)	MAX LOAD (LBS)	TREAD DEPTH (IN 32NDS)	REVS/MILE
255/45R20	105V	XL	BLT	265031701	233291	8.0 - 9.5	8.5	10	29.1	2,039	10	719
285/40R20	108V	XL	BLT	265031700	233180	9.5 - 11.0	10	11.4	28.9	2,205	10	721

For more complete information, go to Tire-HQ™ at [www.tire-hq.com](http://www.tire-hq.com).



Severe Snow



Ice Traction



Cornering Stability



Steering Responsiveness



# WINTER MAXX®

Excellent Ice Grip for Passenger Vehicles

## FEATURES

Maxx Sharp Edge with Miura-Ori Sipes

Nano-Fit Rubber

Wide grooves and lugs

Asymmetric tread design

## BENEFITS

Higher blade density helps prevent block distortion and increase tread-to-ice contact

Combines flexibility and rigidity to help rubber tread adhere to the ice surface

Help improve snow traction and wet handling

Helps enhance handling in snow, wet and dry conditions

## WINTER MAXX ROF† SPECIFICATIONS

SIZE	SERVICE DESCRIPTION	LOAD RANGE	SIDEWALL	PRODUCT CODE	MATERIAL NUMBER	APPROVED RIM WIDTH (INS)	MEASURING RIM WIDTH (INS)	SECTION WIDTH (INS)	OVERALL DIAMETER (INS)	MAX LOAD (LBS)	TREAD DEPTH (IN 32NDS)	REVS/ MILE
245/40RF19	94W	SL	BSW	266029745	226568	8.0 - 9.5	8.5	9.8	26.9	1,477	12	782

Do not attempt to mount 16" rim diameter tires on 16.5" rim diameter wheels; this may result in serious injury or death.

For more complete information, go to Tire-HQ™ at [www.tire-hq.com](http://www.tire-hq.com).



Severe Snow



Ice Traction



Ultra Wet Traction



Cornering Stability

† Refer to the run-flat owner's manual/limited warranty recommendations on operation at low or no air pressure. Tire pressure monitoring system required. Sold separately.



# WINTER MAXX® 2

A Confident Winter Traction Tire in Wet, Icy and Snowy Conditions,  
with Long-Lasting Performance



## FEATURES

- MAXX Grip Pattern

---

- Contact pressure distribution

---

- Large water drainage grooves

---

- Highly functional polymers

## BENEFITS

- Helps improve traction on snow

---

- Increases contact area for more stability in turns

---

- Flush away water for improved stability in wet and slushy conditions

---

- Help maintain performance throughout the life of the tire



Severe Snow



Ice Traction



Ultra Wet  
Traction



Cornering  
Stability

† See page 145 for complete details.



## WINTER MAXX 2 SPECIFICATIONS

SIZE	SERVICE DESCRIPTION	LOAD RANGE	SIDEWALL	PRODUCT CODE	MATERIAL NUMBER	APPROVED RIM WIDTH (INS)	MEASURING RIM WIDTH (INS)	SECTION WIDTH (INS)	OVERALL DIAMETER (INS)	MAX LOAD (LBS)	TREAD DEPTH (IN 32NDS)	REVS/MILE
175/70R13	82T	SL	BSW	266016600	234386	4.5 - 6.0	5	7	22.7	1,047	11	921
165/65R14	79T	SL	BSW	266016603	234389	5.0 - 6.0	5	7	23	963	11	910
175/65R14	82T	SL	BSW	266016604	234431	5.0 - 6.0	5	7	23	1047	11	910
175/70R14	84T	SL	BSW	266016601	234387	4.5 - 6.0	5	7	23.7	1,102	11	882
185/60R14	82T	SL	BSW	266016606	234433	5.0 - 6.5	5.5	7.5	22.8	1,047	11	917
185/65R14	86T	SL	BSW	266016605	234432	5.0 - 6.5	5.5	7.4	23.5	1,168	11	889
185/70R14	88T	SL	BSW	266016602	234388	4.5 - 6.0	5.5	7.4	24.3	1,235	11	860
175/65R15	84T	SL	BSW	266016607	234434	5.0 - 6.0	5	7	24	1,102	11	871
185/55R15	82T	SL	BSW	266016613	234440	5.0 - 6.5	5	7.6	23	1,047	11	908
185/60R15	84T	SL	BSW	266016611	234438	5.0 - 6.5	5.5	7.5	23.8	1,102	11	880
185/65R15	88T	SL	BSW	266016608	234435	5.0 - 6.5	5.5	7.4	24.5	1,235	11	855
195/60R15	88T	SL	BSW	266016612	234439	5.5 - 7.0	6	7.9	24.2	1,235	11	864
195/65R15	91T	SL	BSW	266016609	234436	5.5 - 7.0	6	7.9	25	1,356	11	836
205/65R15	94T	SL	BSW	266016610	234437	5.5 - 7.5	6	8.3	25.5	1,477	11	820
185/55R16	83T	SL	BSW	266016619	234453	5.0 - 6.5	6	7.6	24.2	1,074	11	870
195/55R16	91T	XL	BSW	266016620	234454	5.5 - 7.0	6	7.9	24.4	1,356	11	856
205/55R16	94T	XL	BSW	266016621	234455	5.5 - 7.5	6.5	8.4	24.9	1,477	11	840
205/60R16	96T	XL	BSW	266016616	234300	5.5 - 7.5	6	8.2	25.7	1,565	11	813
205/65R16	95T	SL	BSW	266016614	234297	5.5 - 7.5	6	8.2	26.5	1,521	11	820
215/55R16	97T	XL	BSW	266016630	234456	6.0 - 7.5	7	8.9	25.3	1,609	11	827
215/60R16	99T	XL	BSW	266016617	234451	6.0 - 7.5	6.5	8.7	26.1	1,709	11	801
215/65R16	98T	SL	BSW	266016615	234298	6.0 - 7.5	6.5	8.7	27	1,653	11	774
225/60R16	102T	XL	BSW	266016618	234452	6.0 - 8.0	6.5	9	26.6	1,874	11	786
205/50R17	93T	XL	BSW	266016627	234464	5.5 - 7.5	6.5	8.4	25.1	1,433	11	832
215/45R17	91T	XL	BSW	266016631	234467	7.0 - 8.0	7	8.4	24.7	1,356	11	846
215/50R17	95T	XL	BSW	266016628	234465	6.0 - 7.5	7	8.9	25.5	1,521	11	820
215/55R17	94T	SL	BSW	266016625	234462	6.0 - 7.5	7	8.9	26.3	1,477	11	768
215/60R17	96T	SL	BSW	266016623	234450	6.0 - 7.5	6.5	8.7	27.2	1,565	11	769
225/45R17	94T	XL	BSW	266016632	234468	7.0 - 8.5	7.5	8.9	25	1,477	11	837
225/50R17	98T	XL	BSW	266016629	234466	6.0 - 8.0	7	9.2	25.9	1,653	11	807
225/55R17	101T	XL	BSW	266016626	234463	6.0 - 8.0	7	9.2	26.8	1,819	11	781
225/60R17	99T	SL	BSW	266016624	234461	6.0 - 8.0	7	9.2	27.8	1,709	11	752
235/45R17	97T	XL	BSW	266016633	234469	7.5 - 9.0	8	9.3	25.4	1,609	11	824
225/40R18	92T	XL	BSW	266016639	234457	7.5 - 9.0	8	9.1	25.1	1,389	11	833
225/45R18	95T	XL	BSW	266016636	234472	7.0 - 8.5	7.5	8.9	25.9	1,521	11	807
225/55R18	98T	SL	BSW	266016634	234470	6.0 - 8.0	7	9.2	27.8	1,653	11	752
235/45R18	94T	SL	BSW	266016637	234473	6.5 - 8.5	7.5	9.7	26.7	1,477	11	784
235/50R18	101T	XL	BSW	266016635	234471	6.5 - 8.5	7.5	9.7	27.3	1,819	11	766
245/40R18	97T	XL	BSW	266016640	234458	8.0 - 9.5	8.5	9.8	25.7	1,609	12	812
245/45R18	100T	XL	BSW	266016638	234474	7.5 - 9.0	8	9.6	27	1,764	12	774
245/45R19	98T	SL	BSW	266016641	234459	7.5 - 9.0	8	9.6	27.7	1,653	12	755

Do not attempt to mount 16" rim diameter tires on 16.5" rim diameter wheels; this may result in serious injury or death.

For more complete information, go to Tire-HQ™ at [www.tire-hq.com](http://www.tire-hq.com).

# WINTER MAXX® SJ8

Strong Ice and Snow Performance



## FEATURES

Nano-Fit Rubber

Maxx Sharp Edge with Miura-Ori Sipes

Optimal groove patterns

## BENEFITS

Combines flexibility and rigidity to help rubber tread adhere to ice surface

Offers higher blade density to help prevent block distortion and increase tread-to-ice contact

Enhance grip on snow surface and help performance in wet conditions



Severe Snow



Ice Traction



Ultra Wet  
Traction



Cornering  
Stability

† See page 145 for complete details.

WINTER MAXX SJ8 SPECIFICATIONS

SIZE	SERVICE DESCRIPTION	LOAD RANGE	SIDEWALL	PRODUCT CODE	MATERIAL NUMBER	APPROVED RIM WIDTH (INS)	MEASURING RIM WIDTH (INS)	SECTION WIDTH (INS)	OVERALL DIAMETER (INS)	MAX LOAD (LBS)	TREAD DEPTH (IN 32NDS)	REVS/MILE
215/65R16	98R	SL	BSW	290124106	230047	6.0 - 7.5	6.5	8.7	27	1,653	14	774
215/70R16	100R	SL	BSW	290124101	230042	5.5 - 7.0	6.5	8.7	27.9	1,764	14	749
225/70R16	103R	SL	BSW	290124102	230043	6.0 - 7.5	6.5	9	28.4	1,929	14	735
225/75R16	104R	SL	BSW	290124100	230041	6.0 - 7.5	6	8.8	29.3	1,984	14	714
235/60R16	100R	SL	BSW	290124107	230048	6.5 - 8.5	7	9.5	27.1	1,764	14	772
235/70R16	106R	SL	BSW	290124103	230044	6.0 - 8.0	7	9.5	29	2,094	14	721
245/70R16	107R	SL	BSW	290124104	230045	6.5 - 8.0	7	9.8	29.5	2,149	14	708
245/75R16	111R	SL	BSW	290124133	232398	6.5 - 8.0	7	9.8	30.5	2,403	14	685
265/70R16	112R	SL	BSW	290124105	230046	7.0 - 9.0	8	10.7	30.6	2,469	14	682
215/60R17	96R	SL	BSW	290124112	230053	6.0 - 8.0	6.5	9	27.6	1,565	14	756
225/55R17	97R	SL	BSW	290124115	230056	6.0 - 8.0	7	9.2	28.8	1,609	14	781
225/60R17	99R	SL	BSW	290124113	230054	6.0 - 8.0	6.5	9	27.6	1,709	14	756
225/65R17	102R	SL	BSW	290124108	230049	6.0 - 8.0	6.5	9	28.5	1,874	14	733
235/55R17	99R	SL	BSW	290124116	230057	6.5 - 8.5	7.5	9.7	27.2	1,709	14	769
235/60R17	102R	SL	BSW	290124114	230055	6.5 - 8.5	7	9.5	28.1	1,874	14	744
235/65R17	108R	XL	BSW	290124109	230050	6.5 - 8.5	7	9.5	29.1	2,205	14	719
245/65R17	107R	SL	BSW	290124110	230051	7.0 - 8.5	7	9.8	29.5	2,149	14	708
245/70R17	110R	SL	BSW	290124134	232399	6.5 - 8.0	7	9.8	30.6	2,337	14	683
265/65R17	112R	SL	BSW	290124111	230052	7.5 - 9.5	8	10.7	30.6	2,469	14	684
265/70R17	115R	SL	BSW	290124135	232400	7.0 - 9.0	8	10.7	31.7	2,679	14	659
225/55R18	98R	SL	BSW	290124121	230062	6.0 - 8.0	7	9.2	27.8	1,653	14	753
225/60R18	100R	SL	BSW	290124138	232423	6.0 - 8.0	6.5	9	28.6	1,764	14	731
235/50R18	97R	SL	BSW	290124124	230065	6.5 - 8.5	7.5	9.7	27.3	1,609	14	766
235/55R18	100R	SL	BSW	290124122	230063	6.5 - 8.5	7.5	9.7	28.2	1,764	14	742
235/60R18	107R	XL	BSW	290124118	230059	6.5 - 8.5	7	9.5	29.1	2,149	14	718
235/65R18	106R	SL	BSW	290124117	230058	6.5 - 8.5	7	9.5	30	2,094	14	696
245/60R18	105R	SL	BSW	290124119	230060	7.0 - 8.5	7	9.8	29.6	2,039	14	707
255/55R18	109R	XL	BSW	290124123	230064	7.0 - 9.0	8	10.4	29	2,271	14	720
265/60R18	110R	SL	BSW	290124120	230061	7.5 - 9.5	8	10.7	30.5	2,337	14	685
265/65R18	114R	SL	BSW	290124136	232421	7.5 - 9.5	8	10.7	31.5	2,601	14	663
275/65R18	116R	SL	BSW	290124137	232422	7.5 - 9.5	8	11	32.1	2,756	14	651
235/55R19	101R	SL	BSW	290124125	230066	6.5 - 8.5	7.5	9.7	29.2	1,819	14	716
245/55R19	103R	SL	BSW	290124126	230067	7.0 - 8.5	7.5	10	29.7	1,929	14	705
255/50R19	107R	XL	BSW	290124127	230068	7.0 - 9.0	8	10.4	29.1	2,149	14	718
245/50R20	102R	SL	BSW	290124128	230069	7.0 - 8.5	7.5	10	29.7	1,874	14	704
255/50R20	109R	XL	BSW	290124129	230070	7.0 - 9.0	8	10.9	30.1	2,271	14	695
265/50R20	107R	SL	BSW	290124130	230071	7.5 - 9.5	8.5	10.9	30.5	2,149	14	686
275/55R20	113R	SL	BSW	290124140	232425	7.5 - 9.5	8.5	11.2	31.9	2,535	14	655
275/60R20	115R	SL	BSW	290124139	232424	7.5 - 9.5	8	11	33	2,679	14	633
285/50R20	112R	SL	BSW	290124131	230072	8.0 - 10.0	9	11.7	31.3	2,469	14	669
275/50R21	113R	XL	BSW	290124132	230942	7.5 - 9.5	8.5	11.2	31.9	2,535	14	655

Do not attempt to mount 16" rim diameter tires on 16.5" rim diameter wheels; this may result in serious injury or death.

For more complete information, go to Tire-HQ™ at [www.tire-hq.com](http://www.tire-hq.com).



# GRANDTREK® SJ6

## Powerful Traction on Ice and Snow

### FEATURES

Zigzag grooves in the center create strong twin snow pillars

Optimized groove distribution and tread design

Special glass fiber-reinforced tread

Optimized mold shape and ply line

Special tread design

Stylish sidewall design

### BENEFITS

Help provide powerful traction and braking in snowy conditions

Help provide quiet ride on dry road conditions and even wear

Helps provide outstanding grip on ice

Help provide consistent contact patch at highway speeds

Creates a wide footprint to help provide enhanced grip on ice and longer life

Great appearance

### GRANDTREK SJ6 SPECIFICATIONS

SIZE	SERVICE DESCRIPTION	LOAD RANGE	SIDEWALL	PRODUCT CODE	MATERIAL NUMBER	APPROVED RIM WIDTH (INS)	MEASURING RIM WIDTH (INS)	SECTION WIDTH (INS)	OVERALL DIAMETER (INS)	MAX LOAD (LBS)	TREAD DEPTH (IN 32NDS)	REVS/MILE
205/70R16	97Q	SL	BSW	290126541	198338	5.0 - 7.0	6	8.2	27.3	1,609	14	766

Do not attempt to mount 16" rim diameter tires on 16.5" rim diameter wheels; this may result in serious injury or death.

Always maintain tire inflation pressure at levels recommended by the vehicle manufacturer as shown on the vehicle placard or in the owner's manual.

For more complete information, go to Tire-HQ™ at [www.tire-hq.com](http://www.tire-hq.com).



Severe Snow



Ice Traction



Ultra Wet Traction



Cornering Stability



# GRANDTREK® WT M3

(Select sizes with DSST® ROF†)

## Winter Performance Tire for Luxury SUVs

FEATURES	BENEFITS
High-performance winter traction	Powerful traction for all weather conditions
Directional tread pattern with high-density sipes	Handling in winter conditions
Lateral zigzag sipes and independent tread blocks	Help bite through ice and snow
High-density sipes and increased contact area	Enhance ice grip and tread life
Dunlop® Self-Supporting Technology (DSST)†	Sidewall construction to help allow continued driving on a flat tire for up to 50 miles at 50 mph in normal conditions

### GRANDTREK WT M3 SPECIFICATIONS

SIZE	SERVICE DESCRIPTION	LOAD RANGE	SIDEWALL	PRODUCT CODE	MATERIAL NUMBER	APPROVED RIM WIDTH (INS)	MEASURING RIM WIDTH (INS)	SECTION WIDTH (INS)	OVERALL DIAMETER (INS)	MAX LOAD (LBS)	TREAD DEPTH (IN 32NDS)	REVS/MILE
265/55R19	109H	SL	BLT	291121927	231341	7.5 - 9.5	8.5	10.9	30.5	2,271	11	685
*275/45R20	110V	XL	BLT	291121936	201956	8.5 - 10.5	9	10.7	29.8	2,337	11	702
<b>GRANDTREK WT M3 DSST ROF</b>												
*255/55R18	109H	XL	BSW	290122296	201954	7.0 - 9.0	8	10.4	29	2,271	11	720

\*Discontinued 2020

Always maintain tire inflation pressure at levels recommended by the vehicle manufacturer as shown on the vehicle placard or in the owner's manual.

For more complete information, go to Tire-HQ™ at [www.tire-hq.com](http://www.tire-hq.com).



Severe Snow



Ice Traction



Cornering Stability



Steering Responsiveness

# SP LT 60

Excellent Rain, Snow and Mud Traction for Winter Conditions

## SP LT 60 SPECIFICATIONS

SIZE	SERVICE DESCRIPTION	LOAD RANGE	SIDEWALL	PRODUCT CODE	MATERIAL NUMBER	APPROVED RIM WIDTH (INS)	MEASURING RIM WIDTH (INS)	SECTION WIDTH (INS)	OVERALL DIAMETER (INS)	MAX LOAD (LBS)	TREAD DEPTH (IN 32NDS)	REVS/ MILE
*205/65R15	102T	SL	BLT	291105050	229716	5.5 - 7.5	6	8.2	25.5	1,875	12	821

\*Discontinued 2020

Always maintain tire inflation pressure at levels recommended by the vehicle manufacturer as shown on the vehicle placard or in the owner's manual.

For more complete information, go to Tire-HQ™ at [www.tire-hq.com](http://www.tire-hq.com).



## DUNLOP® OE FITMENTS



### The Right Style

Having Dunlop tires is a statement that says you care about the way your tires make your car look as much as you care about its performance aspects.

Many vehicle manufacturers realize this about Dunlop tires and have them as original equipment on premium brands like Lexus and Porsche. Customers who value style and performance will often use Dunlop for replacement tires, so the following charts are intended to help you help them make the right choice.



# DUNLOP® OE FITMENTS



# OE FITMENT GUIDE

## **Dunlop®. Original Equipment Fitments to Drive Shopper Traffic.**

OE fitments are the reason why consumers will come knocking on your door. With fitments on the most desired models from many of the world's major manufacturers, Dunlop is the right brand for car, truck and sport utility vehicle owners.

### **IMPORTANT:**

#### **Dunlop's Original Equipment Limited Warranty**

Dunlop dealers are seeing more replacement business than ever before from our growing list of OE fitments. It's essential that you understand our Original Equipment Limited Warranty Policy. For complete details see the Original Equipment Limited Warranty, Tire Care and Maintenance Guide brochure.

This policy seeks to accommodate the new vehicle buyer and assist in satisfying the Dunlop customer. Should a customer encounter extenuating circumstances, they can call the Dunlop Customer Assistance Center at 1-800-321-2136. The offices are open from 8:30 a.m. until 5:00 p.m. EST, Monday through Friday.



VEHICLE MAKE	VEHICLE MODEL	TIRE SIZE SERVICE DESCR.	FRONT/ REAR	PRODUCT CODE	TIRE LINE	SIDEWALL DESCRIPTION	VEHICLE MODEL YEAR					2019	2020	2021
							2013	2014	2015	2016	2017			
<b>AUDI</b>														
	A4 / A5	255/35ZR19 96Y XL		265023729	SP SPORT MAXX GT	BLT	X	X	X	X	X			
	S5	265/30ZR20 94Y XL		265029901	SPORT MAXX RT NST	BLT						X	X	X
	A7 / RS7	265/35R20 99Y XL		265023812	SP SPORT MAXX GT	BLT	X	X	X	X	X			
	A8	275/35ZR21 103Y XL		265023825	SP SPORT MAXX GT	BLT	X	X	X					
		275/35ZR21 103Y XL		265040900	SP SPORT MAXX GT NST	BLT			X	X	X	X		
	Q5	255/40R21 102Y XL		265023856	SP SPORT MAXX GT	BLT		X	X	X	X	X		
	Q7	295/35R21 107Y XL		265023776	SP SPORT MAXX	BSW	X	X	X					
<b>BENTLEY</b>														
	MULSANNE	265/45ZR20 108Y XL		265040901	SP SPORT MAXX GT NST	BLT	X	X	X	X	X	X	X	X
		265/40ZR21 105Y XL		265023806	SP SPORT MAXX GT	BLT	X	X	X	X				
<b>BMW</b>														
	5 SERIES / 6 SERIES	245/45R18 100Y XL		265023033	SPORT MAXX RT2	BLT						X	X	X
		245/40R19 94Y	F	265023807	SP SPORT MAXX GT ROF	BLT	X	X	X	X	X			
		275/35R19 96Y	R	265023808	SP SPORT MAXX GT ROF	BLT	X	X	X	X	X			
		245/35R20 95Y XL	F	265027405	SP SPORT MAXX GT ROF	BLT	X	X	X	X	X	X	X	X
	X1	275/30R20 97Y XL	R	265027406	SP SPORT MAXX GT ROF	BLT	X	X	X	X	X	X	X	X
		225/45R19 92W		265008002	SPORT MAX RT2 ROF	BLT				X	X	X	X	X
	X2	225/45R19 92W		265008002	SPORT MAX RT2 ROF	BLT					X	X	X	X
	X5	275/40R20 106W XL	F	265027415	SP SPORT MAXX GT ROF	BLT			X	X	X	X	X	X
		315/35R20 110W XL	R	265027414	SP SPORT MAXX GT ROF	BLT			X	X	X	X	X	X
		285/35R21 105Y XL	F	265027420	SP SPORT MAXX GT ROF	BLT			X	X	X	X	X	X
		325/30R21 108Y XL	R	265027419	SP SPORT MAXX GT ROF	BLT			X	X	X	X	X	X
	X6	275/40R20 106W XL	F	265027415	SP SPORT MAXX GT ROF	BLT			X	X	X	X	X	X
		315/35R20 110W XL	R	265027414	SP SPORT MAXX GT ROF	BLT			X	X	X	X	X	X
		285/35R21 105Y XL	F	265027420	SP SPORT MAXX GT ROF	BLT			X	X	X	X	X	X
		325/30R21 108Y XL	R	265027419	SP SPORT MAXX GT ROF	BLT			X	X	X	X	X	X
<b>HONDA</b>														
	CRV	P225/60R18 99H		290105035	GRANDTREK AT 20	BSW			X	X	X			
	FIT	175/65R15 84S		263027501	SP 31 A A/S	BSW	X	X						
		185/55R16 83H		265004140	SP SPORT 7000 A/S	BSW	X	X	X	X				
<b>INFINITI</b>														
	EX35 / QX50 Q50 / Q60	P225/55R18 97V		265004178	SP SPORT 7000 A/S	BSW	X	X	X	X	X			
		P245/40R19 94V		265021144	SP SPORT 5000 DSST CTT	BSW		X	X					
		P245/40R19 94V		265021153	SP SPORT 5000 DSST NRT	BSW				X	X	X	X	X
		245/40R19 94V		265023827	SP SPORT MAXX 050 DSST	BSW		X	X					
		245/40RF19 94W	F	265031601	SP SPORT MAXX 050 DSST NRT	BSW				X	X	X	X	X
		265/35RF19 94W	R	265031602	SP SPORT MAXX 050 DSST NRT	BSW				X	X	X	X	X
		245/40RF19 94W		265023836	SP SPORT MAXX 050 DSST NRT	BSW				X	X	X	X	X
		P255/40RF19 96V		265021145	SP SPORT 5000 A/S DSST	BSW					X	X	X	X
	P255/40RF19 96Y		265023838	SP SPORT MAXX 050 DSST	BSW						X	X	X	
<b>JAGUAR</b>														
	XF / XFR	255/35ZR20 97Y XL	F	265023860	SP SPORT MAXX	BLT	X	X	X					
		285/30ZR20 99Y XL	R	265040737	SP SPORT MAXX	BLT	X	X	X					
	XJ / XJL	245/40ZR20 99Y XL		265023848	SP SPORT MAXX GT	BLT	X	X	X	X	X	X		
		275/35ZR20 102Y XL		265023849	SP SPORT MAXX GT	BLT	X	X	X	X	X	X	X	
<b>JEEP</b>														
	RENEGADE	215/60R17 96T		266004819	SIGNATURE II	BSW			X	X	X	X	X	X
<b>LEXUS</b>														
	GS / GS HYBRID	P235/45R18 94V		265028100	SP SPORT 5100	BSW	X	X	X	X	X	X	X	
		235/45R18 94Y		265023816	SP SPORT MAXX 050	BSW	X	X	X	X	X	X	X	X
		235/40R19 96Y XL	F	265023817	SP SPORT MAXX 050	BSW	X	X	X	X	X	X	X	X
		265/35R19 94Y	R	265023818	SP SPORT MAXX 050	BSW	X	X	X	X	X	X	X	X
	GX	265/55R19 109V		290014827	GRANDTREK AT23	BLT							X	X
	IS / IS Hybrid	225/45R17 91V		265037647	SP SPORT 5000M	BSW	X	X	X	X	X	X	X	X
		225/40R18 88Y	F	265023842	SP SPORT MAXX 050	BSW						X	X	X
		255/35R18 90Y	R	265023843	SP SPORT MAXX 050	BSW						X	X	X
		235/40R19 96Y XL		265023861	SP SPORT MAXX 050	BLT								X
	LC	245/40R21 96Y	F	265023830	SP SPORT MAXX 050 DSST CTT	BSW						X	X	X
		275/35R21 99Y	R	265023837	SP SPORT MAXX 050 DSST CTT	BSW						X	X	X

VEHICLE MAKE	VEHICLE MODEL	TIRE SIZE SERVICE DESCR.	FRONT/ REAR	PRODUCT CODE	TIRE LINE	SIDEWALL DESCRIPTION	VEHICLE MODEL YEAR									
							2013	2014	2015	2016	2017	2018	2019	2020	2021	
<b>LEXUS (Cont.)</b>																
LEXUS	LS	P245/45R19 98V		265040745	SP SPORT MAXX A1 A/S	BSW	X	X	X	X	X	X				
		245/45R19 98Y		265023826	SP SPORT MAXX 050	BSW	X	X	X	X	X	X				
		245/50RF19 101V		265032001	SP SPORT MAXX A1 A/S DSST	BSW							X	X	X	
		245/50R19 101W		265023839	SP SPORT MAXX 050 DSST	BLT									X	
			245/45R20 99Y		265023864	SP SPORT MAXX 050 DSST	BLT								X	
	LX		285/60R18 116V		290014825	GRANDTREK AT23	SBL			X	X	X	X	X	X	X
			P285/50R20 111V		290122310	GRANDTREK PT2A	BSW	X	X	X						
			285/50R20 112V		290122311	GRANDTREK PT2A	SBL				X	X	X	X	X	X
			275/50R21 113V XL		290124400	GRANDTREK PT3A	SBL				X	X	X	X	X	X
	NX		225/65R17 102H		290126785	GRANDTREK ST30	BSL			X	X	X	X	X	X	X
		RC	P235/45R18 94V		265028100	SP SPORT 5100	BSW			X	X	X	X	X	X	X
	235/45R18 94Y			265023816	SP SPORT MAXX 050	BSW			X	X	X	X	X	X	X	
	235/40R19 96Y XL		F	265023817	SP SPORT MAXX 050	BSW			X	X	X	X				
	265/35R19 94Y		R	265023818	SP SPORT MAXX 050	BSW			X	X	X	X				
235/40R19 96Y XL	F		265023861	SP SPORT MAXX 050	BLT							X	X	X		
265/35R19 94Y	R		265023863	SP SPORT MAXX 050	BLT							X	X	X		
RX	P235/60R18 102V		290123503	GRANDTREK TOURING A/S	BSW	X	X	X								
	P235/55R19 101V		290123502	GRANDTREK TOURING A/S	VSB	X	X	X								
<b>MAZDA</b>																
MAZDA	MAZDA 3	215/45R18 89W		265038960	SP SPORT 5000	BSW		X	X	X	X	X				
	MAZDA 6	P225/45R19 92W		265037649	SP SPORT 5000	BSW	X	X	X	X	X					
<b>MERCEDES-BENZ</b>																
MERCEDES-BENZ	C63 AMG	245/35ZR19 (93Y) XL	F	265029330	SPORT MAXX RT	BLT			X	X	X	X	X	X	X	
		265/35ZR19 (98Y) XL	R	265029331	SPORT MAXX RT	BLT			X	X	X	X	X	X	X	
	CLA / CLA45 AMG	235/40ZR18 95Y XL		265023833	SP SPORT MAXX GT	BLT	X	X	X	X	X	X	X	X		
		235/35ZR19 (91Y) XL		265029338	SPORT MAXX RT	BLT	X	X	X	X	X	X	X			
	E-CLASS	245/45R18 100Y XL	F	265023035	SPORT MAXX RT2 NST	BLT					X	X	X	X	X	
		275/40R18 103Y XL	R	265023034	SPORT MAXX RT2 NST	BLT					X	X	X	X	X	
	G65 AMG	275/50R20 113W XL		265023942	SP SPORT MAXX	BLT	X	X	X	X	X	X				
		GLC43 AMG	255/40ZR21 102Y XL		265008006	SPORT MAXX RT2	BLT					X	X	X	X	X
			285/35ZR21 105Y XL		265008007	SPORT MAXX RT2	BLT					X	X	X	X	X
	GLK350	235/50R19 99H		290123513	GRANDTREK TOURING A/S	BLT	X	X	X							
		235/45R20 100H		290123510	GRANDTREK TOURING A/S	BLT	X	X	X							
	M-CLASS	255/50R19 107H		290123507	GRANDTREK TOURING A/S	VSB	X	X	X	X	X	X				
		265/45R20 104Y		265025944	SP SPORT MAXX GT	VSB	X	X	X	X	X	X				
	<b>MINI</b>															
MINI	CLUBMAN	225/45R17 94W XL		265008003	SPORT MAXX RT2	BLT						X	X	X	X	
	COOPER	205/45R17 88W XL		265029326	SPORT MAXX RT	BLT						X	X	X	X	
		205/45R17 88W XL		265029327	SPORT MAXX RT ROF	BLT						X	X	X	X	
		205/40R18 86W XL		265029328	SPORT MAXX RT ROF	BLT						X	X	X	X	
	COUNTRYMAN	225/45R19 92W		265008002	SPORT MAXX RT2 ROF	BLT					X	X	X	X	X	
<b>MITSUBISHI</b>																
MITSUBISHI	iMIEV	145/65R15 72H	F	267028900	ENASAVE	BSW	X	X	X	X	X					
		175/60R15 81H	R	267028901	ENASAVE	BSW	X	X	X	X	X					
	MIRAGE	165/65R14 79S		267028902	ENASAVE	VSB		X	X	X	X	X	X			
OUTLANDER	P215/70R16 99H		290139031	GRANDTREK ST20	VSB	X	X									
<b>NISSAN</b>																
NISSAN	370Z	245/40R19 98W XL	F	265005100	SP SPORT MAXX GT600	BSW						X	X	X	X	
		285/35R19 103W XL	R	265005101	SP SPORT MAXX GT600	BSW						X	X	X	X	
	ALTIMA	P235/45R18 94V		265004179	SP SPORT 7000 A/S	BLT	X	X	X	X	X					
	ARMADA	265/70R18 116H		290014826	GRANDTREK AT23	BSW					X	X	X	X	X	
		GT-R	255/40RF20 97W	F	265039947	SP SPORT 7010 DSST A/S	BSW		X	X	X	X	X			
	GT-R NISMO	285/35RF20 100W	R	265039946	SP SPORT 7010 DSST A/S	BSW		X	X	X	X	X	X			
		255/40ZRF20 (97Y)	F	265028809	SP SPORT 600 DSST	BSW						X	X			
		285/35ZRF20 (100Y)	R	265028810	SP SPORT 600 DSST	BSW						X	X			
		255/40ZRF20(97Y)	F	265028811	SPSPORTMAXX GT600 DSST	BSW								X	X	
		285/35ZRF20(100Y)	R	265028812	SPSPORTMAXX GT600 DSST	BSW								X	X	
	MICRA	185/55R16 83H		265004140	SP SPORT 7000 A/S	BSW			X	X	X	X	X			
		ROGUE	P225/60R17 98H		290139030	GRANDTREK ST20	BSW	X								
	225/65R17 102H			290126789	GRANDTREK ST30	BSW				X	X	X				
	225/65R17 102H			290126791	GRANDTREK ST30 NRT	BSW							X	X		
	235/65R17 104H			290016801	GRANDTREK PT21	BLT									X	
	225/60R18 100H			290126787	GRANDTREK ST30	BSW		X	X	X	X	X				
	235/60R18 103H			290016802	GRANDTREK PT21	BLT									X	
	235/55R19 101V			290016804	GRANDTREK PT21	BLT									X	
	ROGUE HYBRID		225/60R18 100H		290126788	GRANDTREK ST30	BSW				X	X	X	X	X	X



VEHICLE MAKE	VEHICLE MODEL	TIRE SIZE SERVICE DESCR.	FRONT/ REAR	PRODUCT CODE	TIRE LINE	SIDEWALL DESCRIPTION	VEHICLE MODEL YEAR								
							2013	2014	2015	2016	2017	2018	2019	2020	2021
<b>PORSCHE</b>															
911 GT2 RS		265/35ZR20 (99Y) XL	F	265008301	SPORT MAXX RACE 2	BLT						X	X	X	X
		325/30ZR21 (108Y) XL	R	265008302	SPORT MAXX RACE 2	BLT						X	X	X	X
911 GT3		245/35ZR20 (95Y) XL	F	265008303	SPORT MAXX RACE 2	BLT						X	X	X	X
		305/30ZR20 (103Y) XL	R	265008304	SPORT MAXX RACE 2	BLT						X	X	X	X
CAYMAN GT4		245/35ZR20 (95Y) XL	F	265008303	SPORT MAXX RACE 2	BLT								X	X
		295/30ZR20 (101Y) XL	R	265008305	SPORT MAXX RACE 2	BLT								X	X
<b>SUBARU</b>															
IMPREZA WRX		235/45R17 94W		265029322	SP SPORT MAXX RT	BSW			X	X	X	X	X	X	X
IMPREZA WRX STI		245/40R18 97W XL		265029323	SP SPORT MAXX RT	BSW			X	X	X	X	X	X	X
<b>TOYOTA</b>															
4RUNNER		P265/70R17 113S		290105041	GRANDTREK AT20	BSW	X	X	X	X	X	X	X	X	X
C-HR		225/50R18 95V		265014757	SP SPORT 5000	BSW						X	X	X	X
COROLLA		205/55R16 91H		267028905	ENASAVE	BLT							X	X	X
		225/40R18 88V		265014747	SP SPORT 5000	BLT							X	X	X
		225/40R18 88W		265023866	SP SPORT MAXX 050	BLT									X
FJ CRUISER		P265/70R17 113S		290105041	GRANDTREK AT20	BSW	X	X							
LAND CRUISER		P285/60R18 114V		290014840	GRANDTREK AT23	BSW	X	X	X						
MIRAI		235/55R19 101V		265017001	SP SPORT MAXX A2 A/S	BLT									X
PRIUS		P195/65R15 89S		267028904	ENASAVE	VSF				X	X	X			
		P195/65R15 91S		267028906	ENASAVE	VSF							X	X	X
PRIUS PRIME		P195/65R15 89S		267028904	ENASAVE	BSW					X	X	X	X	
RAV4		225/65R17 102H		290126785	GRANDTREK ST30	BSL	X	X	X	X	X	X	X	X	X
		225/65R17 102H		290008500	GRANDTREK PT20	BLT							X	X	X
		225/60R18 100H		290008501	GRANDTREK PT20	BLT							X	X	X
SEQUOIA		P275/55R20 111H		265014741	SP SPORT 5000M	VSF	X	X	X	X	X	X	X	X	X
SIENNA		P235/50R19 99V		265004190	SP SPORT 7000 A/S	VSF	X	X	X	X	X	X	X	X	
TACOMA		P245/75R16 109S		290105537	GRANDTREK AT20	BSL	X	X	X						
		P265/65R17 110S		290105539	GRANDTREK AT20	BSL	X	X	X						
TUNDRA		P275/55R20 111H		265014741	SP SPORT 5000M	VSF	X	X	X	X	X	X	X	X	X