

CARLISLE®

SPECIALTY TIRE AND WHEEL CATALOG



WWW.CARLISLEBRANDTIRES.COM





WELCOME

To Our Valued Customers:

The Carlstar Group is proud to be your global partner for original equipment and aftermarket specialty tires and wheels. Our product offering spans a wide range of industries from the agriculture, construction, outdoor power equipment, powersports, high speed trailer and flat free/manual markets. The diverse portfolio of solutions are offered under several leading brands including Carlisle® tires and wheels, ITP® tires and wheels, as well as Cragar®, Black Rock® and Unique® wheels and Marastar® manual tires.

The Carlstar Group employs over 3,400 passionate professionals around the globe ready and willing to assist you. With 17 facilities located in 4 countries, we strive to ensure you receive the right products where and when you need them.

This edition of the Carlisle Brand Specialty Tire and Wheel Catalog affords easy access to the latest product information, technical specifications, tread designs and applications. Use these color guides to easily find the product that serves your specialty application.



The Carlstar Group has created a culture of converting great ideas into advanced products and a legacy of excellence in product innovation, quality, and customer service.

For additional information, please visit www.carlislebrandtires.com or contact your Carlstar Representative. We appreciate your continued partnership.

All Purpose



AT489 22



AT489 II 23



AT489 XL 23



TRAIL WOLF® 24



TRAIL PRO® 24



A-C-T 25



A-C-T HD 25



STRYKER® 26



TERRATHON® 26



BADLANDS A/R 27



BADLANDS XTR 27

Mud



BLACK ROCK® 28



BLACK ROCK® M/S 28





Sport / Performance



VERSA TRAIL® 29



VERSA TRAIL® XTR 29



TURF TAMER 29



FRONT

TRAIL WOLF® SPORT 30



REAR

TRAIL WOLF® SPORT 30

Hard Packed Turf



ALL TRAIL® 30



ALL TRAIL® II 30



HD FIELD TRAX 31



KNOBBY 31





UTILITY VEHICLES, SIDE BY SIDE VEHICLES

AT489

The AT489 tire is a popular original equipment replacement tire and strikes a great balance between lightweight and puncture resistance. It has outstanding grip on loose terrain without giving up the comfortable ride on hard-packed surfaces, soft surfaces and mud.

SIZE	PRODUCT CODE	STAR/PLY	DIAMETER†	WIDTH†	RIM WIDTH	MAX LOAD @ 50 MPH	MAX PSI	TIRE WEIGHT	TREAD DEPTH (32nds)
22X9.50-10 NHS	5793N1	4 PR	22.1	9.6	7.00	585	14	15.8	19
AT22X11.00-10	5893V0	2*	22.0	11.1	8.00	330	5	15.8	19
22X11.00-10 NHS	5893H5	4 PR	22.0	10.0	8.00	620	12	16.0	19
AT23X7.00-10	5893M0	2*	23.0	7.0	6.00	240	5	11.6	19
AT23X10.00-10	589327	3*	23.4	9.5	8.00	375	7	17.1	19
AT23X8.00-11	589304	3*	23.5	7.5	6.50	290	7	14.1	19
24X12.00-10 NHS	5793A6	4 PR	24.0	12.0	9.50	1020	20	22.7	19
24x9.50-10 NHS	5793P2	4 PR	24.2	9.6	7.80	870	22	17.8	19
24X10.50-10 NHS	5793N9	4 PR	24.4	10.5	7.80	730	14	19.3	19
AT24X11.00-10	589305	3*	24.3	9.8	9.00	440	7	17.0	19
AT25X11.00-10	589308	3*	25.1	10.6	9.00	455	7	19.8	19
AT24X8.00-11	589332	3*	24.2	8.6	6.50	320	7	17.3	19
AT24X9.00-11	5893A9	3*	24.3	9.1	7.50	365	7	17.2	19
AT24X10.00-11	589328	3*	24.6	9.6	8.00	395	7	17.9	19
AT23X8.00-12	589329	3*	23.1	7.4	6.50	280	7	13.1	19
AT23X10.00-12	589330	3*	23.4	9.1	8.00	365	7	16.7	19
AT24X8.00-12	589337	3*	24.2	8.0	6.50	310	7	13.8	19
24x8.00-12 NHS	6P0472	4 PR	24.7	7.5	6.50	715	22	14.0	19
AT24X9.00-12	589342	2*	23.8	8.9	8.00	265	5	16.5	19
24x9.00-12 NHS	6P0473	4 PR	24.7	8.3	7.00	760	20	16.6	19
AT24X11.00-12	589344	3*	24.0	10.9	9.00	430	7	20.3	19
25X8.00-12 NHS	589306	4 PR	25.3	7.4	6.00	495	10	14.1	19
25X8.00-12 NHS	589359	4 PR	25.3	7.6	6.50	785	22	14.3	19
25X10.00-12 NHS	589335	4 PR	25.3	9.0	8.00	600	10	16.8	19
25X10.00-12 NHS	560416	4 PR	25.8	9.1	8.00	1005	24	18.9	19
25X11.00-12 NHS	589351	4 PR	25.4	10.2	8.00	1050	22	20.1	19
25X11.00-12 NHS	560414	4 PR	25.5	10.5	8.00	1050	22	21.2	19
AT26X10.00-12	589336	2*	25.7	9.8	8.00	385	5	18.8	19

NHS tires are Non-Highway Service Tires. "AT" tires are designed for ATV applications. "NHS" tires are designed for Utility Vehicle applications.

† Indicates mounted diameter and mounted width

*NOTE: "AT" tires are Star Rated. "NHS" tires are Ply Rated (PR).



AT 489 II

AT 489 XL



AT489 II

The AT489 II tire is the next generation of the original AT489. It features dependable performance for a wide range of terrain conditions like soft to intermediate surfaces. Made in the USA.

SIZE	PRODUCT CODE	STAR/PLY	DIAMETER†	WIDTH†	RIM WIDTH	MAX LOAD @ 50 MPH	MAX PSI	TIRE WEIGHT	TREAD DEPTH (32nds)
AT26X8.00-14	560565	3*	26.0	7.8	6.00	355	7	16.6	20
AT26X10.00-14	560568	3*	26.3	9.8	8.00	430	7	21.9	20
27X9.00-12 NHS	6P0371	6 PR	27.2	9.0	7.00	1230	32	21.0	20
27X11.00-12 NHS	6P0372	6 PR	27.4	11.4	9.00	1520	34	29.9	20

NHS tires are Non-Highway Service Tires. "AT" tires are designed for ATV applications. "NHS" tires are designed for Utility Vehicle applications.

† Indicates mounted diameter and mounted width

*NOTE: "AT" tires are Star Rated. "NHS" tires are Ply Rated (PR).



AT489 XL

The AT489 XL tire is the heavy duty version of the original AT 489. It is an excellent choice for intermediate to hard surface use featuring a 3/4 inch lug depth and lightweight construction. Made in the USA.

SIZE	PRODUCT CODE	STAR/PLY	DIAMETER†	WIDTH†	RIM WIDTH	MAX LOAD @ 50 MPH	MAX PSI	TIRE WEIGHT	TREAD DEPTH (32nds)
AT25X8.00-12	560490	3*	25.3	7.6	6.50	340	7	16.0	23
AT25X11.00-12	560491	3*	25.5	10.8	9.00	455	7	21.1	23
AT26X8.00-12	560480	3*	26.1	7.8	6.50	375	7	17.8	23
AT26X9.00-12	560460	3*	26.0	8.9	7.00	410	7	18.9	23
26x9.00-12 NHS	560570	4 PR	27.0	8.8	7.00	1020	20	19.0	23
AT26X11.00-12	560461	3*	26.3	11.0	9.00	480	7	24.5	23
26x11.00-12 NHS	560571	4 PR	27.0	10.8	9.00	1280	22	24.7	23
AT27X9.00-12	560470	3*	27.0	8.9	7.00	440	7	19.0	23
AT27X11.00-12	560471	3*	27.3	12.1	8.00	495	7	24.9	23

NHS tires are Non-Highway Service Tires. "AT" tires are designed for ATV applications. "NHS" tires are designed for Utility Vehicle applications.

† Indicates mounted diameter and mounted width

*NOTE: "AT" tires are Star Rated. "NHS" tires are Ply Rated (PR).



TRAIL WOLF

TRAIL PRO



UTILITY VEHICLES, SIDE BY SIDE VEHICLES

TRAIL WOLF®

The Trail Wolf tire features a deep, wrap around tread that promotes forward traction while minimizing lateral slip. Trail Wolf is made with stiff sidewalls that increase cornering control and a compound formulated for extended wear.

SIZE	PRODUCT CODE	STAR/PLY	DIAMETER†	WIDTH†	RIM WIDTH	MAX LOAD @ 50 MPH	MAX PSI	TIRE WEIGHT	TREAD DEPTH (32nds)
AT19x7.00-8	5370371	1*	19.0	6.8	5.50	143	4	8.1	9
AT19x8.00-8	537038	1*	19.0	7.1	6.00	161	4	9.0	8
AT20x7.00-8	5370391	1*	19.5	6.9	5.50	157	4	8.7	9
AT20x11.00-9	537034	3*	20.2	10.5	9.00	340	7	12.7	16
AT22x10.00-9	537055	3*	21.7	10.7	9.00	355	7	15.8	16
AT25x12.00-9	537082	3*	26.0	12.0	10.00	495	7	24.5	16
20X11.00-10 NHS	510015	4 PR	20.3	10.6	9.00	760	22	13.1	14
AT21x7.00-10	537084	3*	21.5	6.8	5.50	235	7	12.7	16
AT22x7.00-10	537048	3*	22.2	6.7	5.50	255	7	12.5	16
AT22x10.00-10	537049	3*	23.5	9.2	8.00	355	7	16.5	16
AT25x12.00-10	537085	3*	25.0	11.8	10.00	495	7	20.9	15
AT22x7.00-11	537054	3*	21.8	7.3	6.50	245	7	12.8	16
25x8.00-12 NHS	537062	4 PR	25.9	7.5	6.50	785	24	16.0	16
25x11.00-12 NHS	537065	4 PR	26.5	9.2	8.00	1050	22	20.7	16

NHS tires are Non-Highway Service Tires. "AT" tires are designed for ATV applications. "NHS" tires are designed for Utility Vehicle applications.
 † Indicates mounted diameter and mounted width *NOTE: "AT" tires are STAR Rated. "NHS" tires are Ply Rated. (PR).

TRAIL PRO®

The Trail Pro tire is a lightweight, versatile tire that is constructed for better shock absorption and a smoother ride under mixed trail conditions. The non-directional tread pattern provides comfortable cornering, leaving roots and rocks in its track.



SIZE	PRODUCT CODE	STAR/PLY	DIAMETER†	WIDTH†	RIM WIDTH	MAX LOAD @ 40 MPH	MAX PSI	TIRE WEIGHT	TREAD DEPTH (32nds)
25x10.00-12 NHS	6P0164	4 PR	25.9	9.7	7.50	965	22	19.8	19
25x8.00-12 NHS	6P0165	4 PR	25.7	8.0	6.50	935	22	16.4	19
26x9.00-12 NHS	6P0205	4 PR	26.7	8.8	7.00	1050	20	18.8	19
26x11.00-12 NHS	6P0206	4 PR	26.5	11.1	8.00	1320	22	23.4	19

SIZE	PRODUCT CODE	STAR/PLY	DIAMETER†	WIDTH†	RIM WIDTH	MAX LOAD @ 50 MPH	MAX PSI	TIRE WEIGHT	TREAD DEPTH (32nds)
27x9.00-14 NHS	6P0207	6 PR	27.8	8.7	7.00	1200	32	20.5	19
27x11.00-14 NHS	6P0208	6 PR	27.6	10.6	8.00	1480	34	25.3	19

NHS tires are Non-Highway Service Tires. "AT" tires are designed for ATV applications. "NHS" tires are designed for Utility Vehicle applications.
 † Indicates mounted diameter and mounted width



A-C-T

A-C-T HD



UTILITY VEHICLES, SIDE BY SIDE VEHICLES

A-C-T

The A-C-T tire features advanced radial construction to absorb trail hazards and ride disturbances. The radial design increases both traction and ride quality. The A-C-T tire has an aggressive open lug tread pattern with a $\frac{3}{4}$ inch tread depth. Made in the USA.

SIZE	PRODUCT CODE	STAR/PLY	DIAMETER†	WIDTH†	RIM WIDTH	MAX LOAD @ 50 MPH	MAX PSI	TIRE WEIGHT	TREAD DEPTH (32nds)
AT25X8.00R12	560425	3*	25.0	7.8	6.50	340	7	16.7	24
AT25X11.00R12	560426	3*	25.7	10.6	9.00	455	7	23.3	24
26X8.00R12 NHS	560441	4 PR	26.3	7.9	6.50	550	10	17.8	24
26X10.00R12 NHS	560442	4 PR	26.6	10.4	8.00	640	10	24.4	24

NHS tires are Non-Highway Service Tires. "AT" tires are designed for ATV applications. "NHS" tires are designed for Utility Vehicle applications.
† Indicates mounted diameter and mounted width *NOTE: "AT" tires are Star Rated. "NHS" tires are Ply Rated (PR).



A-C-T HD

The A-C-T HD tire is a 6 ply rated radial tire with higher pressure, load capacities and larger sizes than the original A-C-T tire. This tire features increased carcass strength for less sidewall flex and self-cleaning tread design. Made in the USA.

SIZE	PRODUCT CODE	STAR/PLY	DIAMETER†	WIDTH†	RIM WIDTH	MAX LOAD @ 50 MPH	MAX PSI	TIRE WEIGHT	TREAD DEPTH (32nds)
25X8.00R12 NHS	560481	6 PR	25.9	7.7	6.50	700	18	21.0	32
25X11.00R12 NHS	560482	6 PR	26.2	10.1	8.00	935	18	26.6	32
26X8.00R12 NHS	6P0360	6 PR	26.1	8.2	6.50	550	10	21.7	32
26X9.00R12 NHS	560465	6 PR	26.7	8.6	7.00	830	18	25.0	32
26X10.00R12 NHS	6P0361	6 PR	26.7	9.7	8.00	640	10	27.3	32
26X11.00R12 NHS	560466	6 PR	27.2	10.0	8.00	985	18	29.2	32
27X9.00R12 NHS	560472	6 PR	27.5	8.9	7.00	890	18	25.6	32
27X11.00R12 NHS	560473	6 PR	27.5	10.6	8.00	1045	18	31.1	32

NHS tires are Non-Highway Service Tires. "AT" tires are designed for ATV applications. "NHS" tires are designed for Utility Vehicle applications.
† Indicates mounted diameter and mounted width



ATVS, UTILITY VEHICLES, SIDE BY SIDE VEHICLES

STRYKER®

The Stryker tire features a unique offset chevron pattern that is self-cleaning with great performance in all terrains. Made in the USA.

SIZE	PRODUCT CODE	STAR/PLY	DIAMETER†	WIDTH†	RIM WIDTH	MAX LOAD @ 50 MPH	MAX PSI	TIRE WEIGHT	TREAD DEPTH (32nds)
22x9.00-10 NHS	516091	4 PR	22.8	9.4	6.00	675	20	19.9	20
AT22X11.00-8	531073	2*	22.8	11.1	9.00	340	5	21.2	19
AT22X11.00-9	531065	2*	22.5	11.3	10.00	340	5	20.7	19
AT22X11.00-10	531095	2*	22.9	10.1	8.00	330	5	19.2	19
AT25X12.00-9	531075	2*	25.2	12.2	10.00	430	5	26.8	19

NHS tires are Non-Highway Service Tires. "AT" tires are designed for ATV applications. "NHS" tires are designed for Utility Vehicle applications.

† Indicates mounted diameter and mounted width

*NOTE: "AT" tires are STAR Rated. "NHS" tires are Ply Rated. (PR).



TERRATHON®

The Terrathon tire offers a versatile all terrain, non-directional tread pattern that executes outstanding performance on soft to hard surfaces. Made in the USA.

SIZE	PRODUCT CODE	STAR/PLY	DIAMETER†	WIDTH†	RIM WIDTH	MAX LOAD @ 50 MPH	MAX PSI	TIRE WEIGHT	TREAD DEPTH (32nds)
AT26X8.00-14	560487	3*	26.0	7.7	6.00	355	7	18.1	15
26x8.00-14 NHS	6P0034	4 PR	26.6	8.2	6.50	825	22	29.0	16
AT26X10.00-14	560488	3*	26.3	9.5	8.00	430	7	21.6	15

NHS tires are Non-Highway Service Tires. "AT" tires are designed for ATV applications. "NHS" tires are designed for Utility Vehicle applications.

† Indicates mounted diameter and mounted width

*NOTE: "AT" tires are STAR Rated. "NHS" tires are Ply Rated. (PR).



UTILITY VEHICLES, SIDE BY SIDE VEHICLES

BADLANDS A/R

Badlands A/R is a rugged ATV tire featuring a 3 ply radial construction with a V-shaped tread pattern. This provides a smooth ride while still offering traction and predictable handling. Made in the USA.

SIZE	PRODUCT CODE	STAR/PLY	DIAMETER†	WIDTH†	RIM WIDTH	MAX LOAD @ 50 MPH	MAX PSI	TIRE WEIGHT	TREAD DEPTH (32nds)
26X8.00R12 NHS	530009	4 PR	25.6	7.5	6.50	550	10	16.6	15
26X10.00R12 NHS	530008	4 PR	26.6	9.2	8.00	640	10	19.3	15

NHS tires are Non-Highway Service Tires. "AT" tires are designed for ATV applications. "NHS" tires are designed for Utility Vehicle applications.

† Indicates mounted diameter and mounted width



BADLANDS XTR

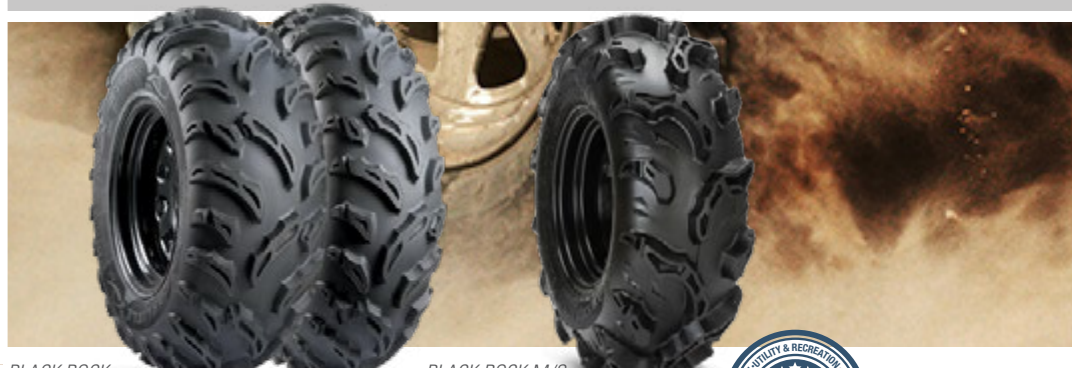
The Badlands XTR is a 6 ply radial tire that absorbs trail hazards with its rugged design. It provides the ultimate smooth ride, traction and predictable handling with its unique X-shaped shoulder lugs to increase grip through corners. Made in the USA.

SIZE	PRODUCT CODE	STAR/PLY	DIAMETER†	WIDTH†	RIM WIDTH	MAX LOAD @ 50 MPH	MAX PSI	TIRE WEIGHT	TREAD DEPTH (32nds)
AT255/65R12	537067	3*	25.2	9.3	8.00	420	7	18.3	16
AT205/80R12	537068	3*	25.1	7.5	6.50	340	7	15.5	16
AT270/60R12	537069	3*	25.3	10.4	8.00	455	7	22.6	16

NHS tires are Non-Highway Service Tires. "AT" tires are designed for ATV applications. "NHS" tires are designed for Utility Vehicle applications.

† Indicates mounted diameter and mounted width

*NOTE: "AT" tires are Star Rated. "NHS" tires are Ply Rated (PR).



BLACK ROCK®

Designed to balance ride quality with an aggressive 3/4 inch tread depth, the Black Rock tire is built to handle any trail conditions while also providing a smooth ride. Made in the USA.

SIZE	PRODUCT CODE	STAR/PLY	DIAMETER†	WIDTH†	RIM WIDTH	MAX LOAD @ 50 MPH	MAX PSI	TIRE WEIGHT	TREAD DEPTH (32nds)
AT24x9.00-11	560530	3*	24.0	8.7	7.00	365	7	18.3	23
AT24x9.00-12	560534	3*	24.0	8.5	7.00	365	7	15.5	23
AT25x8.00-12	560538	3*	25.3	8.0	6.50	340	7	22.6	23
AT25x10.00-12	560540	3*	25.3	9.6	8.00	420	7	22.2	24
AT26x9.00-12	560539	3*	26.4	9.0	7.00	410	7	19.8	23
AT26x11.00-12	560541	3*	26.2	10.4	9.00	480	7	23.6	24
27x9.00-14 NHS	560577	6 PR	27.4	8.3	6.00	910	20	25.7	24
27x11.00-14 NHS	560578	6 PR	27.8	10.5	9.00	1170	22	29.3	24

NHS tires are Non-Highway Service Tires. "AT" tires are designed for ATV applications. "NHS" tires are designed for Utility Vehicle applications.

† Indicates mounted diameter and mounted width

*NOTE: "AT" tires are Star Rated. "NHS" tires are Ply Rated (PR).



BLACK ROCK® M/S

Equipped with a unique tread design for increased traction and control, the Black Rock M/S tire dominates in the mud and snow. With its formulated "mud spikes" and V-shaped dimples, the Black Rock M/S tire maintains an incredibly smooth ride while dominating in loose, soft and muddy terrain.

SIZE	PRODUCT CODE	STAR/PLY	DIAMETER†	WIDTH†	RIM WIDTH	MAX LOAD @ 50 MPH	MAX PSI	TIRE WEIGHT	TREAD DEPTH (32nds)
25x8.00-12NHS	6P0224	6 PR	24.8	7.8	6.50	1020	34	23.3	39
25x10.00-12 NHS	6P0225	6 PR	25.0	9.5	8.00	1185	32	26.6	39
26x9.00-12 NHS	6P0242	6 PR	26.0	8.6	7.00	1170	32	27.9	39
26x11.00-12 NHS	6P0243	6 PR	26.7	10.7	9.00	1430	34	32.2	39
27x9.00-12 NHS	6P0244	6 PR	26.6	8.8	7.00	1230	32	30.0	39
27x11.00-12 NHS	6P0245	6 PR	27.5	10.8	9.00	1520	34	34.0	39
28x9.00-14 NHS	6P0246	6 PR	28.1	8.5	7.00	1280	32	31.0	39
28x11.00-14 NHS	6P0247	6 PR	28.7	10.9	9.00	1570	34	34.0	39

NHS tires are Non-Highway Service Tires. "AT" tires are designed for ATV applications. "NHS" tires are designed for Utility Vehicle applications.

† Indicates mounted diameter and mounted width



VERSA TRAIL

VERSA TRAIL XTR TURF TAMER

**ATVs, UTILITY VEHICLES, SIDE BY SIDE VEHICLES****VERSA TRAIL®**

The Versa Trail tire is an all-purpose, radial tire that increases terrain versatility and optimizes traction without compromising comfort and handling. Its "Tough-Tread" rubber compound and durable 6-ply rated construction protects against cuts, chips and tread wear to ensure unequalled puncture resistance.

SIZE	PRODUCT CODE	STAR/PLY	DIAMETER†	WIDTH†	RIM WIDTH	MAX LOAD @ 50 MPH	MAX PSI	TIRE WEIGHT	TREAD DEPTH (32nds)
25X8.00R12 NHS	6P0270	6 PR	24.9	8.2	6.50	1020	34	22.7	23
25X10.00R12 NHS	6P0271	6 PR	25.2	9.9	8.00	1200	32	25.9	23
26X9.00R12 NHS	6P0272	6 PR	26.4	9.1	7.00	1170	32	25.3	23
26X11R.00R12 NHS	6P0273	6 PR	26.7	10.8	9.00	1430	34	29.2	23
27X9.00R12 NHS	6P0268	6 PR	27.0	9.1	7.00	1230	32	25.8	23
27X11.00R12 NHS	6P0269	6 PR	27.5	11.0	9.00	1520	34	30.6	23
27X9.00R14 NHS	6P0274	6 PR	27.0	9.0	7.00	1200	32	26.6	23
27X11.00R14 NHS	6P0275	6 PR	27.5	11.1	8.00	1480	34	31.0	23
28X10.00R14 NHS	6P0276	6 PR	28.4	10.1	8.00	1390	32	30.2	23
28X12.00R14 NHS	6P0277	6 PR	29.0	11.2	8.00	1650	32	34.0	23
29X10.00R15 NHS	6P0324	6 PR	29.7	9.6	7.00	1430	32	32.4	23

NHS tires are Non-Highway Service Tires. "AT" tires are designed for ATV applications. "NHS" tires are designed for Utility Vehicle applications.
† Indicates mounted diameter and mounted width

VERSA TRAIL® XTR

Expanding on the Versa Trail ATR tire, the Versa Trail XTR tire features more extreme performance and handling on multiple surfaces. With its reinforced belts for unequalled puncture resistance and integrated lug channels for increased traction, the Versa Trail XTR has a larger and more robust product offering for upgraded side-by-sides.



SIZE	PRODUCT CODE	STAR/PLY	DIAMETER†	WIDTH†	RIM WIDTH	MAX LOAD @ 50 MPH	MAX PSI	TIRE WEIGHT	TREAD DEPTH (32nds)
30x10.00R14 NHS	6P0871	8	30.5	9.81	7	1570	32	39.2	24
32x10.00R14 NHS	6P0872	8	32.6	10.3	7	1820	32	42.5	24

NHS tires are Non-Highway Service Tires. "AT" tires are designed for ATV applications. "NHS" tires are designed for Utility Vehicle applications.

TURF TAMER

With its lightweight construction, stiff sidewalls and hollowed-out lugs, the Turf Tamer tire provides excellent handling in hard-packed conditions. Formulated for performance, the Turf Tamer tire's wide profile ensures stability around tight corners and traction for a variety of terrains. Made in the USA.



SIZE	PRODUCT CODE	STAR/PLY	DIAMETER†	WIDTH†	RIM WIDTH	MAX LOAD @ 50 MPH	MAX PSI	TIRE WEIGHT	TREAD DEPTH (32nds)
AT22.5X10.00-8	55U3B9	3*	22.3	9.6	8.00	365	7	12.9	16
22.5X10.00-8 NHS	55U3C7	4 PR	23.0	9.2	8.00	825	22	13.2	16
AT25X12.00-9	55U373	3*	25.1	11.0	10.00	495	7	16.7	16

NHS tires are Non-Highway Service Tires. "AT" tires are designed for ATV applications. "NHS" tires are designed for Utility Vehicle applications. † Indicates mounted diameter and mounted width
*NOTE: "AT" tires are STAR Rated. "NHS" tires are Ply Rated. (PR).



TRAIL WOLF SPORT REAR TRAIL WOLF SPORT FRONT ALL TRAIL ALL TRAIL II



ATVS, UTILITY VEHICLES, SIDE BY SIDE VEHICLES

TRAIL WOLF® SPORT

Designed with a sport-specific tread pattern, the Trail Wolf Sport tire is perfect for any cross-country or recreational rider. Its wrap-around tread and enhanced sidewalls provide increased traction and handling during higher speeds and around tight corners.

SIZE	PRODUCT CODE	STAR/PLY	DIAMETER†	WIDTH†	RIM WIDTH	MAX LOAD @ 50 MPH	MAX PSI	TIRE WEIGHT	TREAD DEPTH (32nds)
AT20x10.00-9	560496**	3*	19.9	9.9	8.00	300	7	13.6	16
AT22x11.00-9	560498**	3*	21.6	11.4	9.00	395	7	16.7	16
AT21x7.00-10	560510***	3*	20.6	6.4	5.50	235	7	11.2	16
AT22x7.00-10	560511***	3*	21.4	6.5	5.50	255	7	11.9	16

NHS tires are Non-Highway Service Tires. "AT" tires are designed for ATV applications. "NHS" tires are designed for Utility Vehicle applications.
 † Indicates mounted diameter and mounted width *NOTE: "AT" tires are STAR Rated. "NHS" tires are Ply Rated. (PR).
 Indicates rear wheel *Indicates front wheel



ALL TRAIL® / ALL TRAIL® II

The All Trail and All Trail II tire lines are specifically designed for use on hard surface conditions. The low, wide profile reduces soft wallowing chassis roll commonly experienced with other tires while its uniquely tight tread pattern offers a smooth ride experience. The specially formulated compound delivers durable extended tire life with responsive, predictable and level handling on pavement, concrete and hard-packed soil. Made in the USA.

SIZE	PRODUCT CODE	STAR/PLY	DIAMETER†	WIDTH†	RIM WIDTH	MAX LOAD @ 50 MPH	MAX PSI	TIRE WEIGHT	TREAD DEPTH (32nds)
20X10.00-8 NHS	510043	4 PR	19.8	9.4	8.00	715	22	13.6	14
22X10.00-8 NHS	510044	4 PR	22.0	10.2	7.00	825	22	15.1	14
20X10.00-10 NHS	510045	4 PR	20.3	8.2	6.00	695	22	13.9	14
22X9.50-10 NHS	55A3N1	4 PR	22.0	9.6	8.00	715	20	15.0	14
22X11.00-10 NHS **	510016	4 PR	21.9	10.1	8.00	880	22	19.3	16
23X11.00-10NHS	6P0058	6 PR	23.5	10.9	9.00	1230	34	19.9	16
24X9.50-10NHS	55A3P2	4 PR	24.0	9.5	7.50	870	22	16.7	14
24X10.50-10 NHS	55A3N9	4 PR	24.3	10.8	8.00	900	20	19.3	14
23X8.00-12 NHS **	511506	4 PR	23.7	8.4	6.50	675	22	19.9	19
23X10.50-12 NHS **	511505	4 PR	23.1	10.1	8.50	835	20	22.0	19
25X8.00-12 NHS **	511507	4 PR	24.8	8.4	7.00	785	22	18.6	19
25X9.00-12 NHS	560443	4 PR	25.2	8.6	7.00	825	20	18.6	16
25X9.00-12 NHS	560587	6 PR	25.4	8.5	6.00	1360	32	19.7	16
25X10-12 NHS **	6P0334	4 PR	24.9	10.5	8.00	965	22	24.2	19
25X10.50-12 NHS **	511508	4 PR	24.8	10.1	7.00	945	20	24.1	19
25X11.00-12 NHS	560444	4 PR	25.5	10.8	9.00	1050	22	20.4	16
25X11.00-12 NHS	6P0333	6 PR	25.5	11.2	9.00	1360	34	23.2	16
27X9.00-14 NHS **	6P0671	4 PR	27.8	8.9	7.00	910	20	23.6	15
27X11.00-14 NHS **	6P0672	4 PR	28.1	10.7	9.00	1170	22	29.5	15

NHS tires are Non-Highway Service Tires. "AT" tires are designed for ATV applications. "NHS" tires are designed for Utility Vehicle applications.
 † Indicates mounted diameter and mounted width ** NOTE: Sizes shown above with asterisks (**) are the All Trail tread pattern. Other sizes listed are the All Trail II tread pattern.



HD FIELD TRAX

KNOBBY



ATVs, UTILITY VEHICLES, SIDE BY SIDE VEHICLES

HD FIELD TRAX

The HD Field Trax tire features a wide profile providing stability on hard-packed surfaces. With its non-directional tread pattern and long-lasting construction, the HD Field Trax tire delivers a smooth and comfortable ride while resisting cut, chips and abrasions.

SIZE	PRODUCT CODE	STAR/PLY	DIAMETER†	WIDTH†	RIM WIDTH	MAX LOAD @ 50 MPH	MAX PSI	TIRE WEIGHT	TREAD DEPTH (32nds)
18X8.50-10 NHS	5883U1	4 PR	18.0	7.8	7.00	495	22	10.9	12
AT22X12.00-8	588389	3*	21.5	11.3	9.50	430	7	20.4	20
AT22.5X10.00-8	5883B9	3*	22.7	10.0	8.00	365	7	20.5	20
24X12.00-12 NHS	560366	2 PR	23.3	11.2	9.50	675	10	24.4	20
AT25X13.00-9	588394	3*	24.8	12.4	10.00	535	7	27.3	20
26X12.00-12 NHS	560467	2 PR	25.4	12.2	9.50	760	10	25.2	20

NHS tires are Non-Highway Service Tires. "AT" tires are designed for ATV applications. "NHS" tires are designed for Utility Vehicle applications.

† Indicates mounted diameter and mounted width

*NOTE: "AT" tires are Star Rated. "NHS" tires are Ply Rated (PR).



KNOBBY

The Knobby tire offers a unique design available in solid or dimple tread pattern. The Knobby tire delivers maximum performance on a variety of terrains and is ideal for ATVs and golf cars.

SIZE	PRODUCT CODE	STAR/PLY	DIAMETER†	WIDTH†	RIM WIDTH	MAX LOAD @ 50 MPH	MAX PSI	TIRE WEIGHT	TREAD DEPTH (32nds)
AT145/70-6	5150021	1*	14.3	5.3	4.50	99	4	4.9	6
AT16X8.00-7	5150031	3*	16.5	6.6	5.00	180	7	7.1	12
18X9.50-8 NHS	537005	2 PR	18.3	8.8	7.00	365	10	10.4	12
AT22X11.00-8 Solid**	537050	3*	22.3	10.5	9.00	395	7	13.7	15
AT25X12.00-9 Solid**	537081	2*	24.6	11.8	10.00	430	5	17.8	15

NHS tires are Non-Highway Service Tires. "AT" tires are designed for ATV applications. "NHS" tires are designed for Utility Vehicle applications.

† Indicates mounted diameter and mounted width

*NOTE: "AT" tires are Star Rated. "NHS" tires are Ply Rated (PR).

**NOTE: The AT22x11-8 and AT25x12-9 sizes have a solid Knobby tread, and not the dimpled Knobby tread pattern shown above.

Agriculture and Construction

FRONT TRACTOR STEERING



FARM SPECIALIST® F-2 40



FARM SPECIALIST® F-2M 40



FARM SPECIALIST® F-3 41

IMPLEMENT



FARM SPECIALIST® F-1 41



FARM SPECIALIST® HF-1 42



FARM SPECIALIST® I-1 42



TRAC CHIEF® I-3 43

COMAPCT UTILITY TRACTOR



FARM SPECIALIST® R-1 44



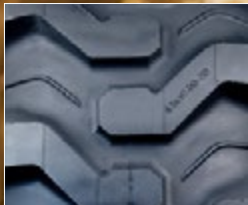
FARM SPECIALIST® R-1-HA 44



TURF PRO R-3
TURF PRO PLUS R-3 45



MULTI TRAC CS R-3 45



XTRA GRIP® R-4 45



WT300® 46



SPECIAL APPLICATIONS



USA LOADER® 46



ULTRA GUARD LVT® 46

SKID STEER



TRAC CHIEF®
TRAC CHIEF® XT 47



GUARD DOG® HD 48



ULTRA GUARD® 48



ULTRA GUARD® MX 48

LARGE DIAMETER



FSTR 49



CSL24 51



CSL32 53



CSL45 53



CSL48 53



CSL66 53



FARM SPECIALIST F-2

FARM SPECIALIST F-2M

FRONT TRACTOR, WAGONS, BALERS, SPREADERS, SEEDERS, AND FEED YARD MIXERS
FARM SPECIALIST® F-2 TRIPLE RIB

The Farm Specialist F-2 tire is a proven tire for front steering 2-wheel drive tractor applications. Its 3 rib design is optimal for steering response in loose and cultivated soils and has added stability with its wide center and shoulder ribs. Made in the USA.

SIZE	PRODUCT CODE	PLY RATING	DIAMETER†	WIDTH†	RIM WIDTH	ROLLING CIRC.	MAX CAPACITY @ 30 MPH	MAX PSI	TIRE WEIGHT
4.00 - 15SL (TT)	52F230	4	24.3	4.4	3.00	72.3	585	52	9.2
5.00 - 15SL (TT)	52F235	4	26.0	5.1	3.00	77.4	715	44	14.3
7.5L - 15SL (TT)	52F290	6	29.1	8.0	6.00	87.1	1430	44	27.4
9.5L - 15SL (TT)	52F244	8	31.5	9.9	7.00	94.0	1870	48	40.5
9.5L - 15SL (TL)	52F344	8	31.5	9.9	7.00	94.0	1870	48	44.3
11L - 15SL (TL)	52F318	8	32.0	11.0	8.00	96.1	2090	44	53.5
5.50 - 16SL (TT)	52F239	6	28.0	5.9	4.00	83.5	1050	56	17.8
6.00 - 16SL (TT)	52F275	6	29.1	6.2	4.00	86.8	1140	52	19.8
6.50 - 16SL (TT)	52F281	6	29.8	7.3	4.50	88.9	1230	48	22.6
7.50 - 16SL (TT)	52F283	6	31.8	7.9	5.50	94.0	1480	44	28.7
11.00 - 16SL (TT)	52F295	8	37.9	13.1	10.00	111.4	2600	40	76.7
10.00 - 16SL (TT)	52F298	8	34.9	11.0	8.00	103.4	2340	44	48.0
6.00 - 16SL (TL)	52F375	6	29.1	6.2	4.00	86.8	1140	52	23.1
7.50 - 16 SL (TL)	52F383	6	31.8	7.9	5.50	94.0	1480	44	34.1
7.50 - 16SL (TL)	52F384	8	31.8	7.9	5.50	94.0	1710	56	33.0
11.00 - 16SL (TL)	52F395	8	37.9	13.1	10.00	111.4	2340	40	76.7
10.00 - 16SL (TL)	52F398	8	34.9	11.0	8.00	103.4	2340	44	52.5
4.00 - 19SL (TT)	52F233	4	28.2	4.4	3.00	85.2	715	52	12.0
16.5L-16.1 (TL)	561854	10	40.5	16.6	14.00	120.2	5200	36	83.0

(TT) indicates a tube-type tire. (TL) indicates a tubeless tires. These tires are not for highway use.

NHS tires are Non-Highway Service tires.

† Indicates mounted diameter and mounted width

FARM SPECIALIST® F-2M QUAD RIB

Developed for larger horsepower tractors, the Farm Specialist F-2M is a quad ribbed powerhouse that is self-cleaning and designed for channeling water in wet conditions. Made in the USA.

SIZE	PRODUCT CODE	PLY RATING	DIAMETER†	WIDTH†	RIM WIDTH	ROLLING CIRC.	MAX CAPACITY @ 30 MPH	MAX PSI	TIRE WEIGHT
11L - 15SL (TT)	53F218	8	32.0	10.5	8.00	96.1	2090	44	43.2
10.00 - 16SL (TT)	53F298	8	35.0	10.8	8.00	105.1	2340	44	49.7
11.00-16SL (TL)	53F395	8	37.2	13.1	10.00	111.4	2600	40	77.1
10.00-16SL F-2M (TL)	53F398	8	35.0	10.8	8.00	105.1	2340	44	65.2

(TT) indicates a tube-type tire. (TL) indicates a tubeless tires. These tires are not for highway use.

† Indicates mounted diameter and mounted width



FRONT TRACTOR, WAGONS, BALERS, SPREADERS, SEEDERS, AND FEED YARD MIXERS

FARM SPECIALIST® F-3 INDUSTRIAL FRONT

Primarily used on front tractor steering applications, the Farm Specialist F-3 tire offers a rugged and heavier tread construction for resistance to chipping, cracking and rib tearing. Its tightly grooved zig-zag tread is designed for turf protection and engineered to channel water in wet terrain. Made in the USA.

SIZE	PRODUCT CODE	PLY RATING	DIAMETER†	WIDTH†	RIM WIDTH	ROLLING CIRC.	MAX CAPACITY @ 25 MPH	MAX PSI	TIRE WEIGHT
11L - 15SL (TL)	6A0805	12	31.3	10.9	8.00	95.7	2680	64	54.0
11L - 16SL (TL)	565315	10	33.0	11.0	8.00	97.9	2470	52	55.2
11L - 16SL (TL)	565317	12	33.0	11.0	8.00	97.9	2760	64	54.3
11L - 15FI (TL) **	6A0820	F	31.9	11.2	8.00	97.5	3960	90	57.0

These tires are not for highway use. † Indicates mounted diameter and mounted width **Highway F-3 Implement



FARM SPECIALIST® F-I HIGHWAY SERVICE IMPLEMENT

Used for highway service implement applications, the Farm Specialist F-I tire is specially designed for towed vehicle applications at intermittent highway speeds. DOT approved for highway use. Made in the USA.

SIZE	PRODUCT CODE	LOAD RANGE	DIAMETER†	WIDTH†	RIM WIDTH	ROLLING CIRC.	MAX CAPACITY @ 60 MPH	MAX PSI	TIRE WEIGHT
9.5L-15 (TL)	51H359	D	30.2	9.5	7.00	89.6	2680	60	38.9
9.5L-15 (TL)	51H360	E	30.2	9.5	7.00	89.6	3080	75	43.4
10.00-15 (TL)	51H361	D	33.5	11.0	8.00	100.0	3960	60	52.3
11L-15 (TL)	51H386	D	30.6	11.0	8.00	90.7	3080	60	47.8
11L-15 (TL)	51H392	F	30.6	11.0	8.00	90.7	3960	90	55.0
12.5L-15 (TL)	6A0561	D	32.1	12.6	10.00	95.5	3740	60	60.4
12.5L-15 (TL)	6A0562	F	32.5	12.9	10.00	99.0	4680	90	72.5
13.50 -15 (TL)	570124	D	31.8	13.6	10.00	95.9	2680	30	61.0

(TT) indicates a tube-type tire. (TL) indicates a tubeless tires. These tires are not for highway use. † Indicates mounted diameter and mounted width



FARM SPECIALIST HF-1

FARM SPECIALIST I-1

FRONT TRACTOR, WAGONS, BALERS, SPREADERS, SEEDERS, AND FEED YARD MIXERS
FARM SPECIALIST® HF-1 IMPLEMENT

The Farm Specialist HF-1 implement tire is designed for higher performance applications with heavier loads and when high flotation is needed. Made in the USA.

SIZE	PRODUCT CODE	PLY RATING	DIAMETER†	WIDTH†	RIM WIDTH	ROLLING CIRC.	MAX CAPACITY @ 30 MPH	MAX PSI	TIRE WEIGHT
25 x 7.50 -15 NHS (TL)	51F378	6	25.2	7.5	5.50	73.3	1230	45	22.2
27 x 9.50 -15 NHS (TL)	51F395	6	27.0	9.6	7.00	79.2	1610	45	29.0
31 x 13.50 -15 NHS (TL)	51F396	6	31.8	13.5	10.00	94.0	2090	30	49.1
31 x 13.50 -15 NHS (TL)	51F397	8	31.8	13.8	10.00	94.2	2620	45	59.0
31 x 13.50 -15 NHS (TL)	51F307	10	31.8	14.0	10.00	94.2	3080	60	57.9
31 x 13.50 -15 NHS (TL)	570060	12	32.1	14.5	10.00	95.4	3520	75	66.0

(TT) indicates a tube-type tire. (TL) indicates a tubeless tires. These tires are not for highway use.

† Indicates mounted diameter and mounted width

FARM SPECIALIST® I-1 IMPLEMENT

With its wide rib tread design, the Farm Specialist I-1 tire is aimed for floatation on farm implements for excellent lateral stability and rolling resistance. Made in the USA.

SIZE	PRODUCT CODE	PLY RATING	DIAMETER†	WIDTH†	RIM WIDTH	ROLLING CIRC.	MAX CAPACITY @ 30 MPH	MAX PSI	TIRE WEIGHT
4.00-9SL (TT)	518249	4	17.4	4.8	3.00	51.6	550	44	6.1
4.00-12SL (TT)	518277	4	20.4	5.0	3.00	60.5	675	44	7.1
26x12.00-12NHS (TL)	510361	4	25.5	11.7	10.50	75.7	1780	20	26.5
26x12.00-12NHS (TL)	510363	10	25.5	11.7	10.50	75.7	3110	52	28.9
26x12.00-12NHS (TL)	560474	12	25.5	11.7	10.50	75.7	3460	62	33.0
9.5L-14SL (TL)	51F399	8	29.4	9.2	7.00	87.0	2400	44	29.7
9.5L-14SL (TT)	51F299	8	29.4	9.2	7.00	87.0	2400	44	25.6
11L-14SL (TL)	51F391	8	29.6	10.6	8.00	87.7	2470	36	32.5
5.00-15SL (TT)	51F235	4	25.2	5.4	4.00	74.7	950	36	12.0
5.90-15SL (TT)	51F252	4	26.3	6.3	4.50	77.9	1140	36	13.5
6.70-15SL (TL)	51F367	4	27.7	7.1	4.50	81.5	1280	32	18.4
6.70-15SL (TL)	51F388	6	28.2	7.2	4.50	83.7	1610	44	16.9
7.60-15SL (TT)	51F237	8	28.7	7.9	5.50	84.4	2090	52	23.5
7.60-15SL (TL)	51F337	8	28.7	7.9	5.50	85.0	2090	52	27.9
9.5L-15SL (TT)	51F244	8	29.9	9.2	7.00	88.5	2470	44	26.2
9.5L-15SL (TL)	51F344	8	29.9	9.2	7.00	88.5	2470	44	27.3
9.5L-15SL (TL)	51F3D7	12	29.9	9.2	7.00	88.5	3000	64	30.1
10.00-15SL (TL)	51F385	8	33.4	11.0	8.00	98.6	3200	40	46.7
11L-15SL (TT)	51F218	8	30.6	11.0	8.00	90.6	2540	36	28.1



TRAC CHIEF I-3

FRONT TRACTOR, WAGONS, BALERS, SPREADERS, SEEDERS, AND FEED YARD MIXERS

FARM SPECIALIST® I-1 IMPLEMENT (Continued)

SIZE	PRODUCT CODE	PLY RATING	DIAMETER†	WIDTH†	RIM WIDTH	ROLLING CIRC.	MAX CAPACITY @ 30 MPH	MAX PSI	TIRE WEIGHT
11L-15SL (TL)	51F318	8	30.6	11.7	8.00	90.6	2540	36	32.7
11L-15SL (TL)	51F317	12	30.6	10.7	8.00	90.6	3200	52	41.6
12.5L-15SL (TT)	51F240	8	32.1	12.3	10.00	96.5	3000	36	43.0
12.5L-15SL (TL)	51F340	8	32.1	12.3	10.00	96.5	3000	36	43.0
12.5L-15SL (TT)	51F241	10	32.2	12.4	10.00	96.5	3420	44	43.0
12.5L-15SL (TL)	51F341	10	32.2	12.4	10.00	96.5	3420	44	43.0
12.5L-15SL (TL)	51F305	12	32.6	12.1	10.00	96.5	3860	52	59.2
12.5L-16SL (TL)	51F353	14	33.4	12.5	10.00	99.0	4180	56	53.5
14L-16.1SL (TL)	510131	8	37.0	14.4	11.00	108.5	3520	28	68.9
16.5L-16.10SL (TL)	51F350	10	40.8	17.1	14.00	117.5	5200	36	101.0
18L-16.1SL (TL)*	510130	10	32.5	17.0	14.00	95.2	4180	32	72.0
19L - 16.1SL (TL)	6A0437	12	42.4	18.8	16.00	124.0	6600	36	131.0
21.5L - 16.1SL (TL)	6A0434	10	44.3	20.1	16.00	125.3	6600	28	146.0
21.5L - 16.1SL (TL)	510136	14	44.5	21.5	18.00	132.1	7850	36	136.0
32x15.5-16.5SL (TL)**	6A0086	14	32.2	15.6	16.50	97.4	5840**	90	87.5

(TT) indicates a tube-type tire, (TL) indicates a tubeless tires. These tires are not for highway use.
 † Indicates mounted diameter and mounted width * NOTE: 18L - 16.1SL I-1 is a 7 Rib Design. ** NOTE: 32 x 15.5-16.5SL I-1 is rated at 25 mph.

TRAC CHIEF® I-3

Designed for traction on implements and backhoes, the Trac-Chief I-3 tire delivers diverse capabilities of aggressive and durable traction on soft surfaces while still providing a smooth ride. It's directional tread design and high load capacity brings stability and easy steering for front wheel tractor applications and backhoe loaders. Made in the USA.

SIZE	PRODUCT CODE	PLY RATING	DIAMETER†	WIDTH†	RIM WIDTH	ROLLING CIRC.	MAX CAPACITY @ 5 MPH	MAX PSI	TIRE WEIGHT
12.4-16 (TL)	570122	6	37.2	12.9	11.00	108.1	2340	30	79.5
10.5/80-18 (TL)*	*570120	10	35.6	10.8	9.00	105.5	3840	54	70.4
12.5/80-18 (TL)*	*570121	12	38.5	12.5	9.00	114.6	5360	55	96.0

(TT) indicates a tube-type tire, (TL) indicates a tubeless tires. These tires are not for highway use.
 † Indicates mounted diameter and mounted width *NOTE: With mud breakers between shoulders



FARM SPECIALIST R-1

FARM SPECIALIST R-1-HA

FRONT TRACTOR, WAGONS, BALERS, SPREADERS, SEEDERS, AND FEED YARD MIXERS
FARM SPECIALIST® R-1

Used primarily on compact utility tractors, the Farm Specialist R-1 tire features an overlapping center tread lug that performs in both wet and dry conditions. The all-purpose tire features a unique multi-angle long bar tread for aggressive performance, excellent traction and lateral stability. Made in the USA.

SIZE	PRODUCT CODE	PLY RATING	DIAMETER†	WIDTH†	RIM WIDTH	ROLLING CIRC.	MAX CAPACITY @ 25 MPH	MAX PSI	TIRE WEIGHT
6-12 (TL)	570030	6	23.0	6.1	5.00	68.9	735	40	18.1
7-14 (TL)	570000	6	27.1	7.4	6.00	80.5	990	36	26.9
7-16 (TL)	570001	6	29.1	8.1	6.00	86.8	1100	36	33.8
8-16 (TL)	570002	6	31.4	8.4	6.00	92.5	1360	28	40.2
9.5-16 (TL)	570003	6	33.5	10.0	8.00	98.1	1390	30	53.0
9.5-20 (TL)	6A0377	6	36.5	9.4	8.00	109.1	1650	30	69.6
9.5-20 (TL)	6A0467	8	36.5	9.4	8.00	112.7	2040	40	69.6
8.3-24 (TL)	570004	6	39.1	8.3	7.00	117.2	1610	34	65.8
9.5-24 (TL)	570005	6	41.3	9.5	8.00	123.2	1870	30	79.3
11.2-24 (TL)	570006	6	43.4	11.2	10.00	129.1	2090	26	89.2
12.4-24 (TL)	570007	4	45.6	12.4	11.00	135.1	1870	16	95.8
12.4-24 (TL)	570008	8	45.6	12.4	11.00	135.1	2830	32	114.7
13.6-24 (TL)	570009	6	47.6	13.6	12.00	140.7	2680	22	113.8
14.9-24 (TL)	6A0429	6	49.5	14.8	13.00	145.4	3000	20	137.0
14.9-24 (TL)	6A0365	8	49.6	14.4	13.00	145.7	3520	26	136.0
16.9-24 (TL)	6A0399	6	52.1	16.9	15.00	155.3	3420	18	160.0
16.9-24 (TL)	6A0398	8	52.3	16.9	15.00	156.0	4080	24	160.0

(TT) indicates a tube-type tire. (TL) indicates a tubeless tires. These tires are not for highway use.

† Indicates mounted diameter and mounted width

FARM SPECIALIST® R-1-HA

Developed with a 45 degree angled tread, the Farm Specialist R-1-HA tire is designed with a straight bar design for maximum performance in mixed terrains. The tire's narrow profile delivers easy handling on compact utility tractors and provides excellent traction with its high angled straight bar tread lugs. Made in the USA.

SIZE	PRODUCT CODE	PLY RATING	DIAMETER†	WIDTH†	RIM WIDTH	ROLLING CIRC.	MAX CAPACITY @ 25 MPH	MAX PSI	TIRE WEIGHT
9.5-24 (TL)	570034	6	41.3	9.5	8.00	123.2	1870	30	67.9
11.2-24 (TL)	570035	6	43.4	11.2	10.00	129.1	2090	26	89.2

(TT) indicates a tube-type tire. (TL) indicates a tubeless tires. These tires are not for highway use.

† Indicates mounted diameter and mounted width



TURF PRO R-3

MULTI TRAC CS R-3

XTRA GRIP R-4

FRONT TRACTOR, WAGONS, BALERS, SPREADERS, SEEDERS, AND FEED YARD MIXERS

TURF PRO R-3 / TURF PRO PLUS R-3

Designed for mowing and turf applications, the Carlisle branded R-3 series is engineered with shallow non-skid depth with isolated tread elements that create minimal ground disturbance for a turf-friendly result. Made in the USA.

SIZE	PRODUCT CODE	PLY RATING	DIAMETER†	WIDTH†	RIM WIDTH	ROLLING CIRC.	MAX CAPACITY @ 25 MPH	MAX PSI	TIRE WEIGHT
31x15.5-15 (TL)**	560589	8	30.3	14.2	13.00	90.4	2760*	45	58.5
13.6-16 (TL)	570080	4	38.2	16.0	12.00	112.8	1570	14	82.3
9.5-24 (TL)	570084	6	40.3	9.5	8.00	120.5	1870	30	59.0
11.2-24 (TL)	570085	6	42.4	11.2	10.00	126.3	2080	26	82.2

(TT) indicates a tube-type tire. (TL) indicates a tubeless tires. These tires are not for highway use. † Indicates mounted diameter and mounted width *NOTE: 31x15.5-15 Turf Pro Plus R3 has a max capacity at 30 mph. **Turf Pro Plus

MULTI TRAC CS R-3

With its squared lugs and wide base for stability, the Multi Trac CS R-3 is excellent for minimal ground disturbance for turf and mowing applications. Made in the USA.

SIZE	PRODUCT CODE	PLY RATING	DIAMETER†	WIDTH†	RIM WIDTH	ROLLING CIRC.	MAX CAPACITY @ 30 MPH	MAX PSI	TIRE WEIGHT
36x14.00-15 (TL)	6L0580	4	35.5	14.7	10.00	104.4	2600	20	59.0
33X12.50-16.5 (TL)	6L0589	4	32.5	12.5	9.75	97.3	2340	30	57.0
41x14.00-20 (TL)	570083	4	42.0	14.8	11.00	125.6	3080	26	101.2
44x18-20 (TL)	6A0376	4	44.8	18.5	14.00	132.3	3420	20	135.0
44x18-20 (TL)	6A0375	6	44.8	18.5	14.00	132.3	4300	30	135.0

(TT) indicates a tube-type tire. (TL) indicates a tubeless tires. These tires are not for highway use. † Indicates mounted diameter and mounted width

XTRA GRIP® R-4

The Xtra Grip R4 tire provides excellent traction for turf and sod applications. This all-purpose farm or industrial tractor tire is engineered with a compound to resist cutting and penetration. It also has a rugged, heavy-duty construction to withstand rigorous operating site conditions. Made in the USA.

SIZE	PRODUCT CODE	PLY RATING	DIAMETER†	WIDTH†	RIM WIDTH	ROLLING CIRC.	MAX CAPACITY @ 25 MPH	MAX PSI	TIRE WEIGHT
43 x 16.00-20 (TL)	570059	6	43.0	16.8	14.00	126.4	3720	30	116.9
16.9-24 (TL)	6A0366	6	50.5	17.3	15.00	147.9	4940	22	156.0
16.9-24 (TL)	6A0363	8	50.5	17.3	15.00	147.9	5840	28	156.0
17.5L-24 (TL)	6A0428	6	48.3	17.6	15.00	141.6	4400	20	153.0
17.5L-24 (TL)	6A0364	8	48.3	17.6	15.00	142.3	5360	26	153.0
18.4-24 (TL)	6A0666	8	54.3	18.3	16.00	162.0	6400	24	201.0
19.5L- 24 (TL)	6A0667	8	52.0	19.2	16.00	155.0	6000	24	192.5
19.5L- 24 (TL)	6A0802	12	51.2	19.3	16.00	152.7	7600	34	213.0
19.5L- 24 (TL)	6A0803	14	51.3	19.3	16.00	152.7	8250	38	213.0
21L-24 (TL)	6A0804	14	54.2	20.7	18.00	162.0	9350	36	246.0

(TT) indicates a tube-type tire. (TL) indicates a tubeless tires. These tires are not for highway use. † Indicates mounted diameter and mounted width



WT300

USA LOADER

ULTRA GUARD LVT

FRONT TRACTOR, WAGONS, BALERS, SPREADERS, SEEDERS, AND FEED YARD MIXERS
WT300®

The WT300 tire is constructed for tractors with less than 30 horsepower. Its low ground pressure ensures turf preservation while its angled tread pattern provides aggressive traction while preventing debris buildup. Made in the USA.

SIZE	PRODUCT CODE	PLY RATING	DIAMETER†	WIDTH†	RIM WIDTH	ROLLING CIRC.	MAX CAPACITY @ 10 MPH	MAX PSI	TIRE WEIGHT
18x8.50-10 NHS (TL)	570046	4	18.3	8.1	6.00	54.8	830	22	12.3
26x12.00-12 NHS (TL)	570042	4	25.7	12.4	9.50	76.2	1780	20	28.2

(TT) indicates a tube-type tire. (TL) indicates a tubeless tires. These tires are not for highway use. † Indicates mounted diameter and mounted width

GENERAL DUTY SKID STEER AND COMPACT TRACTOR APPLICATIONS
USA LOADER®

Engineered with lateral grooves and a “Boot Heel Lug” tread configuration, the USA Loader brings traction and stability on specialty applications where safety and stability are critical. Made in the USA.

SIZE	PRODUCT CODE	PLY RATING	DIAMETER†	WIDTH†	RIM WIDTH	ROLLING CIRC.	MAX CAPACITY @ 5 MPH	MAX PSI	TIRE WEIGHT	TREAD DEPTH (32nds)
10-16.50NHS (TL)	510713	10	30.9	10.6	8.25	92.6	4720	75	59.3	26
12-16.50NHS (TL)	510716	10	32.9	12.6	9.75	98.5	5600	65	76.4	27
305/70D16.5NHS (TL)	6A0170	10	32.9	12.6	9.75	98.5	5600	65	77.2	27

“NHS” tires are Non-Highway Service tires. † Indicates mounted diameter and mounted width

ULTRA GUARD LVT®

The Ultra Guard LVT tire is used on hard surface severe-service skid steers. With its low tread void for maximum net ground contact, massive footprint & extra premium chip/chunk resistant tread rubber, the Ultra Guard LVT tire is essential on surface sites such as demolition, rocks, gravel and concrete. Made in the USA.

SIZE	PRODUCT CODE	PLY RATING	DIAMETER†	WIDTH†	RIM WIDTH	ROLLING CIRC.	MAX CAPACITY @ 5 MPH	MAX PSI	TIRE WEIGHT	TREAD DEPTH (32nds)
10-16.5NHS (TL)	570075	10	31.4	10.9	8.25	92.4	4710	75	90.0	44
12-16.5NHS (TL)	570076	14	32.9	13.1	9.75	99.0	6780	90	112.0	44
14-17.5NHS (TL)	570077	14	36.3	13.8	10.50	109	8540	80	132.0	44

“NHS” tires are Non-Highway Service tires. † Indicates mounted diameter and mounted width



TRAC CHIEF

TRAC CHIEF XT

GENERAL DUTY SKID STEER AND COMPACT TRACTOR APPLICATIONS

TRAC CHIEF®/ TRAC CHIEF® XT

Applied on general duty skid steer and compact tractor applications, the Trac Chief and Trac Chief XT tires are engineered with a flat profile for increased stability, rugged tread compounds and a built-in rim gauge to protect its bead area from hazards and debris. Made in the USA.

SIZE	PRODUCT CODE	PLY RATING	DIAMETER*	WIDTH*	RIM WIDTH	ROLLING CIRC.	MAX CAPACITY @ 5 MPH	MAX PSI	TIRE WEIGHT	TREAD DEPTH (32nds)
18x8.50-10NHS (TL)	51S311	4	18.2	8.0	7.00	54.9	830	22	14.9	16
20x8.00-10NHS (TL)	560483	4	19.3	8.2	7.00	57.1	1210	35	17.5	16
5.70-12NHS (TL)	51S3C2	4	22.4	5.7	4.50	67.4	1450	60	15.6	17
23x8.50-12SS (TL)	51S3C3	4	23.0	8.0	7.00	68.9	1470	35	22.2	14
23x8.50-12SS (TL)	51S3G8	6	22.6	8.4	7.00	68.9	1820	50	26.1	26
26x12.00-12NHS (TL)	51S361	4	25.5	12.4	10.50	76.4	1780	20	38.3	21
26x12.00-12SS (TL)	6A0282	8	25.5	12.4	10.50	77.2	3020	50	47.0	21
23x8.50-14NHS (TL)	51S388	4	23.0	8.0	7.00	69.2	1560	35	22.6	17
25x8.50-14SS (TL)	51S379	6	25.8	8.4	7.00	77.1	2130	50	30.2	17
27x12.5-15NHS (TL)	560484	4	28.0	12	10.00	83.1	2030	20	41.0	19
27x8.50-15SS (TL)	51S339	6	26.7	9.0	7.00	79.8	2400	50	37.0	17
27x10.50-15SS (TL)	51S3H7	6	26.8	10.4	8.50	80.1	2610	45	36.2	17
27x10.50-15SS (TL)	560369	8	27.2	10.2	8.50	81.3	3740	60	41.3	17
28x8.5-15NHS (TL)	570139	6	28.3	8.8	7.00	83.6	1870	45	32.2	16
10-16.50NHS (TL)	51S3C8	6	30.5	10.7	8.25	87.9	3500	45	45.3	19
10-16.50NHS (TL)	51S3D1	8	30.5	10.7	8.25	92.1	4140	60	45.4	19
10-16.5 NHS (TL) XT*	570140	10	30.6	10.8	8.25	90.3	4710	75	49.0	21
12-16.50NHS (TL)	51S3C9	6	32.8	12.1	9.75	99.7	4220	40	57.0	23
12-16.5NHS (TL)	51S3J7	10	32.8	12.1	9.75	99.7	5600	65	63.5	23
12-16.5 NHS (TL) XT*	570141	12	32.8	12.5	9.75	95.6	6320	80	69.0	23
14-17.5NHS (TL)	510027	6	35.7	13.7	10.50	109.5	4820	30	83.0	25
14-17.5NHS (TL)	6A0284	10	36.2	13.7	10.50	107.3	6800	55	84.5	25
14-17.5NHS (TL)	510039	14	36.1	14.1	10.50	109.5	8540	80	84.5	25
15-19.5NHS (TL)	511729	6	40.0	15.6	12.25	119.1	6130	30	105.0	26
15-19.5NHS (TL)	510024	12	39.7	16.2	12.25	117.2	9190	60	116.0	26
15x19.5NHS (TL)	511702	14	39.7	16.2	12.25	117.2	10060	70	138.0	26
385/65D19.5 (TL)	511703	16	40.1	16.3	12.30	118.9	11000	95	116.0	25

These tires are not for highway use. † Indicates mounted diameter and mounted width
 *NOTE: Tire sizes shown with the asterisk are Trac Chief XT (XT) tread pattern, used for heavier loads.



GUARD DOG HD

ULTRA GUARD

ULTRA GUARD MX

GENERAL DUTY SKID STEER AND COMPACT TRACTOR APPLICATIONS
GUARD DOG® HD

Designed for heavy-duty skid steers, the Guard Dog HD tire has premium tread compounds for tougher service conditions and rigorous construction applications. With its stepped-off outer tread lugs and squared shoulder design, the Guard Dog HD delivers maximum performance and stability on the work site. Made in the USA.

SIZE	PRODUCT CODE	PLY RATING	DIAMETER†	WIDTH†	RIM WIDTH	ROLLING CIRC.	MAX CAPACITY @ 5 MPH	MAX PSI	TIRE WEIGHT	TREAD DEPTH (32nds)
33x15.50-16.5 (TL)	570031	12	32.8	14.4	12.00	97.3	6835	60	97.3	28
10-16.5NHS (TL)	570130	10	30.9	10.3	8.30	90.3	4710	75	56.6	26
12-16.5NHS (TL)	570131	12	32.7	12.1	9.75	95.6	6320	80	85.0	28

NHS tires are Non-Highway Service tires. † Indicates mounted diameter and mounted width

ULTRA GUARD®

Used for severe service skid steers, the Ultra Guard tire is engineered with an open shoulder design displaying a lug void essential for abrasive surface conditions. Its extra deep 44/32" tread depth shows a 70% increased depth than other premium skid steer products. With a tread yielding a 14% increased tire life and a thick sidewall buff bar for extra protection, the Ultra Guard tire is proven for absolute durability. Made in the USA.

SIZE	PRODUCT CODE	PLY RATING	DIAMETER†	WIDTH†	RIM WIDTH	ROLLING CIRC.	MAX CAPACITY @ 5 MPH	MAX PSI	TIRE WEIGHT	TREAD DEPTH (32nds)
10x16.5NHS (TL)	560402	10	30.4	10.4	8.25	92.4	4710	75	79.3	44
12x16.5NHS (TL)	560403	12	32.7	12.1	9.75	99.0	6320	80	99.6	44

NHS tires are Non-Highway Service tires. † Indicates mounted diameter and mounted width

ULTRA GUARD® MX

The Ultra Guard MX tire is engineered for Severe Duty skid steer applications. Designed with a unique large angled, non-directional center lug tread design, the Ultra Guard MX delivers increased performance on soft and hard surfaces. Made in the USA.

SIZE	PRODUCT CODE	PLY RATING	DIAMETER†	WIDTH†	RIM WIDTH	ROLLING CIRC.	MAX CAPACITY @ 5 MPH	MAX PSI	TIRE WEIGHT	TREAD DEPTH (32nds)
10-16.5 NHS (TL)	6A0325	10	31.5	11.0	8.25	92.2	4710	75	73.0	42
12-16.5 NHS (TL)	6A0326	14	32.7	13.0	9.75	95.9	6780	90	100.0	42
14-17.5 NHS (TL)	6A0327	14	36.3	14.4	10.50	106.2	8540	80	117.0	42

These tires are not for highway use.
† Indicates mounted diameter and mounted width



FSTR

CSL24

CSL32

CSL45

CSL48

CSL66

HEAVY DUTY, LARGE TRACTOR APPLICATIONS

FSTR

The FSTR is a line of R1–W radial tires with rim diameters ranging from a 16” to 48”. The radial construction of these tires will deliver the traction and smooth ride for farmers to increase their efficiency in the field.

CARLISLE LINE	SIZE PLATE	US SKU	PLY LOAD INDEX	PRIMARY LOAD RATING		SW (IN)	OD (IN)	TREAD DEPTH (AT CENTER) 32NDS	ROLLING CIRCUMFERENCE (INCHES)	STATIC LOAD RADIUS (INCHES)
				LOAD CAPACITY (LBS)	PRESSURE (PSI)					
FSTR	240/70 R16 (TL)	6A06802	104A8	1,984	34	9.65	29.33	35	88	13.2
FSTR	260/70 R16 (TL)	6A06812	109A8	2,271	34	10.24	30.31	37	91	13.6
FSTR	280/70 R16 (TL)	6A06822	112A8	2,469	34	11.10	31.42	40	94	14.0
FSTR	280/70 R18 (TL)	6A06832	114A8	2,601	34	11.10	33.43	40	100	15.0
FSTR	280/70 R20 (TL)	6A06842	116A8	2,756	34	11.10	35.43	43	106	15.9
FSTR	280/85 R20 (TL)	6A07052	112A8	2,469	23	11.10	38.74	43	116	17.4
FSTR	9.5R20 (TL)	6A05652	108A8	2,205	23	9.49	36.93	42	111	16.6
FSTR	300/70 R20 (TL)	6A06852	120A8	3,086	34	11.61	37.48	44	112	16.8
FSTR	320/70 R20 (TL)	6A06862	113A8	2,535	23	12.56	38.66	43	116	17.3
FSTR	320/85 R20 (TL)	6A07062	119A8	2,998	23	12.56	41.42	44	124	18.5
FSTR	360/70 R20 (TL)	6A06872	129A8	4,079	34	14.06	41.02	50	122	18.3
FSTR	280/85 R24 (TL)	6A05662	115A8	2,680	23	11.10	42.76	49	128	19.2
FSTR	320/70 R24 (TL)	6A06882	116A8	2,756	23	12.56	43.11	47	129	19.4
FSTR	320/85 R24 (TL)	6A07082	122A8	3,307	23	12.56	45.43	49	136	20.4
FSTR	340/85 R24 (TL)	6A05672	125A8	3,640	23	13.50	46.77	54	140	21.0
FSTR	360/70 R24 (TL)	6A06892	122A8	3,307	23	14.06	45.35	52	136	20.3
FSTR	380/70 R24 (TL)	6A06902	125A8	3,638	23	14.96	46.85	55	140	21.0
FSTR	380/85 R24 (TL)	6A05722	131A8	4,300	23	14.96	49.45	55	147	22.1
FSTR	420/70 R24 (TL)	6A06912	130A8	4,189	23	16.46	49.13	54	147	22.0
FSTR	420/85 R24 (TL)	6A07112	137A8	5,071	23	16.46	52.13	54	155	23.3
FSTR	440/65 R24 (TL)	6A06732	128D	3,968	35	17.52	46.65	50	139	20.9
FSTR	460/70 R24 (TL)	6A06922	152A8	7,826	46	18.11	49.61	47	148	22.2
FSTR	480/65 R24 (TL)	6A06742	133D	4,542	35	18.90	48.62	52	145	21.8
FSTR	480/70 R26 (TL)	6A08322	139A8	5,357	23	18.90	54.33	57	162	24.3


FSTR (continued)

CARLISLE LINE	SIZE PLATE	SKU	PRIMARY LOAD RATING			SW (IN)	OD (IN)	TREAD DEPTH (AT CENTER) 32NDS	ROLLING CIRCUMFERENCE (INCHES)	STATIC LOAD RADIUS (INCHES)
			LOAD INDEX	LOAD CAPACITY (LBS)	PRESSURE (PSI)					
FSTR	750/65 R26 (TL)	6A08342	166A8	11,685	34	29.72	64.57	63	192	28.7
FSTR	280/85 R28 (TL)	6A07122	118A8	2,910	23	11.10	46.73	49	140	21.1
FSTR	320/85 R28 (TL)	6A07132	124A8	3,527	23	12.60	49.41	52	148	22.2
FSTR	340/85 R28 (TL)	6A07142	127A8	3,858	23	13.50	50.75	53	152	22.8
FSTR	360/70 R28 (TL)	6A06932	125A8	3,638	23	14.06	49.41	53	148	22.2
FSTR	380/70 R28 (TL)	6A06942	127A8	3,858	23	14.96	50.91	55	153	22.9
FSTR	380/85 R28 (TL)	6A05702	133A8	4,540	23	14.96	53.43	55	160	24.0
FSTR	420/70 R28 (TL)	6A06952	133A8	4,542	23	16.46	53.19	54	159	23.9
FSTR	420/85 R28 (TL)	6A05712	139A8	5,360	23	16.46	56.10	58	168	25.1
FSTR	440/65 R28 (TL)	6A06752	131D	4,299	35	17.52	50.59	52	152	22.8
FSTR	480/65 R28 (TL)	6A06762	142D	5,842	35	18.90	52.64	52	158	23.7
FSTR	480/70 R28 (TL)	6A06962	140A8	5,512	23	18.90	56.10	58	168	25.1
FSTR	540/65 R28 (TL)	6A06772	149D	7,165	35	21.65	55.91	57	167	25.1
FSTR	380/85 R30 (TL)	6A06532	135A8	4,800	23	14.96	55.43	55	166	24.9
FSTR	420/70 R30 (TL)	6A06972	134A8	4,674	23	16.46	55.12	55	165	24.8
FSTR	420/85 R30 (TL)	6A05692	140A8	5,520	23	16.46	58.11	60	174	26.1
FSTR	460/85 R30 (TL)	6A05732	145A8	6,400	23	17.91	60.79	66	181	27.2
FSTR	480/70 R30 (TL)	6A06982	141A8	5,677	23	18.90	58.27	55	174	26.2
FSTR	600/70R30 (TL)	6A08132	158A8	9,370	34	23.43	63.19	67	188	28.3
FSTR	620/75 R30 (TL)	6A07032	163A8	10,748	35	24.80	66.73	73	198	29.8
FSTR	210/95 R32 (TL)	6A07292	114A8	2,601	34	8.46	47.83	39	144	21.6
FSTR	230/95 R32 (TL)	6A07302	128A8	3,968	58	9.06	49.41	40	149	22.3
FSTR	270/95 R32 (TL)	6A07312	136A8	4,938	58	10.83	52.36	49	158	23.6
FSTR	650/75 R32 (TL)	6A07042	172A8	13,889	46	25.59	70.67	74	210	31.5
FSTR	420/85 R34 (TL)	6A07202	142A8	5,842	23	16.46	62.13	60	186	27.9
FSTR	460/85 R34 (TL)	6A05742	147A8	6,800	23	17.91	64.80	66	194	29.1
FSTR	480/70 R34 (TL)	6A06992	143A8	6,008	23	18.86	62.20	59	187	28.0
FSTR	340/85 R36 (TL)	6A07222	132A8	4,409	23	13.50	58.86	54	177	26.6
FSTR	340/85 R38 (TL)	6A07232	133A8	4,542	23	13.50	60.83	54	183	27.5
FSTR	380/85 R38 (TL)	6A07242	139A8	5,357	23	14.96	63.43	55	191	28.6
FSTR	420/85 R38 (TL)	6A07252	144A8	6,173	23	16.46	66.10	60	199	29.8
FSTR	460/85 R38 (TL)	6A06582	149A8	7,150	23	17.91	68.78	66	206	30.9
FSTR	480/70 R38 (TL)	6A07002	145A8	6,393	23	18.90	66.34	62	199	29.9
FSTR	520/70 R38 (TL)	6A07012	150A8	7,385	23	20.31	68.90	66	207	31.0



FSTR (continued)

CARLISLE LINE	SIZE PLATE	SKU	PRIMARY LOAD RATING			SW (IN)	OD (IN)	TREAD DEPTH (AT CENTER) 32NDS	ROLLING CIRCUMFERENCE (INCHES)	STATIC LOAD RADIUS (INCHES)
			LOAD INDEX	LOAD CAPACITY (LBS)	PRESSURE (PSI)					
FSTR	520/85 R38 (TL)	6A05792	155A8	8,550	23	20.31	72.80	69	218	32.7
FSTR	580/70 R38 (TL)	6A07022	155A8	8,543	23	22.83	72.05	69	216	32.4
FSTR	600/65 R38 (TL)	6A06782	159D	9,645	35	23.43	68.90	58	207	31.0
FSTR	650/65 R38 (TL)	6A06792	163D	10,748	34	25.59	71.65	72	215	32.2
FSTR	710/70R38 (TL)	6A08142	171D	13,558	34	27.95	77.13	72	231	34.6
FSTR	480/80 R42 (TL)	6A06562	151A8	7,606	23	19.09	72.64	66	218	32.7
FSTR	520/85 R42 (TL)	6A07282	157A8	9,094	23	20.31	76.97	71	231	34.6
FSTR	210/95 R44 (TL)	6A07322	120A8	3,086	34	8.46	59.84	40	181	27.1
FSTR	230/95 R44 (TL)	6A07332	132A8	4,409	58	9.06	61.42	42	186	27.8
FSTR	300/95 R46 (TL)	6A07342	148A8	6,945	58	11.81	68.50	50	207	31.0
FSTR	320/90 R46 (TL)	6A08362	146A8	6,614	46	12.60	68.90	52	208	31.2
FSTR	380/90 R46 (TL)	6A08352	159D	9,645	58	14.96	73.23	57	221	33.1
FSTR	480/80 R46 (TL)	6A08332	164A8	11,023	46	19.09	76.57	66	230	34.6
FSTR	230/95 R48 (TL)	6A07352	136A8	4,938	58	9.06	65.35	45	198	29.6

CSL24

The CSL24 Bias R1 Tires Series offers an angled tread that provides traction and long life. Its excellent grip with enhanced cut and chip resistant tread is designed for use with tractors, sprayers and harvesters.

CARLISLE LINE	SIZE PLATE	SKU	PLY	PRIMARY LOAD RATING			SW (IN)	OD (IN)	TREAD DEPTH (AT CENTER) 32NDS	ROLLING CIRCUMFERENCE (INCHES)	STATIC LOAD RADIUS (INCHES)
				LOAD CAPACITY (LBS)	PRESSURE (PSI)						
CSL24	11.2-24 (TT)	6A05952	6	2,090	26	11.18	43.50	44	130	19.6	
CSL24	11.2-24 (TT)	6A05962	8	2,540	36	11.18	43.50	44	130	19.6	
CSL24	12.4-24 (TT)	6A05982	6	2,400	24	12.40	45.67	43	137	20.5	
CSL24	12.4-24 (TT)	6A05992	8	2,830	32	12.40	45.67	43	137	20.5	
CSL24	13.6-24 (TT)	6A06002	6	2,680	22	13.58	47.64	45	142	21.4	
CSL24	13.6-24 (TT)	6A06012	8	3,080	28	13.58	47.64	45	142	21.4	
CSL24	14.9-24 (TT)	6A06032	6	3,000	20	14.88	49.80	44	149	22.3	
CSL24	14.9-24 (TT)	6A06042	8	3,520	26	14.88	49.80	44	149	22.3	
CSL24	8.3-24 (TT)	6A05912	6	1,570	34	8.27	39.72	31	119	17.8	
CSL24	9.5-24 (TT)	6A05932	6	1,870	30	9.49	41.34	34	124	18.5	
CSL24	14.9-26 (TT)	6A06142	10	4,080	32	14.88	51.77	45	154	23.2	
CSL24	18.4-26 (TT)	6A06072	10	5,200	26	18.39	57.52	47	171	25.7	


HEAVY DUTY, LARGE TRACTOR APPLICATIONS
CSL24 (continued)

CARLISLE LINE	SIZE PLATE	SKU	PLY	PRIMARY LOAD RATING		SW (IN)	OD (IN)	TREAD DEPTH (AT CENTER) 32NDS	ROLLING CIRCUMFERENCE (INCHES)	STATIC LOAD RADIUS (INCHES)
				LOAD CAPACITY (LBS)	PRESSURE (PSI)					
CSL24	23.1-26 (TL)	6A06382	14	7,850	28	23.11	63.19	55	187	28.1
CSL24	11.2-28 (TT)	6A06082	6	2,200	26	11.18	47.44	42	142	21.3
CSL24	12.4-28 (TT)	6A06102	6	2,540	24	12.40	49.61	43	148	22.2
CSL24	12.4-28 (TT)	6A06112	8	3,080	34	12.40	49.61	43	148	22.2
CSL24	13.6-28 (TT)	6A06122	6	2,830	22	13.58	51.57	45	154	23.1
CSL24	13.6-28 (TT)	6A06132	8	3,300	28	13.58	51.57	45	154	23.1
CSL24	14.9-28 (TT)	6A06152	6	3,200	20	14.88	53.74	45	160	24.0
CSL24	14.9-28 (TT)	6A06192	8	3,740	26	14.88	53.74	45	160	24.0
CSL24	16.9-28 (TT)	6A06172	8	4,300	24	16.89	56.50	48	168	25.3
CSL24	16.9-28 (TT)	6A06182	10	4,680	28	16.89	56.50	48	168	25.3
CSL24	14.9-30 (TT)	6A06202	8	3,860	26	14.88	55.71	47	166	24.9
CSL24	14.9-30 (TT)	6A06332	10	4,300	32	14.88	55.71	47	166	24.9
CSL24	16.9-30 (TT)	6A06222	8	4,400	24	16.89	58.46	48	174	26.1
CSL24	16.9-30 (TT)	6A06432	10	4,940	28	16.89	58.46	48	174	26.1
CSL24	18.4-30 (TT)	6A06232	8	4,800	20	18.39	61.02	47	182	27.2
CSL24	18.4-30 (TT)	6A06242	10	5,520	26	18.39	61.02	47	182	27.2
CSL24	16.9-34 (TT)	6A06262	8	4,680	24	16.89	62.40	44	186	27.9
CSL24	16.9-34 (TT)	6A06272	10	5,200	28	16.89	62.40	44	186	27.9
CSL24	18.4-34 (TT)	6A06282	10	6,000	26	18.39	64.96	47	193	29.0
CSL24	12.4-38 (TT)	6A06302	8	3,520	32	12.40	59.65	44	178	26.7
CSL24	13.6-38 (TT)	6A06312	6	3,300	22	13.58	61.61	45	184	27.6
CSL24	15.5-38 (TT)	6A06162	8	4,080	26	15.51	61.81	47	184	27.7
CSL24	16.9-38 (TT)	6A06352	8	4,940	24	16.89	66.34	48	198	29.6
CSL24	18.4-38 (TT)	6A06362	10	6,400	26	18.39	68.90	48	205	30.8
CSL24	18.4-38 (TT)	6A06372	14	7,600	36	18.39	68.90	48	205	30.8



CSL32

The CSL32 Bias R-1 tire is designed with overlapping center tread lugs to deliver maximum strength. This product is designed to provide maximum performance in both wet and dry soil and offers a great size range and traction for older tractors.

				PRIMARY LOAD RATING							
CARLISLE LINE	SIZE PLATE	SKU	PLY	LOAD CAPACITY (LBS)	PRESSURE (PSI)	SW (IN)	OD (IN)	TREAD DEPTH (AT CENTER) 32NDS	ROLLING CIRCUMFERENCE (INCHES)	STATIC LOAD RADIUS (INCHES)	
CSL32	16.9-30 (TT)	6A06502	8	4,400	24	16.89	58.46	48	174	26.1	
CSL32	15.5-38 (TT)	6A06512	8	4,080	26	15.51	61.81	47	184	27.7	
CSL32	16.9-38 (TT)	6A06522	8	4,940	24	16.89	66.34	48	198	29.6	

CSL45

The CSL45 Heavy Duty Skid Steer Series is designed for use in mixed surfaces. The unique tread compound has been formulated to reduce downtime from cuts and punctures.

				PRIMARY LOAD RATING							
CARLISLE LINE	SIZE PLATE	SKU	PLY	LOAD CAPACITY (LBS)	PRESSURE (PSI)	SW (IN)	OD (IN)	TREAD DEPTH (AT CENTER) 32NDS	ROLLING CIRCUMFERENCE (INCHES)	STATIC LOAD RADIUS (INCHES)	
CSL45	10-16.5 (TL)	6A06482	12	5,240	90	11.10	30.51	38	92	13.8	
CSL45	12-16.5 (TL)	6A06492	14	6,780	90	12.60	33.31	43	100	15.0	

CSL48

The CSL48 R3 Diamond Tread tire features a high floatation and turf-friendly design. It's optimal for tractor applications where low ground pressure is required such as golf courses or sandy soil as well as highway use.

				PRIMARY LOAD RATING							
CARLISLE LINE	SIZE PLATE	SKU	PLY	LOAD CAPACITY (LBS)	PRESSURE (PSI)	SW (IN)	OD (IN)	TREAD DEPTH (AT CENTER) 32NDS	ROLLING CIRCUMFERENCE (INCHES)	STATIC LOAD RADIUS (INCHES)	
CSL48	23.1-26 (TL)	6A06452	10	6,400	20	23.11	62.20	35	184	27.6	
CSL48	23.1-26 (TL)	6A06462	12	7,150	24	23.11	62.20	35	184	27.6	
CSL48	23.1-26 (TL)	6A06472	14	7,850	28	23.11	62.20	35	184	27.6	

CSL66

The CSL 66 Loader/Grader Tires feature a center lug design and provide steering stability in soft ground.

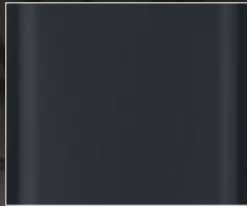
				PRIMARY LOAD RATING							
CARLISLE LINE	SIZE PLATE	SKU	PLY	LOAD CAPACITY (LBS)	PRESSURE (PSI)	SW (IN)	OD (IN)	TREAD DEPTH (AT CENTER) 32NDS	ROLLING CIRCUMFERENCE (INCHES)	STATIC LOAD RADIUS (INCHES)	
CSL66	13.00-24 TG NHS (TL)	6A06602	16	7,150	58	13.19	50.39	29	149	22.4	
CSL66	14.00-24 TG NHS (TL)	6A06612	16	8,050	51	15.04	53.31	31	158	23.7	

Industrial

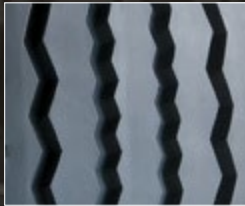
ALL PURPOSE



**INDUSTRIAL
DEEP TRACTION** 56



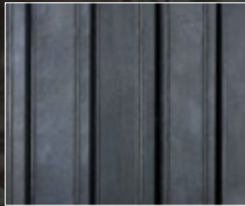
**ROAD
ROLLER** 56



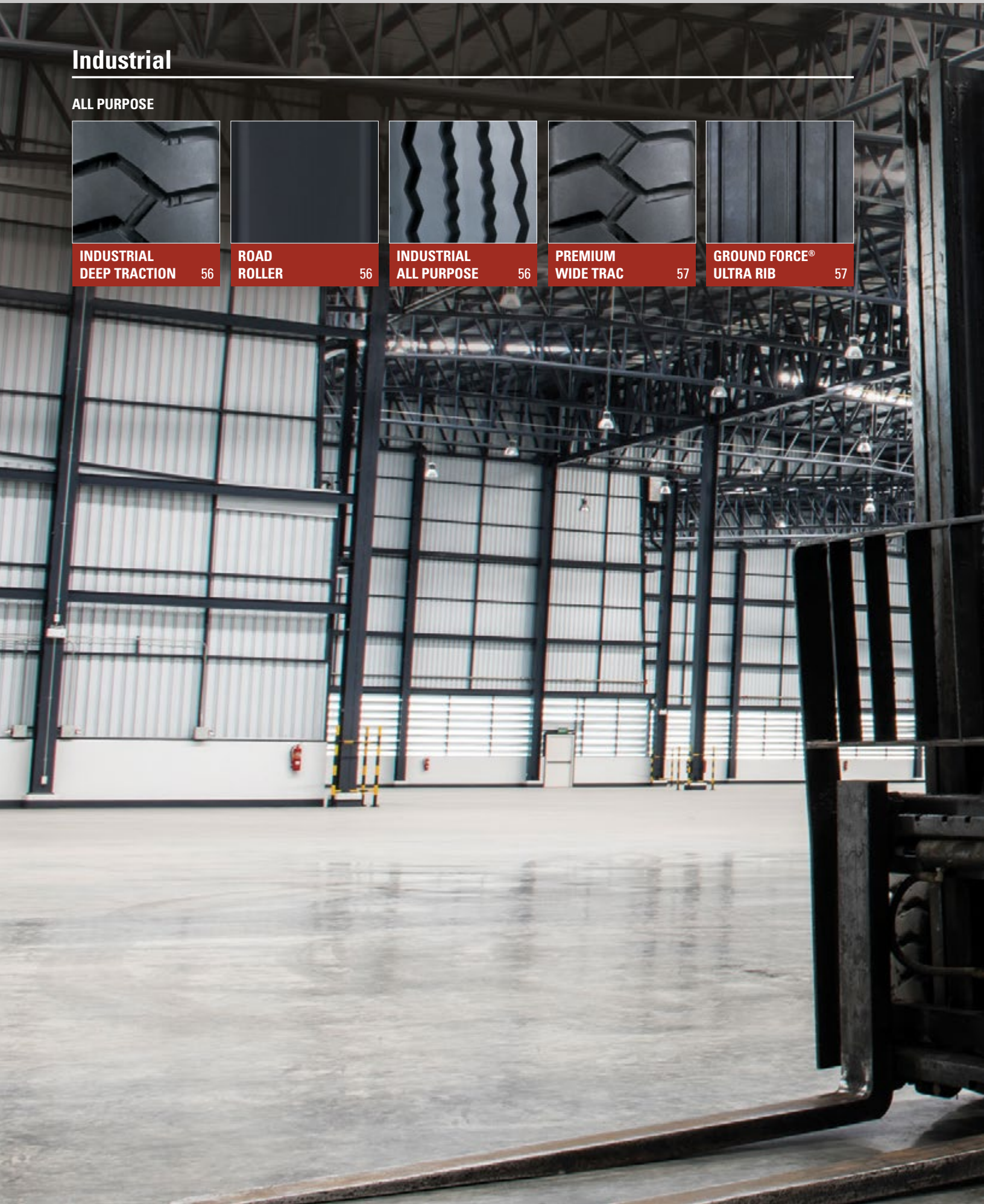
**INDUSTRIAL
ALL PURPOSE** 56



**PREMIUM
WIDE TRAC** 57



**GROUND FORCE®
ULTRA RIB** 57







INDUSTRIAL DEEP TRACTION

ROAD ROLLER

INDUSTRIAL ALL PURPOSE

MATERIAL HANDLING, MINING, COMPACTION AND ROAD PAVING EQUIPMENT
INDUSTRIAL DEEP TRACTION

With its flat tread and reinforced beads, the Industrial Deep Traction tire is an essential standard duty tire that delivers stability and long lasting performance.

SIZE	PRODUCT CODE	PLY RATING	DIAMETER†	WIDTH†	RIM WIDTH	MAX CAPACITY @ 10 MPH	MAX PSI	TIRE WEIGHT	TREAD DEPTH (32nds)
5.70/5.00-8NHS (TT)	60126	8	18.2	5.5	4.5/3.0	1830*	115	11.9	9
6.90/6.00-9NHS (TT)	60101	10	21.9	6.9	5.5/4.0	3715	125	20.3	19
6.50-10NHS (TT)	60105	10	23.4	7.4	5.00	4225	115	25.4	20
7.00-12NHS (TT)	60102	12	27.4	7.8	5.00	5995	125	36.8	21
8.25-15NHS (TT)	60104	12	33.6	9.8	6.50	8680	105	59.4	23
29x8.00-15NHS (TT)	60103	12	29.2	7.5	5.50	6870	125	47.9	25

*NHS™ tires are Non-Highway Service tires. Flap is included for these tube type (TT) tires. Unless otherwise noted, load limits listed are for the Load Wheel on Counter balanced Lift Trucks. Tire load limits will be lower if used on continuous service Industrial Vehicles.

**NOTE: Load limit listed for Steer Wheel on Counterbalanced Lift Truck at 15 MPH.

† Indicates mounted diameter and mounted width

ROAD ROLLER

The Road Roller tire offers a smooth and steady tread for a consistent and leveled ride. With superior heat resistant nylon fabric belts, this tire supports heavy-duty handling with effortless execution.

SIZE	PRODUCT CODE	PLY RATING	DIAMETER†	WIDTH†	RIM WIDTH	MAX CAPACITY @ 10 MPH	MAX PSI	TIRE WEIGHT
7.50-15NHS (TT)*	60127	12	30.9	8.6	6.00	5860	110	44.7
7.50-15NHS (TT)	60128	14	30.9	8.6	6.00	6300	125	49.3
8.5/90-15K (TL)**	58R3A2	6	30.9	8.6	6.00	3900	50	46.9

*For 7.50-15 size tube type. Use 5 degree flat base rim. Flap is included for the tube type (TT) tires.

**For 5 Degree Drop Center Rim only. Flap is included for the tube type (TT) tires.

† Indicates mounted diameter and mounted width

INDUSTRIAL ALL PURPOSE

Designed with two different rib patterns throughout the tread, the Industrial All Purpose tire presents a multi-purpose service of both traction and support with optimized weight distribution for stability with heavy equipment.

SIZE	PRODUCT CODE	PLY RATING	DIAMETER†	WIDTH†	RIM WIDTH	MAX CAPACITY @ 10 MPH	MAX PSI	TIRE WEIGHT	TREAD DEPTH (32nds)
7.50-10 TT	60100	E	25.3	7.6	5.50	1975	90	24.4	12

Flap is included for these tube type (TT) tire.

† Indicates mounted diameter and mounted width



PREMIUM WIDE TRAC

GROUND FORCE ULTRA RIB GSE

MATERIAL HANDLING, MINING, COMPACTION AND ROAD PAVING EQUIPMENT

PREMIUM WIDE TRAC

The Premium Wide Trac tire offers superior level design with an extra heavy-duty sidewall for material handling applications. Its durable construction resists abrasions in sever conditions to maximize efficiency.

SIZE	PRODUCT CODE	PLY RATING	DIAMETER†	WIDTH†	RIM WIDTH	MAX CAPACITY @ 10 MPH	MAX PSI	TIRE WEIGHT	TREAD DEPTH (32nds)
5.70/5.00-8NHS (TT)	60118	8	18.2	5.4	3.00	1930	120	15.0	17
5.70/5.00-8NHS (TT)	60122	10	18.5	5.5	4.5/3.0	2340	150	15.5	17
6.90/6.00-9NHS (TT)	60110	10	22.2	6.0	4.00	3715	125	28.6	32
6.50-10NHS (TT)	60116	10	23.8	7.1	5.00	4225	115	37.8	32
7.00-12NHS (TT)	60111	12	27.3	7.5	5.00	7690	125	51.5	32
8.25-15NHS (TT)	60121	14	33.6	9.8	6.50	5995	120	85.4	24
28x9.00-15NHS (TT)	60119	12	27.3	8.8	7.00	6880	120	52.7	18
28x9.00-15NHS (TT)	60120	14	27.3	8.9	7.00	7530	140	53.5	18
2.50-15NHS (TT)	60123	18	29.1	9.1	7.50	10100	150	70.4	24
3.00-15NHS (TT)	60124	20	32.7	11.3	8.00	14500	135	120.2	26
28x12.00-15NHS (TT)	60115	20	28.1	11.5	9.75	10800	150	86.0	24
7.50-16.00NHS (TT)	60125	12	32.3	8.5	6.00	8000	115	57.1	22

Flap is included for these tube type (TT) tires.

Unless otherwise noted, load limits listed are for the Load Wheel on Counterbalanced Lift Trucks.

Tire load limits will be lower if used on continuous service Industrial Vehicles.

† Indicates mounted diameter and mounted width

GROUND FORCE® ULTRA RIB GSE

Combined with a sturdy rib tread pattern and premium tread compounds, the Ground Force Ultra Rib GSE tire is specially designed for optimal performance on ground support equipment.

SIZE	PRODUCT CODE	PLY RATING	DIAMETER†	WIDTH†	RIM WIDTH	MAX CAPACITY @ 10 MPH	MAX PSI	TIRE WEIGHT	TREAD DEPTH (32nds)
4.80-8NHS (TT)	60133	8	16.5	4.8	3.80	1160	145	10.7	11
5.70-8NHS (TT)	60132	8	18.4	5.9	3.80	1470	120	12.8	11
6.50-10NHS (TT)	60109	10	23.2	7.1	5.00	2535	115	28.6	24
6.90-6.00-9NHS (TT)	60131	10	21.6	6.8	4.00	2200	125	26.0	24
9.00-10NHS (TT)	60108	10	27.2	9.7	6.00	3720	85	34.5	9
175/80D13NHS (TL)	52N3T9	8	23.7	6.1	5.00	2070	115	27.4	24

A flap is included for the Ground Force Ultra Rib GSE Tube Type (TT) tires.

*NHS" tires are Non-Highway Service tires.

† Indicates mounted diameter and mounted width



PROPOSITION 65

California's Proposition 65, also known as the Safe Drinking Water and Toxic Enforcement Act of 1986, requires the Governor of California to publish a list of chemicals known by the state to cause cancer, birth defects or other reproductive harm. The complete list of Prop 65 chemicals is available here:

http://www.oehha.ca.gov/prop65/prop65_list/Newlist.html

This notice is intended to warn Carlstar's customers that some products distributed by the Carlstar Group in California contain chemicals that are included on California's Prop 65 list. Such products include:

Tires	alpha-styrene, butadiene, cadmium, carbon black	cancer / reproductive harm
Wheels	cadmium, beryllium, hexavalent chromium	cancer / reproductive harm
Valve Stems	carbon black	cancer
Sealant	ethylene glycol	reproductive harm

which is [are] known to the State of California to cause both cancer and birth defects or other reproductive harm. For more information go to www.P65Warnings.ca.gov.

The Carlstar Group has chosen to provide this warning based on its knowledge about the presence of one or more Prop 65 chemicals in its products. The Carlstar Group has not attempted to evaluate the level of possible exposure. Products distributed by the Carlstar Group may contain listed chemicals at levels that are below the Proposition 65 level of concern, or could even be zero. Out of an abundance of caution, the Carlstar Group has elected to place the Proposition 65 warning notification on all its products that contain chemicals identified on California's Prop 65 list.



UNITED STATES

- Aiken, SC
- Clinton, TN
- Edwardsville, KS
- Kent, WA
- Fontana, CA
- Franklin (Nashville), TN
- Jackson, TN
- McDonough, GA
- Slinger, WI



Budapest, Hungary

Meizhou, China



Corporate Office

The Carlstar Group, LLC

725 Cool Springs Blvd.

Suite 500

Franklin, TN 37067

Tel: **+1 615-503-0220**

Email: **brand@carlstargroup.com**

© 2020 The Carlstar Group, LLC.

All rights reserved.

Revision 02/20. Part #CSL-L-2004

Customer Service:

USA

Tel: **+1 800-827-1001**

Email: **orders@carlstargroup.com**

Warranty Department:

Tel: **+1 800-260-7959**

Email: **customer.care@carlstargroup.com**

Canada

Waterloo Tel: **1(800)265-6155**

Edmonton Tel: **1(877)842-6275**

AUTHORIZED CARLSTAR DISTRIBUTOR

