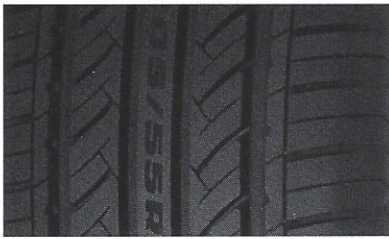
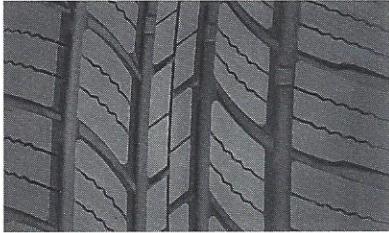


PASSENGER CAR



ECONOMY RADIAL TIRES
ER-700



PASSENGER TOURING TIRES
TRG-750



HIGH PERFORMANCE



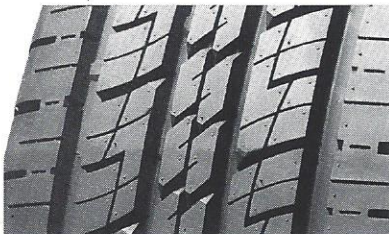
HIGH PERFORMANCE TIRES
HPZ-01



HIGH PERFORMANCE TIRES
HPZ-01+



LIGHT TRUCK/SUV



RADIAL SUV TIRES
SVT-01



ALL TERRAIN LIGHT TRUCK TIRES
ATX-750



ALL TERRAIN LIGHT TRUCK TIRES
ATX-850



LIGHT TRUCK HIGHWAY TERRAIN TIRES
HTR-800





ARGUS ADVANTA[®]

ER-700

ECONOMY RADIAL TIRES

Superior Traction:

- Symmetrical tread design provides increased dry, wet and light snow traction.

Solid Center Rib:

- Improves on-line steering feel, stability and tread wear.

High-Speed Maneuverability:

- High angle tread blocks designed to extend the contact patch combined with symmetrical tread design enhance high speed cornering and stability.
- 45,000-mile limited treadwear warranty.



ARGUS ADVANTA is a registered trademark of American Pacific Industries, Inc.

Part Number	Tire Size	Load Index	Speed Symbol	Load Range	UTQG	Tread Depth 32nds	Side-wall	Rim Width Range (in.)	Overall Width (in.)	Overall Diameter (in.)	Max Load Single/Dual (lbs.)	Tire Weight (lbs.)
ER700230	175/70R13	82	T	STD	460AB	10	BLK	5.0	6.97	22.68	1047	14.2
ER700235	185/70R13	86	T	STD	460AB	10	BLK	5.5	7.44	23.23	1168	15.3
ER700105	175/65R14	82	H	STD	420AA	10	BLK	5.0	6.97	22.99	1047	15.2
ER700240	175/70R14	84	T	STD	460AB	10	BLK	5.0	6.97	23.70	1102	15.6
ER700100	185/60R14	82	H	STD	420AA	10	BLK	5.5	7.44	22.76	1047	15.7
ER700110	185/65R14	82	H	STD	420AA	10	BLK	5.5	7.44	23.46	1047	16.1
ER700115	185/70R14	88	T	STD	460AB	10	BLK	5.5	7.44	24.25	1235	17.2
ER700250	195/60R14	86	H	STD	420AA	10	BLK	6.0	7.91	23.23	1168	17.1
ER700120	195/70R14	91	T	STD	460AB	10	BLK	6.0	7.91	24.80	1356	19.0
ER700245	205/70R14	95	T	STD	460AB	10	BLK	6.0	8.23	25.35	1521	21.1
ER700255	175/65R15	84	H	STD	420AA	10	BLK	5.0	6.97	23.98	1102	16.0
ER700275	185/55R15	82	H	STD	420AA	10	BLK	6.0	7.64	23.03	1047	16.1
ER700125	185/60R15	84	H	STD	420AA	10	BLK	5.5	7.44	23.74	1102	17.2
ER700135	185/65R15	88	H	STD	420AA	10	BLK	5.5	7.44	24.45	1235	17.0
ER700280	195/55R15	85	V	STD	420AA	10	BLK	6.0	7.91	23.43	1135	17.4
ER700130	195/60R15	88	H	STD	420AA	10	BLK	6.0	7.91	24.21	1235	18.3
ER700140	195/65R15	91	H	STD	420AA	10	BLK	6.0	7.91	25.00	1356	19.4
ER700265	205/60R15	91	H	STD	420AA	10	BLK	6.0	8.23	24.69	1356	19.4
ER700145	205/65R15	94	H	STD	420AA	10	BLK	6.0	8.23	25.47	1477	21.2
ER700150	205/70R15	96	S	STD	460AB	10	BLK	6.0	8.23	26.34	1565	23.3
ER700270	215/60R15	94	H	STD	420AA	10	BLK	6.5	8.70	25.16	1477	20.3
ER700260	215/65R15	96	H	STD	420AA	10	BLK	6.0-7.5	8.7	26.02	1565	23.68
ER700155	215/70R15	98	T	STD	460AB	10	BLK	6.5	8.70	26.89	1653	24.6
ER700300	195/55R16	87	H	STD	420AA	10	BLK	6.0	7.91	24.41	1201	17.9
ER700310	205/50R16	87	V	STD	420AA	10	BLK	6.5	8.43	24.09	1201	18.6
ER700160	205/55R16	91	V	STD	420AA	10	BLK	6.5	8.43	24.88	1356	20.7
ER700170	205/60R16	92	V	STD	420AA	10	BLK	6.0	8.23	25.67	1389	20.9
ER700285	205/65R16	95	H	STD	420AA	10	BLK	6.0	8.23	26.46	1521	21.9
ER700165	215/55R16	97	H	XL	420AA	10	BLK	7.0	8.90	25.28	1609	22.0
ER700175	215/60R16	95	V	STD	420AA	10	BLK	6.5	8.70	26.14	1521	22.9
ER700185	215/65R16	98	T	STD	420AA	10	BLK	6.5	8.70	27.01	1653	24.9
ER700315	225/50R16	92	H	STD	420AA	10	BLK	6.5	9.17	24.88	1389	21.5
ER700305	225/55R16	99	H	XL	420AA	10	BLK	7.0	9.17	25.75	1709	24.1
ER700180	225/60R16	98	H	STD	420AA	10	BLK	6.5	8.98	26.61	1653	24.5
ER700290	225/65R16	100	T	STD	460AB	10	BLK	6.5	8.98	27.48	1764	24.9
ER700295	235/65R16	103	T	STD	460AB	10	BLK	7.0	9.45	28.03	1929	26.2
ER700200	215/55R17	94	V	STD	420AA	10	BLK	7.0	8.90	26.30	1477	22.4
ER700210	215/60R17	96	T	STD	460AB	10	BLK	6.5	8.70	27.17	1565	24.4
ER700220	215/65R17	99	T	STD	460AB	10	BLK	6.5	8.70	28.04	1709	25.3
ER700190	225/45R17	94	W	XL	420AA	10	BLK	6.5	8.86	24.97	1477	24.2
ER700195	225/50R17	94	V	STD	420AA	10	BLK	7.0	9.17	25.91	1477	23.5
ER700205	225/55R17	97	V	STD	420AA	10	BLK	7.0	9.17	26.78	1609	24.6
ER700215	225/60R17	99	T	STD	460AB	10	BLK	6.5	8.98	27.64	1709	26.4
ER700225	225/65R17	102	T	STD	460AB	10	BLK	6.5	8.98	28.51	1874	26.6
ER700325	235/45R17	95	H	STD	420AA	10	BLK	7.5-9.0	9.29	25.35	1477	22.94
ER700320	235/55R17	99	H	STD	420AA	10	BLK	6.5-8.5	9.65	27.17	1709	26.53
ER700340	225/50R18	95	H	STD	420AA	10	BLK	6.0-8.0	9.17	26.89	1521	24.47
ER700345	235/50R18	97	H	STD	420AA	10	BLK	6.5-8.5	9.65	27.28	1609	26.45
ER700335	235/55R18	100	V	STD	420AA	10	BLK	6.5-8.5	9.65	28.15	1764	27.83
ER700330	235/60R18	103	H	STD	420AA	10	BLK	6.5-8.5	9.45	29.09	1929	28.99



ARGUS ADVANTA[®]

TRG-750

PASSENGER TOURING TIRES

- Fits Broadline sedans, coupes, compacts and vans with speed rated sizing for today's popular vehicle fitments
- Technology-driven tread design for superior all-weather performance
- Precision engineered for even wear and long tread life
- Full-depth siping for long lasting wet and snow traction
- Notched center rib with multi-element blading for improved handling and steering response
- 60,000 mile treadwear warranty T rated
- 50,000 mile treadwear warranty H/V rated

ARGUS ADVANTA is a registered trademark of American Pacific Industries, Inc.



TRG-750



Part Number	Tire Size	Load Index	Speed Symbol	Load Range	UTQG	Tread Depth 32nds	Side-wall	Rim Width Range (in.)	Overall Width (in.)	Overall Diameter (in.)	Max Load Single/Dual (lbs.)	Tire Weight (lbs.)
TRG750100	185/65R14	86	T	STD	500AB	10	SBL	5.0-6.5	7.44	23.46	1168	16.8
TRG750105	185/60R15	84	T	STD	500AB	10	SBL	5.0-6.5	7.44	23.74	1102	18.5
TRG750115	185/65R15	88	T	STD	500AB	10	SBL	5.0-6.5	7.44	24.45	1235	17.6
TRG750110	195/60R15	88	H	STD	460AA	10	SBL	5.5-7.0	7.91	24.21	1235	18.4
TRG750120	195/65R15	91	T	STD	500AB	10	SBL	5.5-7.0	7.91	25.00	1356	20.3
TRG750125	205/65R15	94	T	STD	500AB	10	SBL	5.5-7.5	8.23	26.46	1477	21.7
TRG750135	205/70R15	96	T	STD	500AB	10	SBL	5.0-7.0	8.70	26.89	1565	23.7
TRG750140	215/70R15	98	T	STD	500AB	10	SBL	5.5-7.0	8.23	26.34	1653	25.2
TRG750145	205/55R16	91	H	STD	460AA	10	SBL	5.5-7.5	8.43	24.88	1356	21.3
TRG750155	205/60R16	92	H	STD	460AA	10	SBL	5.5-7.5	8.70	25.16	1389	21.6
TRG750175	205/65R16	95	H	STD	460AA	10	SBL	5.5-7.5	8.70	27.01	1521	21.5
TRG750150	215/55R16	97	H	STD	460AA	10	SBL	6.0-7.5	8.90	25.28	1609	23.4
TRG750160	215/60R16	95	T	STD	500AB	10	SBL	6.0-7.5	8.70	26.14	1521	24.3
TRG750130	215/65R16	98	T	STD	500AB	10	SBL	6.0-7.5	8.23	25.47	1653	25.0
TRG750165	225/60R16	98	T	STD	500AB	10	SBL	6.0-8.0	8.70	27.17	1653	25.4
TRG750180	225/65R16	100	T	STD	500AB	10	SBL	6.0-8.0	8.98	27.48	1764	25.9
TRG750185	235/65R16	103	T	STD	500AB	10	SBL	6.5-8.5	9.45	28.03	1929	26.7
TRG750190	205/50R17	89	V	STD	380AA	10	SBL	5.5-7.5	8.43	25.12	1279	21.3
TRG750230	215/45R17	91	H	XL	460 A A	10	BLK	7.0-8.0	8.39	24.65	1356	19.92
TRG750195	215/50R17	95	V	XL	380 A A	10	BLK	6.50-7.50	8.9	25.52	1521	22.7
TRG750205	215/55R17	94	V	STD	380AA	10	SBL	6.0-7.5	8.90	26.30	1477	24.6
TRG750215	215/60R17	96	T	STD	500AB	10	SBL	6.0-7.5	8.98	27.64	1565	25.3
TRG750200	225/50R17	94	V	STD	380AA	10	SBL	6.0-8.0	9.17	25.91	1477	25.4
TRG750210	225/55R17	97	T	STD	500AB	10	SBL	6.0-8.0	9.17	26.77	1609	25.8
TRG750220	225/60R17	99	T	STD	500AB	10	SBL	6.0-8.0	8.98	26.61	1709	26.4
TRG750225	225/65R17	102	T	STD	500AB	10	SBL	6.0-8.0	8.98	28.50	1653	30.0
TRG750245	225/45ZR18	95	W	XL	380 A A	10	BLK	7.0-8.5	8.86	25.94	1521	23.21
TRG750235	225/50R18	95	H	STD	460 A A	10	BLK	6.0-8.0	9.17	26.89	1521	25.09
TRG750240	235/50ZR18	97	W	STD	380 A A	10	BLK	6.5-8.5	9.65	27.28	1609	26.32
TRG750255	245/40ZR18	97	W	XL	380 A A	10	BLK	8.0-9.5	9.76	25.71	1609	24.67
TRG750250	245/45ZR18	100	W	XL	380 A A	10	BLK	7.5-9.0	9.57	26.65	1764	25.64
TRG750260	225/55R19	99	H	STD	460 A A	10	BLK	6.0-8.0	9.17	28.78	1709	25.57
TRG750265	235/55R19	101	H	STD	460 A A	10	BLK	6.5-8.5	9.65	29.17	1819	31.97
TRG750270	255/60R19	109	H	STD	460 A A	10	BLK	7.0-9.0	10.24	31.06	2271	33.51



ARGUS ADVANTA[®]

HPZ-01

HIGH PERFORMANCE TIRES

- Outstanding Ride Control:
Tread designed for stability with a large contact patch
- Noise treated tread design for an exceptionally quiet ride
- All season design and M&S rated for all driving conditions
- Exceptional wet and dry performance in all weather conditions
- 40,000-mile limited treadwear warranty

ECOSAFE[™]

ARGUS ADVANTA is a registered trademark of American Pacific Industries, Inc.



Part Number	Tire Size	Load Index	Speed Symbol	Load Range	UTQG	Tread Depth 32nds	Side-wall	Rim Width Range	Overall Width (in.)	Overall Diameter (in.)	Max Load Single/Dual (lbs.)	Tire Weight (lbs.)
1951359352	225/35ZR19	88	W		420 AA A	10	BLK	7.0 - 8.5	9.1	25.2	1235	22.3
1951359402	225/40ZR19 XL	93	W	XL	420 AA A	10	BLK	8-9.5	9	26.1	1433	23.7
1951359552	225/55R19 SL	99	H	SL	420 AA A	10	BLK	6-8	10	28.8	1709	27.1
1951359353	235/35ZR19 XL	91	W	XL	420 AA A	10	BLK	7-8.5	9	25.5	1356	23.9
1951359354	245/35ZR19 XL	93	W	XL	420 AA A	10	BLK	8-9.5	10	25.8	1433	24.6
1951359404	245/40ZR19 XL	98	W	XL	420 AA A	10	BLK	8-9.5	10	26.7	1653	25.9
1951359454	245/45ZR19 XL	102	W	XL	420 AA A	10	BLK	7.50-9	10	27.7	1875	27.1
1951359355	255/35ZR19 XL	96	W	XL	420 AA A	10	BLK	8-9.5	11	26	1565	25.5
1951359455	255/45ZR19	104	W	XL	420 AA A	10	BLK	8.0- 9.5	10.0	28.1	1984	29.6
1951359307	275/30ZR19	96	W		420 AA A	10	BLK	9.0 - 10.0	10.9	25.6	1565	26.1
1951350302	225/30ZR20 XL	85	W	XL	420 AA A	10	BLK	7.5-9	9	25.4	1135	21.9
1951350352	225/35ZR20 XL	90	W	XL	420 AA A	10	BLK	7.5-9	9	26.2	1323	21.9
1951350353	235/35ZR20	88	Y		420 AA A	10	BLK	7.5 -9.0	9.5	26.5	1235	25.0
1951350304	245/30ZR20 XL	90	W	XL	420 AA A	10	BLK		10	25.8	1323	24.7
1951350354	245/35ZR20 XL	95	W	XL	420 AA A	10	BLK	8.5-10	10	26.8	1521	25.7
1951350404	245/40ZR20 XL	99	W	XL	420 AA A	10	BLK	8-9.5	10	27.7	1709	27.1
1951350454	245/45ZR20 SL	99	W	SL	420 AA A	10	BLK	8-9.5	10	28.7	1709	28
1951350504	245/50R20	102	V		420 AA A	10	BLK	8.0 -9.5	9.5	26.5	1874	30.7
1951350355	255/35ZR20 XL	97	W	XL	420 AA A	10	BLK	8.5-10	11	27	1609	26.4
1951350455	255/45ZR20 XL	105	W	XL	420 AA A	10	BLK	8-9.5	10	29.1	2039	29.4
1951350307	275/30ZR20 XL	97	W	XL	420 AA A	10	BLK	9-10	11	26.5	1609	27.4
1951350357	275/35ZR20	102	W	XL	420 AA A	10	BLK	9.0 - 11.0	10.9	27.6	1874	29.6
1951352407	275/40ZR20 XL	106	W	XL	420 AA A	10	BLK	9-11	11	28.7	2094	30.9
1951350457	275/45R20 XL	110	V	XL	420 AA A	10	BLK	8.5-10.5	11	29.8	2337	32.2
1951350557	275/55R20 XL	117	V	XL	420 AA A	10	BLK	7.5-9.5	12	31.9	2833	36.6
1951350258	285/25ZR20	93	W		420 AA A	10	BLK	9.5 -10.5	11.6	25.6	1433	28.2
1951350351	315/35ZR20	110	W	XL	420 AA A	10	BLK	10.5 - 12.5	12.6	28.7	2337	34.4
1951352305	255/30ZR22 XL	95	W	XL	420 AA A	10	BLK		11	28.1	1521	25.6
1951352306	265/30ZR22 XL	97	W	XL	420 AA A	10	BLK		11	28.3	1609	29.3
1951352355	265/35ZR22 XL	102	W	XL	420 AA A	10	BLK	9.5-10.5	11	29.3	1874	30.3
1951352406	265/40R22	106	V	XL	420 AA A	10	BLK	9.0 - 10.5	10.7	30.4	2094	32.2
1951352258	285/25ZR22	95	W		420 AA A	10	BLK	9.0 -10.5	11.6	27.6	1521	30.9
1951352458	285/45ZR22 XL	114	W	XL	420 AA A	10	BLK	9-10.5	12	32.1	2601	35.3
1951352259	295/25ZR22 XL	97	W	XL	420 AA A	10	BLK		12	27.8	1609	31.8
1951352400	305/40ZR22 XL	114	W	XL	420 AA A	10	BLK	10-12	13	31.6	2601	40.1
1951352450	305/45R22 XL	118	V	XL	420 AA A	10	BLK	9.5-11.5	12	32.8	2910	40.4
1951354305	255/30ZR24 XL	97	W	XL	420 AA A	10	BLK	8.5-9.5	11	30.1	1609	30.4
1951354257	275/25ZR24 XL	96	W	XL	420 AA A	10	BLK	9.5-10.5	11	29.5	1565	30.9
1951354359	295/35R24	110	V	XL	420 AA A	10	BLK	10.0 - 12.0	11.9	32.1	2337	37.5
1951354450	305/35R24 XL	112	V	XL	420 AA A	10	BLK	10-12	13	32.4	2469	41
1951356257	275/25ZR26 XL	98	W	XL	420 AA A	10	BLK	9.5-10.5	11	31.4	1653	34.1
1951356309	295/30ZR26 XL	107	W	XL	420 AA A	10	BLK		12	33	2149	38.3
1951356300	305/30R26 XL	109	V	XL	420 AA A	10	BLK		13	33.2	2271	41.6



30-DAY "SATISFACTION ASSURED" GUARANTEE

Argus Advanta hereby warrants every new Argus Advanta tire bearing a complete description as required by DOT and manufactured AFTER August 1, 2014 (DOT date code 3414) to be free from workmanship and material related conditions that would cause the tire to become unserviceable for the life of the original tread of a new tire less 2/32". The life of the original usable tread ends when the tire tread has worn down to 2/32" remaining, at which point the tire is considered to be fully worn out. Argus Advanta will replace tire with a new Argus Advanta tire for qualifying warranty claims. All Exclusions listed below void this replacement warranty. Conditions and coverage are subject to change at any time and without notice.

- A. The worn Argus Advanta tire must be replaced with a comparable new Argus Advanta tire by an authorized Argus Advanta dealer. Copy of invoice will be required.
- B. Replacement applies to new first quality tires only. Retreads, tires unserviceable due to Road Hazard and tires described under Exclusions below are not covered.
- C. Adjustments on ride complaints or out of round tires are excluded from this warranty if they are worn past 2/32" from the original usable tread of the new tire.
- D. Written documentation of tire rotation every 6 months or 6,000 miles is required.

30 DAY "SATISFACTION ASSURED" GUARANTEE

All Argus Advanta passenger car and light truck tires are covered by the 30 Day "Satisfaction Assured" trial period. If, for any reason, other than an excluded condition listed in the respective tire's Standard Warranty, you are not satisfied with your new set of tires within 30 days of date of purchase - or the first 2/32nds of tread wear as measured in the fastest wearing groove (whichever comes first) - you may exchange all or any one of them for the same number of the same design or similar design Advanta manufactured tires. Mounting and balancing are free of charge (excluding online orders). Owner pays all applicable taxes. If you wish to exchange for another set of Advanta manufactured tires that have a higher cost, you must pay the upgrade from the original purchase price, including shipping and all applicable taxes. If you wish to exchange for another set of tires, which is at a lower cost, you will receive a credit (excluding FET) for the difference in cost. This Satisfaction Assurance guarantee only applies to the original new set of manufactured passenger and light truck tires purchased and not to the replacement tires under this guarantee.

ADMINISTRATION OF THE ASSURED SATISFACTION GUARANTEE

Within the 30 days from the date of purchase or the first 2/32nds tread wear as measured in the fastest wearing groove, you must return your tires to the authorized Advanta brand tire dealer where you purchased your tires. You must present the original sales receipt and proof-of-purchase. Reason for dissatisfaction must be explained to the dealer (i.e., appearance, ride, handling, etc.) and noted on the adjustment claim form.

ADVANTA LIMITED MILEAGE WARRANTY

- A. If an Argus Advanta tire wears evenly down to a tread depth of 2/32 in less than the applicable mileage below and in less than five (5) years from date of manufacture, Advanta will credit the owner a prorated amount on the actual mileage toward the purchase of a new Advanta tire. Costs incurred for mounting, balancing and other service charges are not included in the credit amount and shall be borne by the owner. It is the owner's responsibility to follow the Owner's Obligations listed under the Advanta Limited Warranty. All Exclusions listed below void this Limited Mileage Warranty. Conditions and coverage are subject to change at any time and without notice.
- B. If an Advanta tire is deemed to be adjustable under the Limited Mileage Warranty, then the following procedures must be met.
 - 1. Owner/User must keep updated mileage records on the Mileage Warranty form provided the on Advanta website or at the time of purchase. Tires must be rotated at least every 6,000 miles and documented by the service provider.
 - 2. Original invoice showing purchase of tires must be submitted.
 - 3. Must complete and sign the Mileage Warranty form and submit to an authorized dealer.
 - 4. The worn Advanta tire must be replaced with a comparable new Advanta tire by an authorized dealer. Copy of invoice will be required.

PLACE YOUR ORDER TODAY

24/7 Online Order
usautoforce.com

Fax
800.688.3099

Distributed exclusively by U.S. AutoForce

ARGUS ADVANTA is a registered trademark of American Pacific Industries, Inc.

ROAD HAZARD

Every Argus Advanta HPZ-01 tire that has been irreparably damaged due to a normal road hazard condition (e.g. irreparable cut, puncture, snag, bruise, or impact break) within the first 25% of the original tread depth and within 2 years from the date of purchase, will be replaced free of charge with an equivalent Advanta HPZ-01 tire. Applicable taxes on the new tire and costs of mounting and balancing service shall be borne by the owner. To be eligible, you must present your original invoice showing date of purchase. All Exclusions listed below void this Road Hazard Warranty.

Conditions and coverage are subject to change at any time and without notice.

EXCLUSIONS

- A. All Argus Advanta warranties are limited to the original purchaser and the original vehicle on which they are mounted, and are not assignable to subsequent purchasers or vehicles.
- B. The warranties listed above are applicable only in the United States and Canada and any tire used or equipped on a vehicle registered or operated outside the United States and Canada are not covered by these warranties.
- C. The following is not covered by the warranties listed above:
 - 1. Tire branded or marked "Non-Adjustable" (N/A) or "Blemished" (Blem), or previously adjusted.
 - 2. Failure, damage or irregular wear due to, but not limited to, the following:
 - a) fire, accident or vandalism;
 - b) mechanical condition of vehicle, including improper alignment, improper inflation, wheel imbalance, faulty shocks or brakes;
 - c) misapplication of tire; or
 - d) alteration of the tire, addition of foreign material, transfers from one vehicle to another or any previous damages and/or repairs.
 - 3. Cost of mounting and balance service.
 - 4. Loss of time or use, inconvenience, or any incidental or consequential damages except as prohibited by law.
 - 5. Adjustment on out-of-balance or out-of-round tire is allowed only during the first 2/32" of the original tread. A set of all four (4) tires from the same vehicle claimed for out-of-round will not be accepted.
- D. Any Argus Advanta tire submitted five (5) years or more from the date of manufacture as determined by the DOT Serial number is not covered under the warranties listed above.

REPAIRS AND RETREADING: RATING CHANGES AND CAUTIONS

- A. Repaired, retreaded or altered Argus Advanta tire with "Speed Rating" no longer retain their "Speed Rating".
- B. If the aforementioned tire(s) is repairable, see the recommended repair procedures used by the tire dealer(s) for repairing tubeless passenger car radial tires as detailed and illustrated in the RMA puncture repair procedures.
- C. Repairs must be restricted to the tread area of the tire and not the tire sidewalls.
- D. Do not repair tread area punctures larger than 1/4" in diameter.

OWNER'S OBLIGATIONS

In order to be eligible for Argus Advanta Limited Warranty service, the dealer/owner must:

- A. At the time of purchase, the tires must be properly installed, correct air pressure set and the wheels balanced.
- B. Any tire to be adjusted must be presented to an authorized Argus Advanta dealer.
- C. Present proof of purchase to the satisfaction of the dealer.
- D. Complete and sign an Argus Advanta Warranty Claim Form which is available at any authorized dealer.
- E. Pay the amount due on taxes, mounting and balancing charges or cost of other services ordered.

DISCLAIMER

This warranty, or any warranty stated or referred to herein, is exclusive and in lieu of any other warranty regarding the quality of Argus Advanta Tires, whether expressed or implied, and remedies for breach thereof shall be limited to those specifically provided herein.

TREAD PATTERN	MILES
HPZ-01	40,000

ARGUS ADVANTA[®]



HPZ-01+

HIGH PERFORMANCE TIRES

- Outstanding Ride Control: Tread designed for stability with a large contact.
- Noise treated tread design for an exceptionally quiet ride.
- All-season design and M&S rated for all driving conditions.
- Exceptional wet and dry performance in all weather conditions.
- 60,000-mile limited treadwear warranty.



ECOSAFE

ARGUS ADVANTA is a registered trademark of American Pacific Industries, Inc.



Part Number	Tire Size	Load Index	Speed Symbol	Load Range	UTQG	Tread Depth 32nds	Side-wall	Rim Width Range	Overall Width (in.)	Overall Diameter (in.)	Max Load Single/Dual (lbs.)	Tire Weight (lbs.)
1951337551	215/55ZR17	98	W	XL	420 A A	9	BLK	6-7.5	9	27	1653	21
1951337500	205/50ZR17	93	W	XL	420 A A	9	BLK	5.5-7.5	9	26	1433	21
1951337451	215/45ZR17	91	W	XL	420 A A	9	BLK	7-8	9	25	1356	20
1951337501	215/50R17	95	V	XL	420 A A	9	BLK	6-7.5	9	26	1521	22
1951337452	225/45ZR17	94	W	XL	420 A A	9	BLK	7-8	9	25	1477	22
1951337502	225/50R17	98	W	XL	420 A A	9	BLK	6-8	10	26	1653	23
1951337552	225/55R17	101	V	XL	420 A A	9	BLK	6-8	10	27	1819	24
1951337453	235/45ZR17	97	W	XL	420 A A	9	BLK	7.5-9	10	26	1609	23
1951337503	235/50ZR17	96	W		420 A A	9	BLK	6.5-8.5	10	27	1565	25
1951337553	235/55R17	103	V	XL	420 A A	9	BLK	6.5-8.5	10	28	1929	26
1951338402	225/40ZR18	92	W	XL	420 A A	9	BLK	7.5-9	10	26	1389	21
1951338452	225/45ZR18	95	W	XL	420 A A	9	BLK	7-8.5	9	26	1521	23
1951338403	235/40ZR18	95	W	XL	420 A A	9	BLK	8-9.5	10	26	1521	23
1951338453	235/45ZR18	98	W	XL	420 A A	9	BLK	7.5-9	10	27	1653	25
1951338503	235/50ZR18	101	W	XL	420 A A	9	BLK	6.5-8.5	10	28	1819	26
1951338553	235/55ZR18	104	W	XL	420 A A	9	BLK	6.5-8.5	10	29	1984	27
1951338404	245/40ZR18	97	W	XL	420 A A	9	BLK	8-9.5	10	26	1609	24
1951338454	245/45ZR18	100	W	XL	420 A A	9	BLK	7.5-9	10	27	1764	25



30-DAY "SATISFACTION ASSURED" GUARANTEE

Argus Advanta hereby warrants every new Argus Advanta tire bearing a complete description as required by DOT and manufactured AFTER August 1, 2014 (DOT date code 3414) to be free from workmanship and material related conditions that would cause the tire to become unserviceable for the life of the original tread of a new tire less 2/32". The life of the original usable tread ends when the tire tread has worn down to 2/32" remaining, at which point the tire is considered to be fully worn out. Argus Advanta will replace tire with a new Argus Advanta tire for qualifying warranty claims. All Exclusions listed below void this replacement warranty. Conditions and coverage are subject to change at any time and without notice.

- A. The worn Argus Advanta tire must be replaced with a comparable new Argus Advanta tire by an authorized Argus Advanta dealer. Copy of invoice will be required.
- B. Replacement applies to new first quality tires only. Retreads, tires unserviceable due to Road Hazard and tires described under Exclusions below are not covered.
- C. Adjustments on ride complaints or out of round tires are excluded from this warranty if they are worn past 2/32" from the original usable tread of the new tire.
- D. Written documentation of tire rotation every 6 months or 6,000 miles is required.

30 DAY "SATISFACTION ASSURED" GUARANTEE

All Argus Advanta passenger car and light truck tires are covered by the 30 Day "Satisfaction Assured" trial period. If, for any reason, other than an excluded condition listed in the respective tire's Standard Warranty, you are not satisfied with your new set of tires within 30 days of date of purchase - or the first 2/32nds of tread wear as measured in the fastest wearing groove (whichever comes first) - you may exchange all or any one of them for the same number of the same design or similar design Advanta manufactured tires. Mounting and balancing are free of charge (excluding online orders). Owner pays all applicable taxes. If you wish to exchange for another set of Advanta manufactured tires that have a higher cost, you must pay the upgrade from the original purchase price, including shipping and all applicable taxes. If you wish to exchange for another set of tires, which is at a lower cost, you will receive a credit (excluding FET) for the difference in cost. This Satisfaction Assurance guarantee only applies to the original new set of manufactured passenger and light truck tires purchased and not to the replacement tires under this guarantee.

ADMINISTRATION OF THE ASSURED SATISFACTION GUARANTEE

Within the 30 days from the date of purchase or the first 2/32nds tread wear as measured in the fastest wearing groove, you must return your tires to the authorized Advanta brand tire dealer where you purchased your tires. You must present the original sales receipt and proof-of-purchase. Reason for dissatisfaction must be explained to the dealer (i.e., appearance, ride, handling, etc.) and noted on the adjustment claim form.

ADVANTA LIMITED MILEAGE WARRANTY

- A. If an Argus Advanta tire wears evenly down to a tread depth of 2/32 in less than the applicable mileage below and in less than five (5) years from date of manufacture, Advanta will credit the owner a prorated amount on the actual mileage toward the purchase of a new Advanta tire. Costs incurred for mounting, balancing and other service charges are not included in the credit amount and shall be borne by the owner. It is the owner's responsibility to follow the Owner's Obligations listed under the Advanta Limited Warranty. All Exclusions listed below void this Limited Mileage Warranty. Conditions and coverage are subject to change at any time and without notice.
- B. If an Advanta tire is deemed to be adjustable under the Limited Mileage Warranty, then the following procedures must be met.
 - 1. Owner/User must keep updated mileage records on the Mileage Warranty form provided the on Advanta website or at the time of purchase. Tires must be rotated at least every 6,000 miles and documented by the service provider.
 - 2. Original invoice showing purchase of tires must be submitted.
 - 3. Must complete and sign the Mileage Warranty form and submit to an authorized dealer.
 - 4. The worn Advanta tire must be replaced with a comparable new Advanta tire by an authorized dealer. Copy of invoice will be required.

PLACE YOUR ORDER TODAY

24/7 Online Order

usautoforce.com

Fax

800.688.3099

ARGUS ADVANTA is a registered trademark of American Pacific Industries, Inc.

Distributed exclusively by U.S. AutoForce

ROAD HAZARD

Every Argus Advanta HPZ-01+ tire that has been irreparably damaged due to a normal road hazard condition (e.g. irreparable cut, puncture, snag, bruise, or impact break) within the first 25% of the original tread depth and within 2 years from the date of purchase, will be replaced free of charge with an equivalent Advanta HPZ-01+ tire. Applicable taxes on the new tire and costs of mounting and balancing service shall be borne by the owner. To be eligible, you must present your original invoice showing date of purchase. All Exclusions listed below void this Road Hazard Warranty.

Conditions and coverage are subject to change at any time and without notice.

EXCLUSIONS

- A. All Argus Advanta warranties are limited to the original purchaser and the original vehicle on which they are mounted, and are not assignable to subsequent purchasers or vehicles.
- B. The warranties listed above are applicable only in the United States and Canada and any tire used or equipped on a vehicle registered or operated outside the United States and Canada are not covered by these warranties.
- C. The following is not covered by the warranties listed above:
 - 1. Tire branded or marked "Non-Adjustable" (N/A) or "Blemished" (Blem), or previously adjusted.
 - 2. Failure, damage or irregular wear due to, but not limited to, the following:
 - a) fire, accident or vandalism;
 - b) mechanical condition of vehicle, including improper alignment, improper inflation, wheel imbalance, faulty shocks or brakes;
 - c) misapplication of tire; or
 - d) alteration of the tire, addition of foreign material, transfers from one vehicle to another or any previous damages and/or repairs.
 - 3. Cost of mounting and balance service.
 - 4. Loss of time or use, inconvenience, or any incidental or consequential damages except as prohibited by law.
 - 5. Adjustment on out-of-balance or out-of-round tire is allowed only during the first 2/32" of the original tread. A set of all four (4) tires from the same vehicle claimed for out-of-round will not be accepted.
- D. Any Argus Advanta tire submitted five (5) years or more from the date of manufacture as determined by the DOT Serial number is not covered under the warranties listed above.

REPAIRS AND RETREADING: RATING CHANGES AND CAUTIONS

- A. Repaired, retreaded or altered Argus Advanta tire with "Speed Rating" no longer retain their "Speed Rating".
- B. If the aforementioned tire(s) is repairable, see the recommended repair procedures used by the tire dealer(s) for repairing tubeless passenger car radial tires as detailed and illustrated in the RMA puncture repair procedures.
- C. Repairs must be restricted to the tread area of the tire and not the tire sidewalls.
- D. Do not repair tread area punctures larger than 1/4" in diameter.

OWNER'S OBLIGATIONS

In order to be eligible for Argus Advanta Limited Warranty service, the dealer/owner must:

- A. At the time of purchase, the tires must be properly installed, correct air pressure set and the wheels balanced.
- B. Any tire to be adjusted must be presented to an authorized Argus Advanta dealer.
- C. Present proof of purchase to the satisfaction of the dealer.
- D. Complete and sign an Argus Advanta Warranty Claim Form, which is available at any authorized dealer.
- E. Pay the amount due on taxes, mounting and balancing charges or cost of other services ordered.

DISCLAIMER

This warranty, or any warranty stated or referred to herein, is exclusive and in lieu of any other warranty regarding the quality of Argus Advanta Tires, whether expressed or implied, and remedies for breach thereof shall be limited to those specifically provided herein.

TREAD PATTERN	MILES
HPZ-01+	60,000

ARGUS **ADVANTA**[®]



SVT-01

RADIAL SUV TIRES

- Designed for maximum performance for all sport utility vehicle applications.
- Tread design is noise treated to ensure smooth, quiet ride on all road surfaces.
- Designed for exceptional handling, braking and acceleration.
- Sturdy steel belt construction to ensure stability, durability and long tread life.
- M & S Rated
- 60,000-mile limited treadwear warranty.



ECOSAFE

ARGUS ADVANTA is a registered trademark of American Pacific Industries, Inc.



SVT-01



Part Number	Tire Size	Load Index	Speed Symbol	Load Range	UTQG	Tread Depth 32nds	Side-wall	Rim Width Range (in.)	Overall Width (in.)	Overall Diameter (in.)	Max Load Single/Dual (lbs.)	Tire Weight (lbs.)
1932436715	P215/70R16	99	T	SL	520 A A	11	BLK	5.5 - 7.0	8.7	27.9	1709	27.6
1932436735	P235/70R16	104	T	SL	520 A A	11	BLK	6.0 - 8.0	9.5	29.0	1984	30.7
1932437615	P215/60R17	95	V	SL	520 A A	11	BLK	6.0 - 7.5	8.7	27.2	1521	27.6
1932437625	P225/65R17	100	T	SL	520 A A	11	BLK	6.5 - 8.0	9.0	28.5	1764	29.1
1932437635	P235/65R17	103	T	SL	520 A A	11	BLK	6.5 - 8.0	9.5	29.1	1929	30.9
1932437645	P245/65R17	105	T	SL	520 A A	11	BLK	7.0 - 8.5	9.8	29.5	2039	32.3
1932437745	P245/70R17	108	T	SL	520 A A	11	BLK	6.5 - 8.0	9.8	30.6	2205	33.7
1932437665	P265/65R17	110	T	SL	520 A A	11	BLK	7.5 - 9.5	10.7	30.6	2337	35.8
1932437765	P265/70R17	113	T	SL	520 A A	11	BLK	7.0 - 9.0	10.7	31.7	2535	37.3
1932438255	P225/55R18	97	H	SL	520 A A	11	BLK	6.0 - 8.0	9.2	27.8	1609	28.4
1932438635	P235/60R18	102	T	SL	520 A A	11	BLK	6.5 - 8.5	9.5	29.1	1874	31.6
1932438355	P235/65R18	104	H	SL	520 A A	11	BLK	6.5 - 8.5	9.5	30.0	1984	32.7
1932438645	P245/60R18	104	T	SL	520 A A	11	BLK	7.0 - 8.5	9.8	29.6	1984	32.6
1932438555	P255/65R18	109	H	SL	520 A A	11	BLK	7.0 - 9.0	10.2	31.1	2271	34.5
1932438665	P265/60R18	110	H	SL	520 A A	11	BLK	7.5-9.5	10.7	30.5	2403	36.0
1932438655	P265/65R18	114	T	SL	520 A A	11	BLK	7.5-9.5	10.7	31.5	2601	38.0
1932438765	P265/70R18	114	T	SL	520 A A	11	BLK	7.0 - 9.0	10.7	32.6	2601	39.0
1932438755	P275/65R18	114	H	SL	520 A A	11	BLK	7.5 - 9.5	11.0	32.1	2601	39.8
1932439355	P235/55R19XL	105	V	XL	520 A A	11	BLK	6.5 - 8.5	9.7	29.2	2039	31.6
1932439455	P245/55R19	103	H	SL	520 A A	11	BLK	7.0 - 8.5	10.0	29.7	1929	33.0
1932439655	P255/60R19	109	H	SL	520 A A	11	BLK	7.5-9	10.2	31.1	2271	34.0
1932432575	P275/55R20	117	T	SL	520 A A	11	BLK	7.5 - 9.5	11.2	31.9	2833	43.0
1932432675	P275/60R20	115	T	SL	520 A A	11	BLK	7.5 - 9.5	11.0	33.0	2679	46.0



ARGUS **ADVANTA**®

ATX-750

ALL TERRAIN LIGHT TRUCK TIRES

- 3 Peak Mountain Snowflake Certified (3PMS) for severe snow performance.
- Aggressive open shoulder design increases stability and traction in all weather conditions.
- Stone ejectors withstand harsh road conditions.
- Trapezoidal claw design on the shoulder edge increases traction in snow and mud, dissipates heat and enhances durability.
- Jagged edge tread blocks improve grip on ice and in the mud providing superior traction.
- Zig zag grooves and continuous center block provide outstanding grip and superior handling.
- 50,000 mile limited treadwear warranty P metric rated
- 50,000 mile limited treadwear warranty LT rated.

ARGUS ADVANTA is a registered trademark of American Pacific Industries, Inc.



Part Number	Tire Size	Load Index	Speed Symbol	Load Range	UTQG	Tread Depth 32nds	Side-wall	Rim Width Range (in.)	Overall Width (in.)	Overall Diameter (in.)	Max Load Single/Dual (lbs.)	Tire Weight (lbs.)
ATX750225	31x10.50R15LT	109	S	6/C	-	16	OWL	7.0-9.0	10.54	30.52	2270	40.0
ATX750100	235/75R15	109	S	SL	500AB	13	OWL	6.0-8.0	9.25	28.86	2271	31.5
ATX750105	235/70R16	106	S	SL	500AB	13	OWL	6.0-8.0	9.45	28.98	2094	31.2
ATX750230	245/70R16	107	T	STD	500AB	13	BLK	6.50-8.00	9.76	29.53	2149	30.05
ATX750110	245/75R16	111	S	SL	500AB	13	OWL	6.5-8.0	9.76	30.47	2403	35.2
ATX750120	265/70R16	112	T	SL	500AB	13	OWL	7.0-9.0	10.71	30.63	2469	37.1
ATX750115	265/75R16	116	S	SL	500AB	13	OWL	7.0-9.0	10.51	31.65	2756	38.1
ATX750155	LT225/75R16	115/112	S	10/E	-	16	BSW	6.0-7.0	8.78	29.29	2680/2470	36.6
ATX750175	LT235/85R16	120/116	R	10/E	-	16	BSW	6.0-7.5	9.25	31.73	3042/2778	41.7
ATX750165	LT245/75R16	120/116	S	10/E	-	16	BSW	6.5-8.0	9.76	30.47	3042/2778	41.3
ATX750170	LT265/75R16	123/120	S	10/E	-	16	OWL	7.0-8.0	10.51	31.65	3415/3085	45.2
ATX750160	LT285/75R16	126/123	R	10/E	-	16	OWL	7.5-9.5	11.26	32.83	3750/3415	49.3
ATX750125	245/65R17	107	S	SL	500AB	13	OWL	7.0-8.5	9.76	29.53	2149	33.3
ATX750235	245/70R17	110	T	STD	500AB	13	BLK	6.50-8.00	9.76	30.55	2337	31.15
ATX750130	265/65R17	112	S	SL	500AB	13	OWL	7.5-9.5	10.71	30.55	2469	37.2
ATX750135	265/70R17	115	S	SL	500AB	13	OWL	7.0-9.0	10.71	31.65	2679	39.0
ATX750180	LT235/80R17	120/117	R	10/E	-	16	OWL	6.0-7.5	9.25	31.81	3085/2835	41.5
ATX750185	LT245/70R17	119/116	S	10/E	-	16	OWL	6.5-8.0	9.76	30.55	3000/2755	41.6
ATX750190	LT245/75R17	121/118	S	10/E	-	16	OWL	6.5-7.5	9.76	31.50	3195/2910	42.9
ATX750195	LT265/70R17	121/118	S	10/E	-	16	OWL	7.0-8.5	10.71	31.65	3195/2910	45.6
ATX750200	LT285/70R17	121/118	R	10/E	-	16	OWL	7.5-9.0	11.50	32.76	3195/2910	49.6
ATX750240	255/70R18	113	S	STD	500AB	13	BLK	6.50-8.50	10.24	32.09	2535	34.46
ATX750245	265/65R18	114	T	STD	500AB	13	BLK	7.50-9.50	10.71	31.54	2601	35.21
ATX750205	LT265/70R18	124/121	R	10/E	-	16	BSW	7.0-9.0	10.71	32.64	3525/3195	47.0
ATX750140	275/65R18	116	T	SL	500AB	13	OWL	7.5-9.5	10.98	32.09	2756	39.9
ATX750215	LT275/65R18	123/120	R	10/E	-	16	OWL	7.5-9.0	10.98	32.09	3415/3085	47.5
ATX750210	LT275/70R18	125/122	R	10/E	-	16	OWL	7.0-8.5	10.98	33.19	3640/3305	49.4
ATX750150	275/55R20	117	T	XL	500AB	13	BSW	7.5-9.5	11.18	31.89	2833	40.1
ATX750145	275/60R20	115	T	SL	500AB	13	BSW	7.5-9.5	10.98	32.99	2679	40.8
ATX750220	LT275/65R20	126/123	R	10/E	-	16	BSW	7.5-9.5	10.98	34.09	3750/3415	50.7



ARGUS **ADVANTA**[®]

ATX-850

ALL TERRAIN LIGHT TRUCK TIRES

- Optimized profile shape is specially designed to maximize contact while driving both on and off-road
- Dual A/B pitch design provides excellent on and off-road traction, grip, and wear performance
- Scalloped shoulders and stepped elements provide biting edges for superior off-road traction in mud, sand, and other soft surfaces
- Zig-zag siping provides improved wet traction, element flexibility, and severe weather rated snow traction
- Stone ejector bars help protect the tire by reducing stones and debris from getting trapped reducing noise
- 3 Peak Mountain Snowflake (3PMSF) certified for severe snow performance
- 50,000 mile limited treadwear warranty



Part Number	Tire Size	Load Index	Speed Symbol	Load Range	Ply Rating	Tread Depth 32/nds	Side-wall	Rim Width Range (in.)	Overall Width (in.)	Overall Diameter (in.)	Max Load Single / Dual (lbs.)	Max PSI	Tire Weight (lbs.)	UTQG Rating
ADV3100	235/75R15	109	S	XL	-	12.0	BLK	6.0-7.0	9.3	28.9	2271	51	36.0	500/A/A
ADV3104	235/70R16	106	S	SL	-	12.0	BLK	6.0-8.0	9.4	29.0	2094	44	36.0	500/A/A
ADV3108	245/70R16	111	S	XL	-	13.6	BLK	6.5-8.0	9.8	29.5	2403	51	37.0	500/A/A
ADV3112	255/70R16	111	T	SL	-	13.6	BLK	6.5-8.5	10.2	30.1	2403	44	40.0	500/A/A
ADV3115	255/75R17	115	T	SL	-	13.6	BLK	6.5-8.5	10.0	32.0	2679	44	41.0	500/A/A
ADV3116	265/70R16	112	S	SL	-	13.6	BLK	7.0-9.0	10.7	30.6	2469	44	42.0	500/A/A
ADV3120	245/75R16	111	S	SL	-	13.6	BLK	6.5-8.0	9.8	30.5	2403	44	38.0	500/A/A
ADV3123	245/75R17	112	T	SL	-	13.6	BLK	6.5-8.0	9.8	31.5	2469	44	40.0	500/A/A
ADV3124	265/75R16	116	S	SL	-	13.6	BLK	7.0-9.0	10.5	31.7	2756	44	43.0	500/A/A
ADV3128	245/65R17	107	S	SL	-	13.6	BLK	7.0-8.5	9.8	29.5	2150	44	38.0	500/A/A
ADV3132	255/65R17	110	T	SL	-	13.6	BLK	7.0-9.0	10.2	30.1	2337	44	37.0	500/A/A
ADV3136	265/65R17	112	S	SL	-	13.6	BLK	7.5-9.5	10.7	30.6	2469	44	42.0	500/A/A
ADV3140	245/70R17	110	T	SL	-	13.6	BLK	6.5-8.0	9.8	30.6	2337	44	38.0	500/A/A
ADV3144	255/70R17	112	T	SL	-	13.6	BLK	6.5-8.5	10.2	31.1	2469	44	40.0	500/A/A
ADV3148	265/70R17	115	S	SL	-	13.6	BLK	7.0-9.0	10.7	31.7	2679	44	44.0	500/A/A
ADV3152	P285/70R17	117	T	SL	-	13.6	BLK	7.5-9.5	11.5	32.8	2833	44	43.0	500/A/A
ADV3156	265/60R18	110	T	SL	-	13.6	BLK	7.5-9.5	10.7	30.5	2337	44	41.0	500/A/A
ADV3160	265/65R18	114	T	SL	-	13.6	BLK	7.5-9.5	10.7	31.5	2601	44	40.0	500/A/A
ADV3164	275/65R18	116	T	SL	-	13.6	BLK	7.5-9.5	11.0	32.1	2756	44	46.0	500/A/A
ADV3168	255/70R18	113	T	SL	-	13.6	BLK	6.5-8.5	10.2	32.1	2535	44	39.0	500/A/A
ADV3172	265/70R18	116	T	SL	-	13.6	BLK	7.0-9.0	10.7	32.6	2756	44	45.0	500/A/A
ADV3176	265/50R20	111	T	XL	-	12.0	BLK	7.5-9.5	10.9	30.5	2403	51	41.0	500/A/A
ADV3180	275/55R20	113	S	SL	-	12.0	BLK	7.5-9.5	11.2	31.9	2535	44	46.0	500/A/A
ADV3184	275/60R20	115	T	SL	-	13.6	BLK	7.5-9.5	11.0	33.0	2679	44	47.0	500/A/A
ADV3188	285/45R22	114	H	XL	-	12.0	BLK	9.0-10.5	11.2	32.1	2601	51	42.0	500/A/A
ADV3196	LT235/75R15	104/101	Q	C	6	14.5	BLK	6.0-8.0	9.3	28.9	1985/1820	50	38.0	-
ADV3204	LT225/75R16	115/112	Q	E	10	14.5	BLK	6.0-7.5	8.8	29.3	2680/2470	80	39.0	-
ADV3208	LT245/75R16	120/116	Q	E	10	15.7	BLK	6.5-8.0	9.8	30.5	3042/2778	80	45.0	-
ADV3212	LT265/75R16	123/120	Q	E	10	15.7	BLK	7.0-9.0	10.5	31.7	3415/3085	80	49.0	-
ADV3216	LT285/75R16	126/123	Q	E	10	15.7	BLK	7.5-9.5	11.3	32.8	3750/3415	65	54.0	-
ADV3224	LT235/85R16	120/116	Q	E	10	15.7	BLK	6.0-7.5	9.3	31.7	3042/2778	80	45.0	-
ADV3228	LT245/70R17	119/116	Q	E	10	15.7	BLK	6.5-8.0	9.8	30.6	3000/2755	80	45.0	-
ADV3232	LT265/70R17	121/118	Q	E	10	15.7	BLK	7.0-9.0	10.7	31.7	3195/2910	80	49.0	-
ADV3236	LT285/70R17	121/118	Q	D	8	15.7	BLK	7.5-9.5	11.5	32.8	3195/2910	80	55.0	-
ADV3239	LT285/75R17	121/118	S	E	10	15.7	BLK	7.5-9.5	11.3	33.9	3195/2910	80	62.0	-
ADV3240	LT315/70R17	121/118	Q	E	10	15.7	BLK	8.0-10.5	12.7	34.4	3195/2910	65	64.0	-
ADV3244	LT245/75R17	121/118	Q	E	10	15.7	BLK	6.5-8.0	9.8	31.5	3195/2910	80	46.0	-
ADV3248	LT235/80R17	120/117	Q	E	10	15.7	BLK	6.0-8.0	9.3	31.8	3085/2835	80	44.0	-
ADV3252	LT275/65R18	123/120	Q	E	10	15.7	BLK	8.0-9.5	11.0	32.1	3415/3085	80	50.0	-
ADV3256	LT285/65R18	125/122	S	E	10	15.7	BLK	8.5-10.0	11.5	32.6	3640/3305	80	54.0	-
ADV3257	LT265/65R18	122/119	R	E	10	15.7	BLK	8.0-9.5	10.7	31.5	3305/3000	80	51.0	-
ADV3259	LT285/75R18	129/126	S	E	10	15.7	BLK	7.5-9.5	11.3	34.8	4080/3750	80	64.0	-
ADV3260	LT265/70R18	124/121	S	E	10	15.7	BLK	7.0-9.0	10.7	32.6	3525/3195	80	51.0	-
ADV3264	LT275/70R18	125/122	Q	E	10	15.7	BLK	7.0-9.0	11.0	33.2	3640/3305	80	52.0	-
ADV3268	LT295/70R18	129/126	S	E	10	15.7	BLK	7.5-10.0	11.8	34.3	4080/3750	80	61.0	-
ADV3272	LT285/55R20	122/119	S	E	10	15.7	BLK	8.5-10.0	11.7	32.4	3305/3000	80	53.0	-
ADV3275	LT295/65R20	129/126	S	E	10	15.7	BLK	8.5-10.5	11.8	35.1	4080/3750	80	66.0	-
ADV3276	LT265/60R20	121/118	S	E	10	15.7	BLK	8.0-9.5	10.7	32.5	3195/2910	80	52.0	-
ADV3280	LT285/60R20	125/122	S	E	10	15.7	BLK	8.5-10.0	11.5	33.5	3640/3305	80	59.0	-
ADV3282	LT275/55R20	120/117	T	E	10	15.7	BLK	8.0-9.5	11.2	31.9	3085/2835	80	51.0	-
ADV3285	LT275/60R20	123/120	T	E	10	15.7	BLK	8.0-9.5	11.0	33.0	3415/3085	80	52.0	-
ADV3288	LT275/65R20	126/123	Q	E	10	15.7	BLK	8.0-9.5	11.0	34.1	3750/3415	80	54.0	-
ADV3304	31x10.50R15LT	109	Q	C	6	15.7	BLK	7.0-9.0	10.6	30.5	2270	50	46.0	-
ADV3308	35x12.50R17LT	121	Q	E	10	15.7	BLK	8.0-10.5	12.5	34.5	3195	65	64.0	-
ADV3312	35x12.50R18LT	123	Q	E	10	15.7	BLK	8.5-11.0	12.5	34.5	3415	65	67.0	-
ADV3316	33x12.50R20LT	119	Q	F	12	15.7	BLK	8.5-11.0	12.5	32.5	3000	65	60.0	-
ADV3320	35x12.50R20LT	125	Q	F	12	15.7	BLK	8.5-11.0	12.5	34.5	3640	65	63.0	-
ADV3324	33x12.50R22LT	114	Q	F	12	15.7	BLK	8.5-11.0	12.5	32.5	2600	65	57.0	-
ADV3328	35x12.50R22LT	121	Q	F	12	15.7	BLK	8.5-11.0	12.5	34.5	3195	65	67.0	-



ARGUS ADVANTA[®]

HTR-800

LIGHT TRUCK HIGHWAY TERRAIN

- Tread pattern effectively reduces noise to create a quiet driving experience
- Large tread blocks increase the contact area, improving overall handling and tread wear
- 4 extra-wide grooves channel water to give you the traction you need to drive with confidence
- Features the latest in environmentally friendly processes and materials for improved wear and tire life
- 50,000 mile treadwear warranty

ECOSAFE[®]

ARGUS ADVANTA is a registered trademark of American Pacific Industries, Inc.



HTR-800



Part Number	Tire Size	Load Index	Speed Symbol	Load Range	Ply Rating	Tread Depth 32nds	Side-wall	Rim Width Range (in.)	Overall Width (in.)	Overall Diameter (in.)	Max Load Single/Dual (lbs.)	Tire Weight (lbs.)
HTR80005	235/75R15	105	T	STD	500 A B	11	BLK	6.0-8.0	9.25	28.86	2039	30.09
HTR80010	245/75R16	111	T	STD	500 A B	11	BLK	6.5-8.0	9.75	30.47	2403	33.42
HTR80015	265/75R16	116	T	STD	500 A B	11	BLK	7.0-9.0	10.51	31.65	2756	37.22
HTR80020	215/70R16	100	T	STD	500 A B	11	BLK	5.5-7.0	8.7	27.87	1764	26.86
HTR80025	225/70R16	103	T	STD	500 A B	11	BLK	6.0-7.5	8.98	28.43	1930	29.25
HTR80030	235/70R16	106	T	STD	500 A B	11	BLK	6.0-8.0	9.45	28.98	2094	30.49
HTR80035	245/70R16	111	T	XL	500 A B	11	BLK	6.5-8.0	9.76	29.53	2403	31.89
HTR80040	255/70R16	111	T	STD	500 A B	11	BLK	6.5-8.5	10.24	30.08	2403	34.03
HTR80045	265/70R16	112	T	STD	500 A B	11	BLK	7.0-9.0	10.71	30.63	2469	35.75
HTR80050	245/70R17	110	T	STD	500 A B	11	BLK	6.0-8.0	9.76	30.55	2337	33.65
HTR80055	265/70R17	115	T	STD	500 A B	11	BLK	7.0-9.0	10.71	31.65	2679	37.32
HTR80060	225/65R17	102	H	STD	500 A B	11	BLK	6.0-8.0	8.98	28.5	1874	27.59
HTR80065	235/65R17	104	T	STD	500 A B	11	BLK	6.5-8.5	9.45	29.06	1984	30.22
HTR80070	245/65R17	111	T	XL	500 A B	11	BLK	7.0-8.5	9.76	29.53	2403	32.12
HTR80075	265/65R17	112	S	STD	500 A B	11	BLK	7.5-8.5	10.71	30.55	2469	36.50
HTR80080	245/60R18	105	H	STD	500 A B	11	BLK	7.0-8.5	9.76	29.57	2039	31.66
HTR80085	255/65R18	111	T	STD	500 A B	11	BLK	7.0-9.0	10.24	31.06	2403	36.03
HTR80090	275/65R18	116	T	STD	500 A B	11	BLK	7.5-9.5	10.98	32.09	2756	38.99
HTR80095	275/55R20	117	T	XL	500 A B	11	BLK	7.0-9.5	11.18	31.89	2833	38.98
HTR80100	LT215/85R16	115	R	E		14	BLK	5.5-7.0	8.5	30.39	2680	38.44
HTR80105	LT235/85R16	120	R	E		14	BLK	6.0-7.5	9.25	31.73	3042/2778	41.45
HTR80110	LT225/75R16	115	R	E		14	BLK	6.0-7.0	8.78	29.29	2680/2470	36.42
HTR80115	LT245/75R16	120	R	E		14	BLK	6.5-8.0	9.76	30.47	3042/2778	41.70
HTR80120	LT265/75R16	123	S	E		14	BLK	7.0-8.0	10.51	31.65	3415/3085	45.72
HTR80125	LT245/75R17	121	S	E		14	BLK	6.5-7.5	9.76	31.5	3195/2910	43.33
HTR80130	LT235/80R17	120	R	E		14	BLK	6.0-7.5	9.25	31.81	3085/2835	42.11
HTR80135	LT265/70R17	121	S	E		14	BLK	7.0-8.5	10.71	31.65	3195/2910	45.24



30-DAY "SATISFACTION ASSURED" GUARANTEE

Argus Advanta hereby warrants every new Argus Advanta tire bearing a complete description as required by DOT and manufactured AFTER August 1, 2014 (DOT date code 3414) to be free from workmanship and material related conditions that would cause the tire to become unserviceable for the life of the original tread of a new tire less 2/32". The life of the original usable tread ends when the tire tread has worn down to 2/32" remaining, at which point the tire is considered to be fully worn out. Argus Advanta will replace tire with a new Argus Advanta tire for qualifying warranty claims. All Exclusions listed below void this replacement warranty. Conditions and coverage are subject to change at any time and without notice.

- A. The worn Argus Advanta tire must be replaced with a comparable new Argus Advanta tire by an authorized Argus Advanta dealer. Copy of invoice will be required.
- B. Replacement applies to new first quality tires only. Retreads, tires unserviceable due to Road Hazard and tires described under Exclusions below are not covered.
- C. Adjustments on ride complaints or out of round tires are excluded from this warranty if they are worn past 2/32" from the original usable tread of the new tire.
- D. Written documentation of tire rotation every 6 months or 6,000 miles is required.

30 DAY "SATISFACTION ASSURED" GUARANTEE

All Argus Advanta passenger car and light truck tires are covered by the 30 Day "Satisfaction Assured" trial period. If, for any reason, other than an excluded condition listed in the respective tire's Standard Warranty, you are not satisfied with your new set of tires within 30 days of date of purchase - or the first 2/32nds of tread wear as measured in the fastest wearing groove (whichever comes first) - you may exchange all or any one of them for the same number of the same design or similar design Advanta manufactured tires. Mounting and balancing are free of charge (excluding online orders). Owner pays all applicable taxes. If you wish to exchange for another set of Advanta manufactured tires that have a higher cost, you must pay the upgrade from the original purchase price, including shipping and all applicable taxes. If you wish to exchange for another set of tires, which is at a lower cost, you will receive a credit (excluding FET) for the difference in cost. This Satisfaction Assurance guarantee only applies to the original new set of manufactured passenger and light truck tires purchased and not to the replacement tires under this guarantee.

ADMINISTRATION OF THE ASSURED SATISFACTION GUARANTEE

Within the 30 days from the date of purchase or the first 2/32nds tread wear as measured in the fastest wearing groove, you must return your tires to the authorized Advanta brand tire dealer where you purchased your tires. You must present the original sales receipt and proof-of-purchase. Reason for dissatisfaction must be explained to the dealer (i.e., appearance, ride, handling, etc.) and noted on the adjustment claim form.

ADVANTA LIMITED MILEAGE WARRANTY

- A. If an Argus Advanta tire wears evenly down to a tread depth of 2/32 in less than the applicable mileage below and in less than five (5) years from date of manufacture, Advanta will credit the owner a prorated amount on the actual mileage toward the purchase of a new Advanta tire. Costs incurred for mounting, balancing and other service charges are not included in the credit amount and shall be borne by the owner. It is the owner's responsibility to follow the Owner's Obligations listed under the Advanta Limited Warranty. All Exclusions listed below void this Limited Mileage Warranty. Conditions and coverage are subject to change at any time and without notice.
- B. If an Advanta tire is deemed to be adjustable under the Limited Mileage Warranty, then the following procedures must be met.
 - 1. Owner/User must keep updated mileage records on the Mileage Warranty form provided the on Advanta website or at the time of purchase. Tires must be rotated at least every 6,000 miles and documented by the service provider.
 - 2. Original invoice showing purchase of tires must be submitted.
 - 3. Must complete and sign the Mileage Warranty form and submit to an authorized dealer.
 - 4. The worn Advanta tire must be replaced with a comparable new Advanta tire by an authorized dealer. Copy of invoice will be required.

EXCLUSIONS

- A. All Argus Advanta warranties are limited to the original purchaser and the original vehicle on which they are mounted, and are not assignable to subsequent purchasers or vehicles.
- B. The warranties listed above are applicable only in the United States and Canada and any tire used or equipped on a vehicle registered or operated outside the United States and Canada are not covered by these warranties.
- C. The following is not covered by the warranties listed above:
 - 1. Tire branded or marked "Non-Adjustable" (N/A) or "Blemished" (Blem), or previously adjusted.
 - 2. Failure, damage or irregular wear due to, but not limited to, the following:
 - a) fire, accident or vandalism;
 - b) mechanical condition of vehicle, including improper alignment, improper inflation, wheel imbalance, faulty shocks or brakes;
 - c) misapplication of tire; or
 - d) alteration of the tire, addition of foreign material, transfers from one vehicle to another or any previous damages and/or repairs.
 - 3. Cost of mounting and balance service.
 - 4. Loss of time or use, inconvenience, or any incidental or consequential damages except as prohibited by law.
 - 5. Adjustment on out-of-balance or out-of-round tire is allowed only during the first 2/32" of the original tread. A set of all four (4) tires from the same vehicle claimed for out-of-round will not be accepted.
- D. Any Argus Advanta tire submitted five (5) years or more from the date of manufacture as determined by the DOT Serial number is not covered under the warranties listed above.

REPAIRS AND RETREADING: RATING CHANGES AND CAUTIONS

- A. Repaired, retreaded or altered Argus Advanta tire with "Speed Rating" no longer retain their "Speed Rating".
- B. If the aforementioned tire(s) is repairable, see the recommended repair procedures used by the tire dealer(s) for repairing tubeless passenger car radial tires as detailed and illustrated in the RMA puncture repair procedures.
- C. Repairs must be restricted to the tread area of the tire and not the tire sidewalls.
- D. Do not repair tread area punctures larger than 1/4" in diameter.

OWNER'S OBLIGATIONS

- In order to be eligible for Argus Advanta Limited Warranty service, the dealer/owner must:
- A. At the time of purchase, the tires must be properly installed, correct air pressure set and the wheels balanced.
 - B. Any tire to be adjusted must be presented to an authorized Argus Advanta dealer.
 - C. Present proof of purchase to the satisfaction of the dealer.
 - D. Complete and sign an Argus Advanta Warranty Claim Form, which is available at any authorized dealer.
 - E. Pay the amount due on taxes, mounting and balancing charges or cost of other services ordered.

DISCLAIMER

This warranty, or any warranty stated or referred to herein, is exclusive and in lieu of any other warranty regarding the quality of Argus Advanta Tires, whether expressed or implied, and remedies for breach thereof shall be limited to those specifically provided herein.

TREAD PATTERN	MILES
ER-700	45,000
ATX-750	50,000
HTR-800	50,000
TRG-750	50,000
SVT-01	60,000

PLACE YOUR ORDER TODAY

24/7 Online Order
usautoforce.com

Fax
800.688.3099

ARGUS ADVANTA is a registered trademark of American Pacific Industries, Inc.
Distributed by U.S. AutoForce